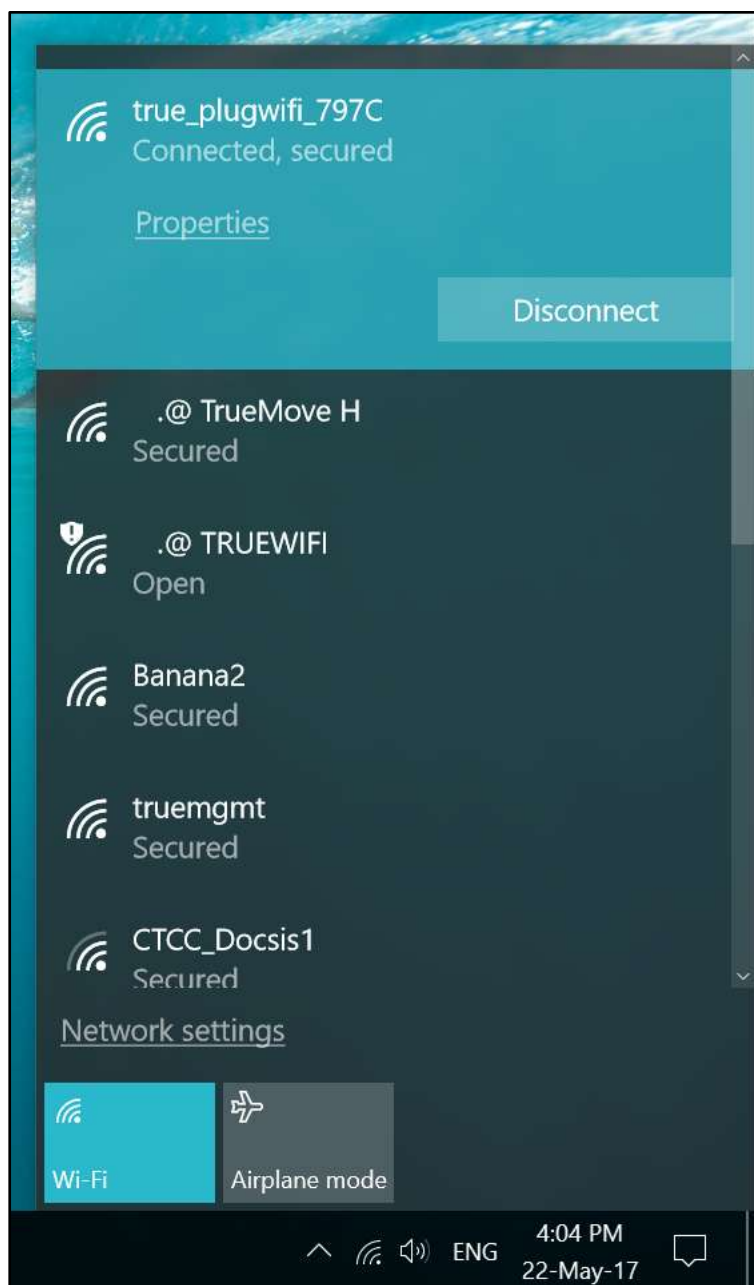


## Restore Factory settings on 4G Plug WiFi via Config page

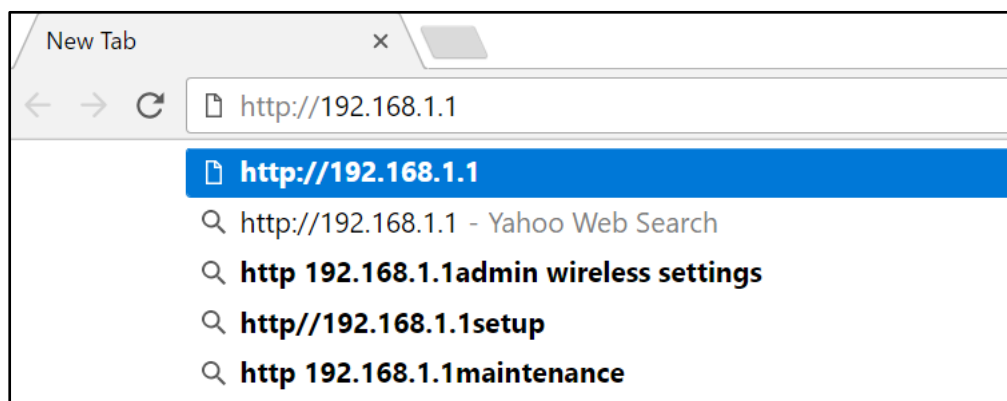
This setting is applicable to 4G Plug WiFi and TRUE Home Wireless Broadband

### 1. Connect Wi-Fi to **4G Plug WiFi**

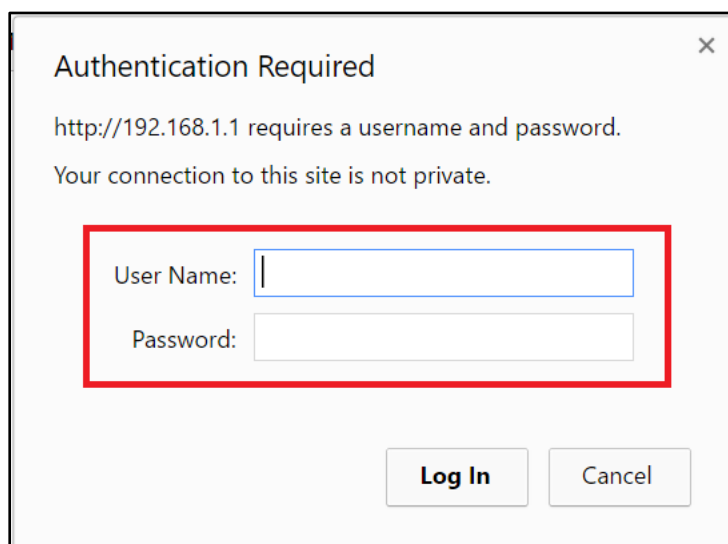
**Remarks :** Config page will display only English, no Thai language



2. At Web Browser in URL Address, type **http://192.168.1.1** and press **ENTER**



3. Authentication Required page will appear for entering **Username** and **Password**



4. Enter **Username = admin** and **Password = password** , then press **Login**

Authentication Required

http://192.168.1.1 requires a username and password.  
Your connection to this site is not private.

User Name:

Password:

5. Main page of 4G Plug WiFi will appear, **Smart Router > Access Point Status** , it will show the connection status of 4G Plug WiFi

Smart Router

- Internet Settings
- DHCP Server
- Administration
- Management
- Upload Firmware
- Settings
- Reboot Router
- Statistics
- Dail-up log

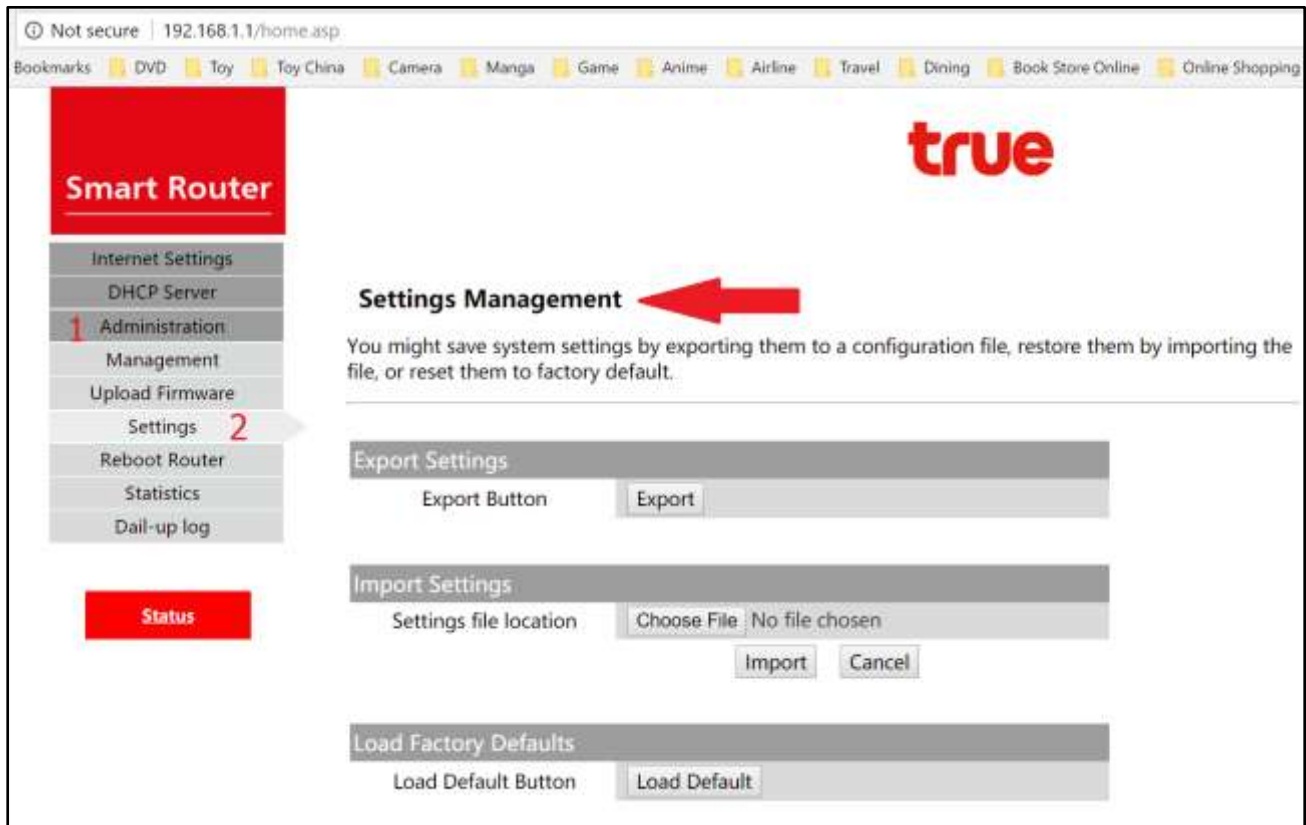
### Access Point Status

Let's take a look at the status of router.

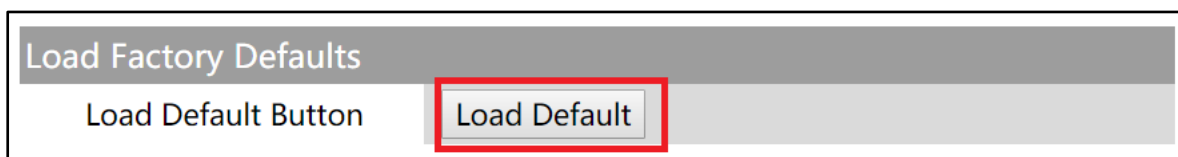
System Info	
Firmware Version	ver-4.38 Build150917 Move
Hardware Version	Spi ver 2.0
System Up Time	18 mins, 9 secs

Internet Configurations	
Connected Type	DHCP
Connect Status	Connected
Modem status	31  Network: FDD-LTE Sim card status: OK MMC MNC:52000 ESN:4G IMEI:869389011658207 ICCID:8966001015902142265
Hardware Monitor	MCU Ver: V12 Board Temp: 47 Input Voltage: 11.9V
WAN IP Address	10.138.196.219
Subnet Mask	255.255.255.255
Default Gateway	10.64.64.64

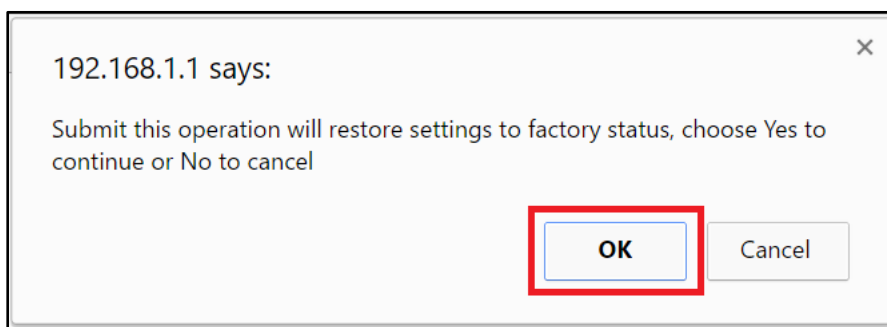
6. Tap Administration > Settings > Settings Management



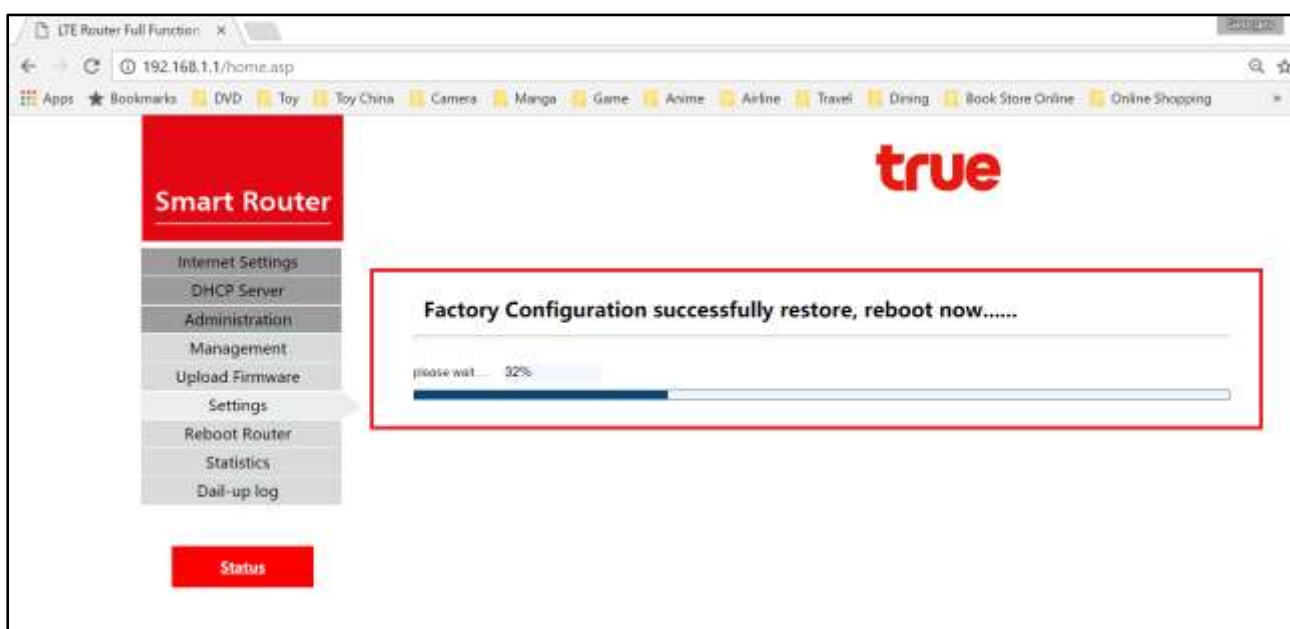
7. **Load Factory Default** : to restore to Factory Default > in case of system error or device fault or to reset all settings, it can be done by pressing **Load Default** and wait for a while for the system to proceed and need to reconnect device to 4G Plug WiFi again



8. Press **OK** to confirm



9. Page will show processing percentage, wait until 100 % then the device will reboot itself



10. While restoring, notice LED status will turn into light red, that means on process of device rebooting



11. Wait until LED turns green or blue then test using the device again

