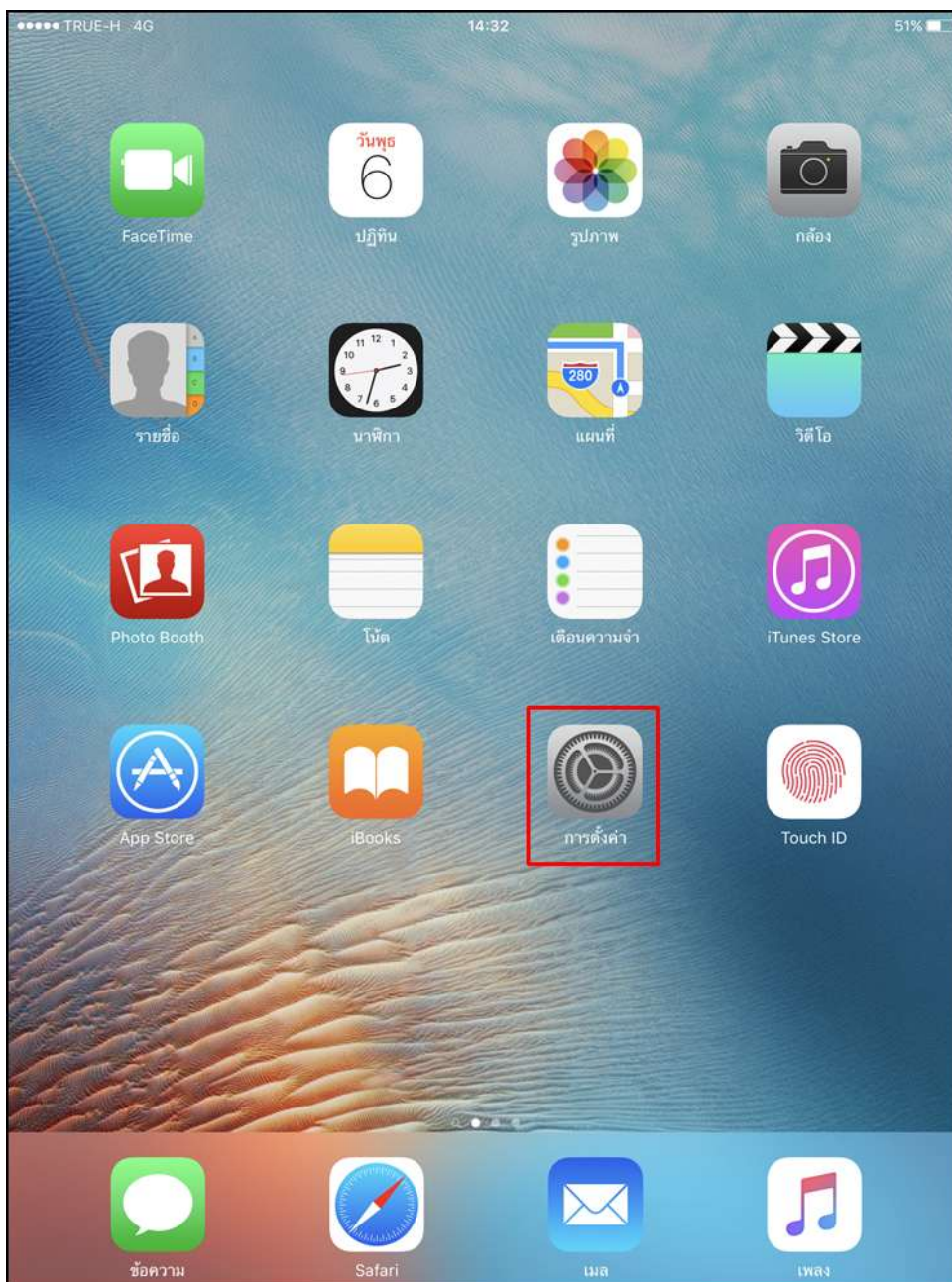


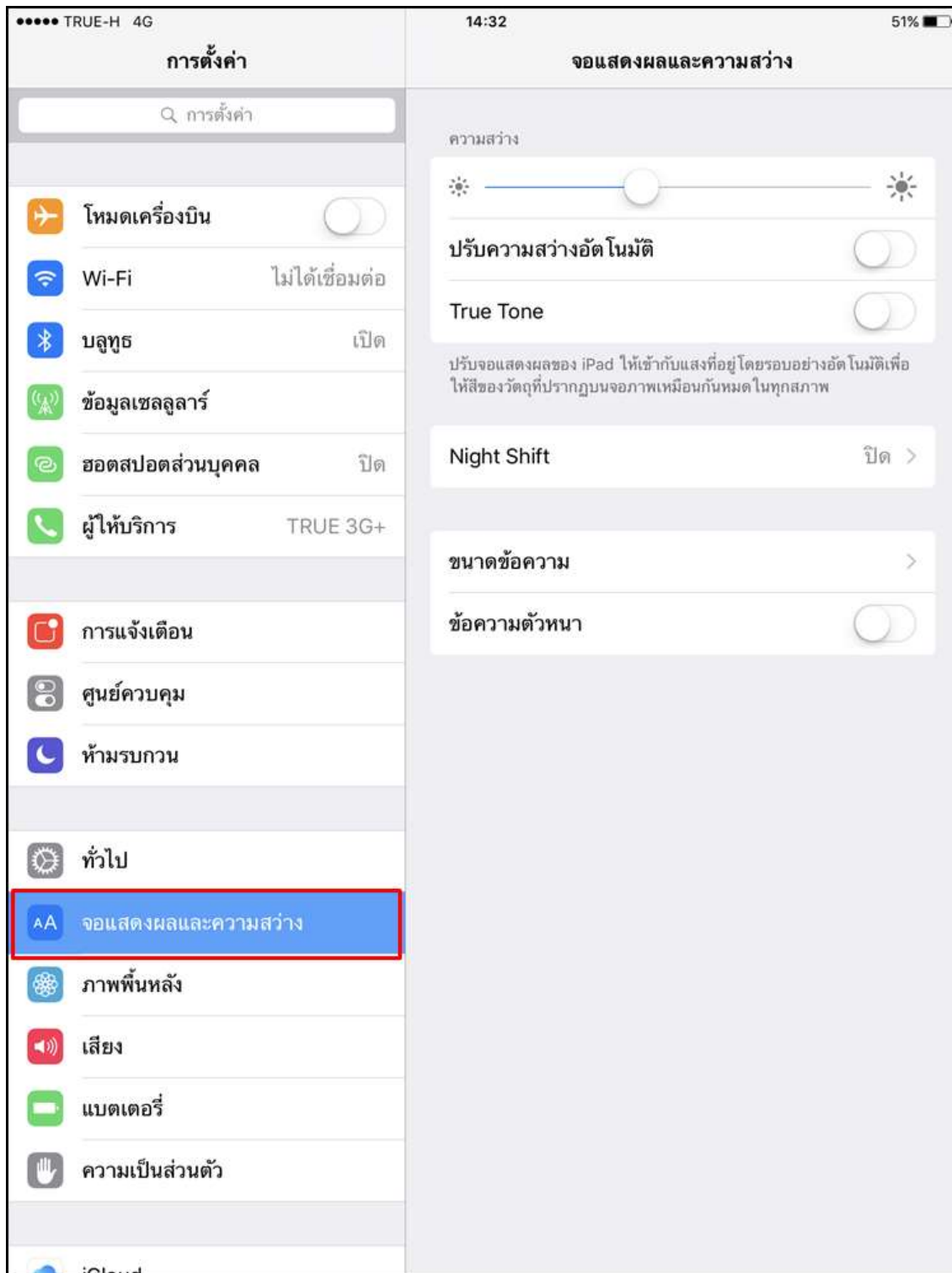
Set True Tone mode for iPad Pro 9.7

True Tone is the mode for iPad light metering according to the circumstance at that moment and adjust screen to be Warm Tone

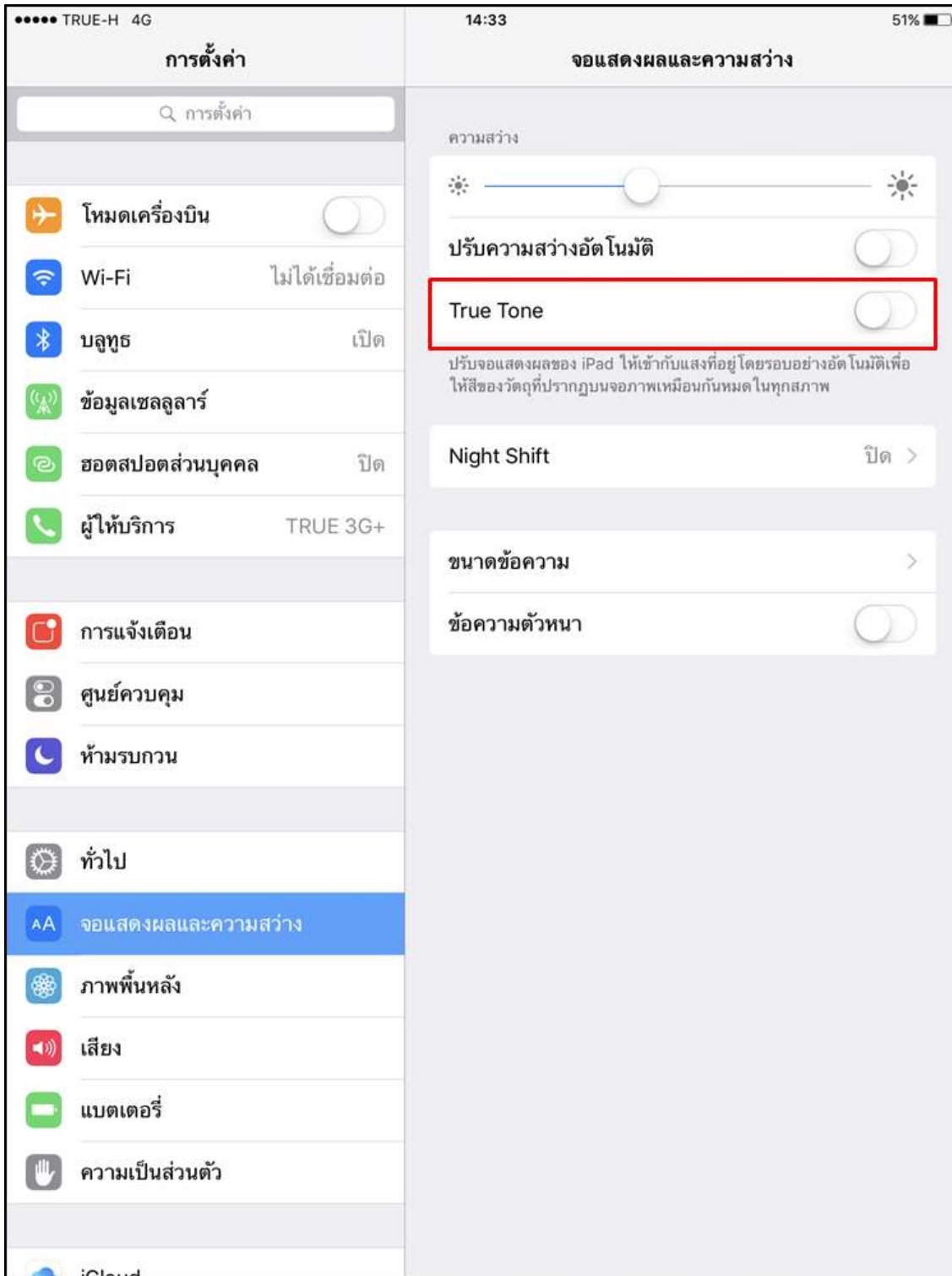
1. At Home screen, go to [Settings]



2. Select [Display and Brightness]



3. True Tone is [Off], the screen color will be white-blue tone, tap True Tone to be [On]



4. Once True Tone is On, it'll be [Warm tone], light adjustment according to the circumstance at that moment

