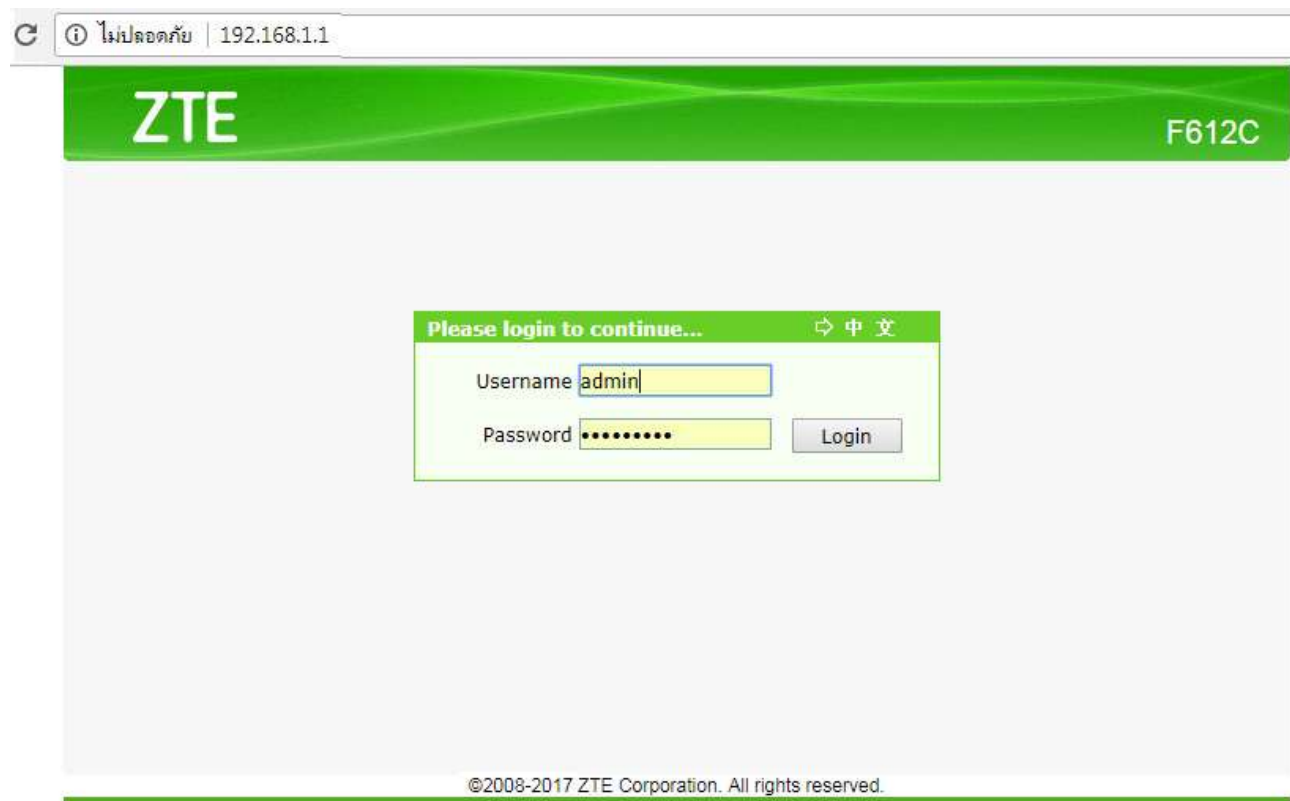


## Reboot and Restore Default Settings for ZTE F612C

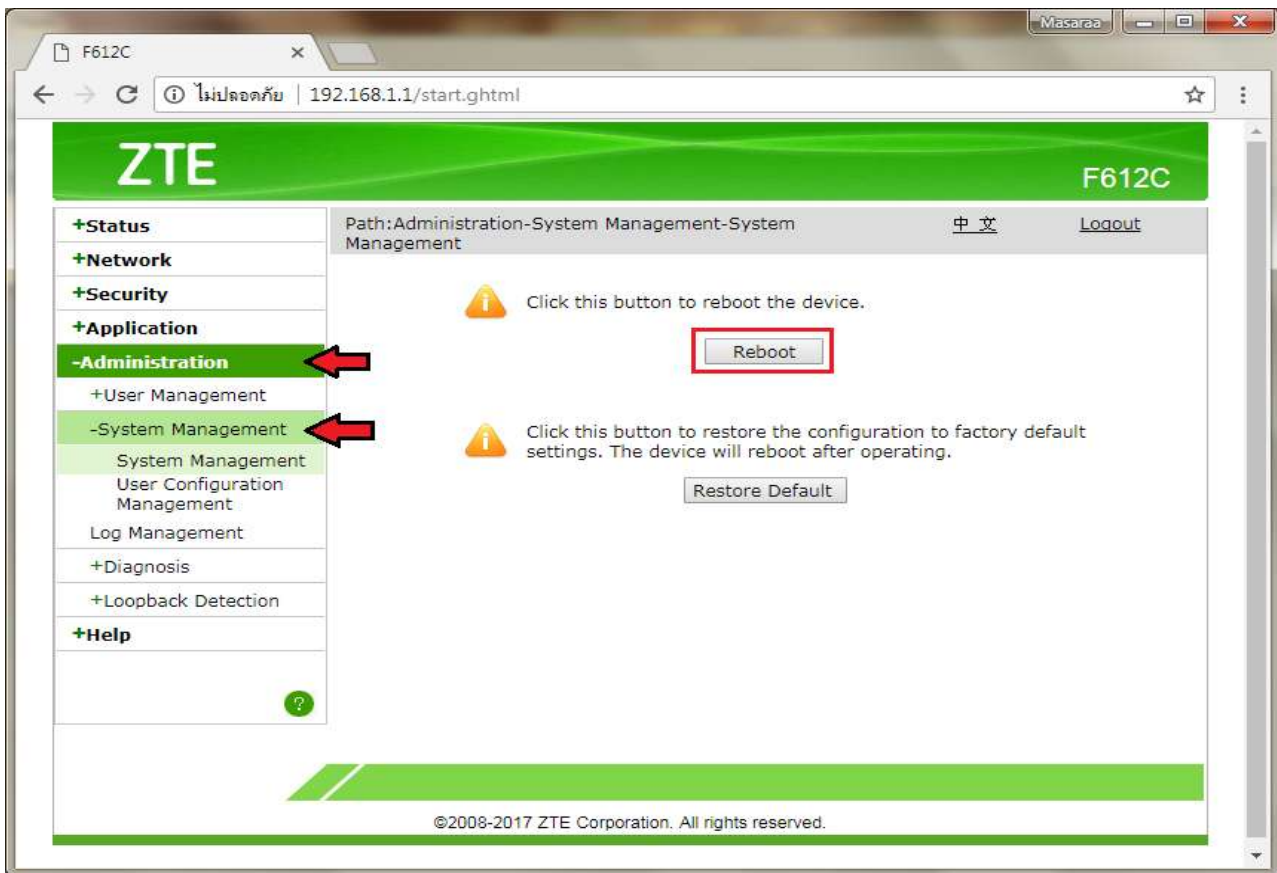
1. Open a Browser e.g. IE, Chrome and type <http://192.168.1.1> then press **Enter**

- Username = **admin**
- Password = **password**
- Press **Login**

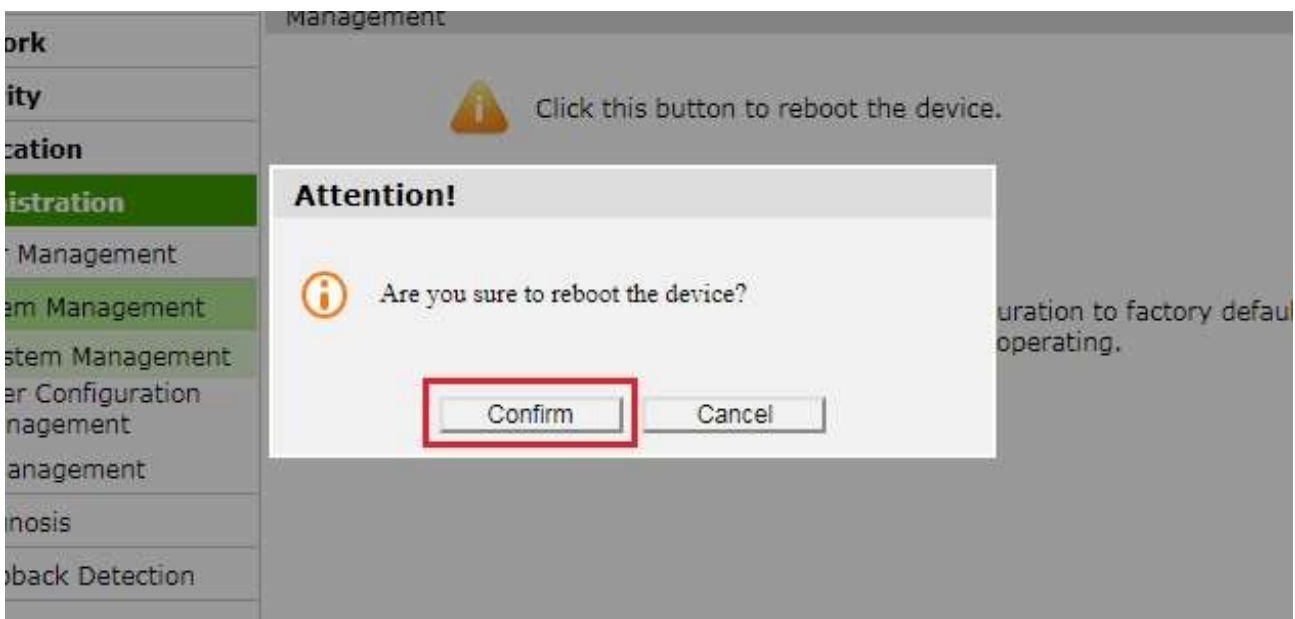


2. To Reboot (restart device) :

Go to **Administration > System Management > System Management** > press **Reboot**

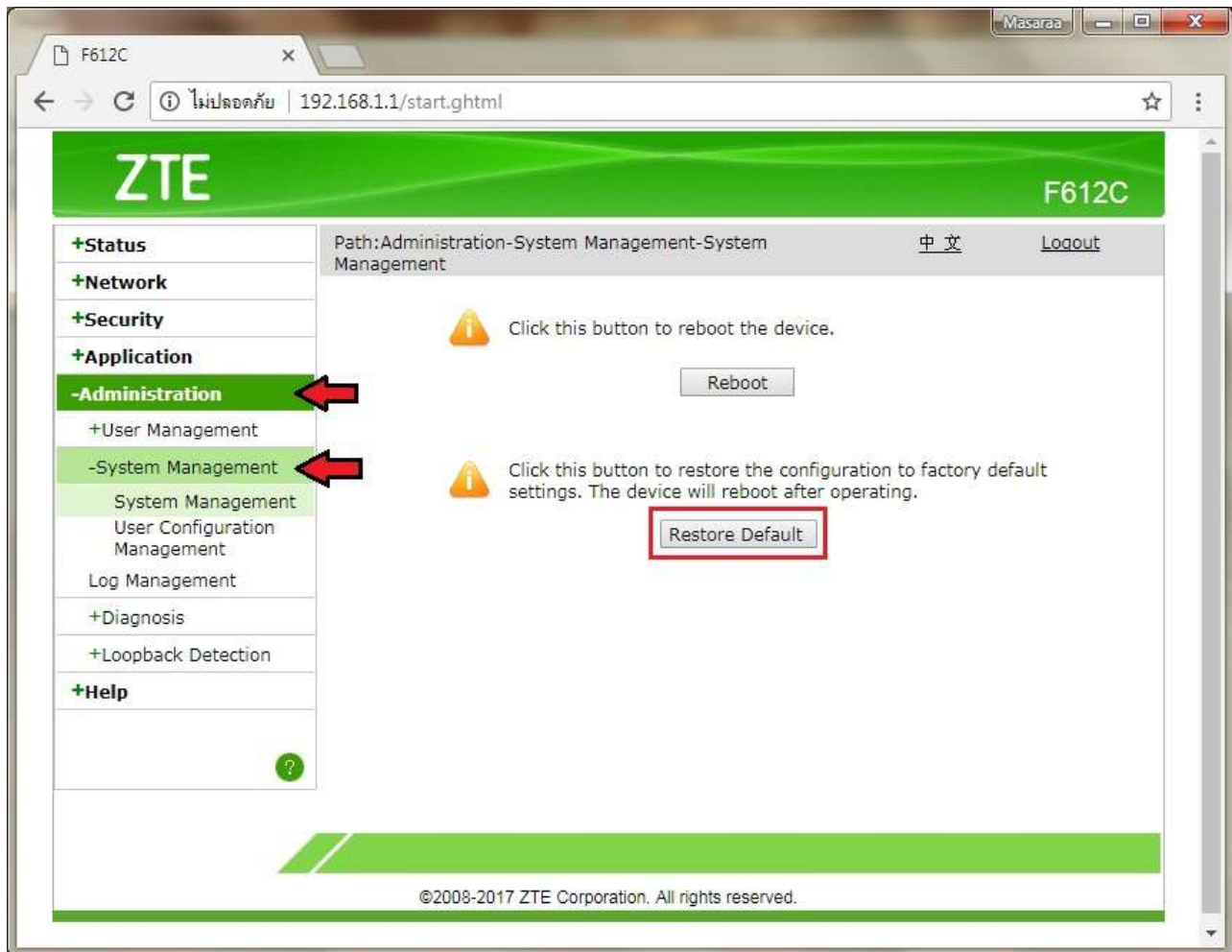


3. A pop up to confirm reboot "Are you sure to reboot the device?" > press **Confirm**



#### 4. Restore Default:

Go to **Administration > System Management > System Management > Restore Default**



#### 5. A pop up to confirm restore “Are you sure to reset settings?” > press **Confirm**

