

Set up Repeater Mode on AP Xplor RE1200R4GC-2T2R-V3

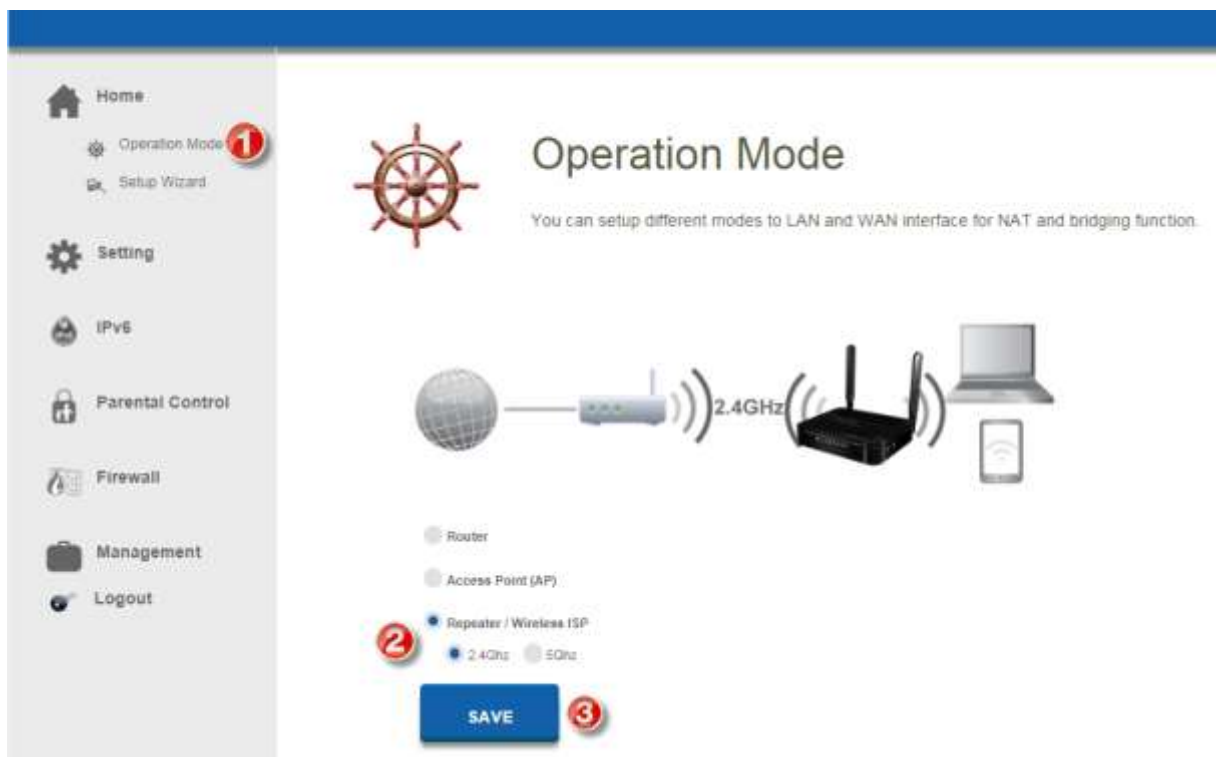
1. Type 192.168.2.1 in URL and enter User : **admin** / Password : enter letters per below picture

(if it's not clear, click at picture, it'll change style but always the same letters)

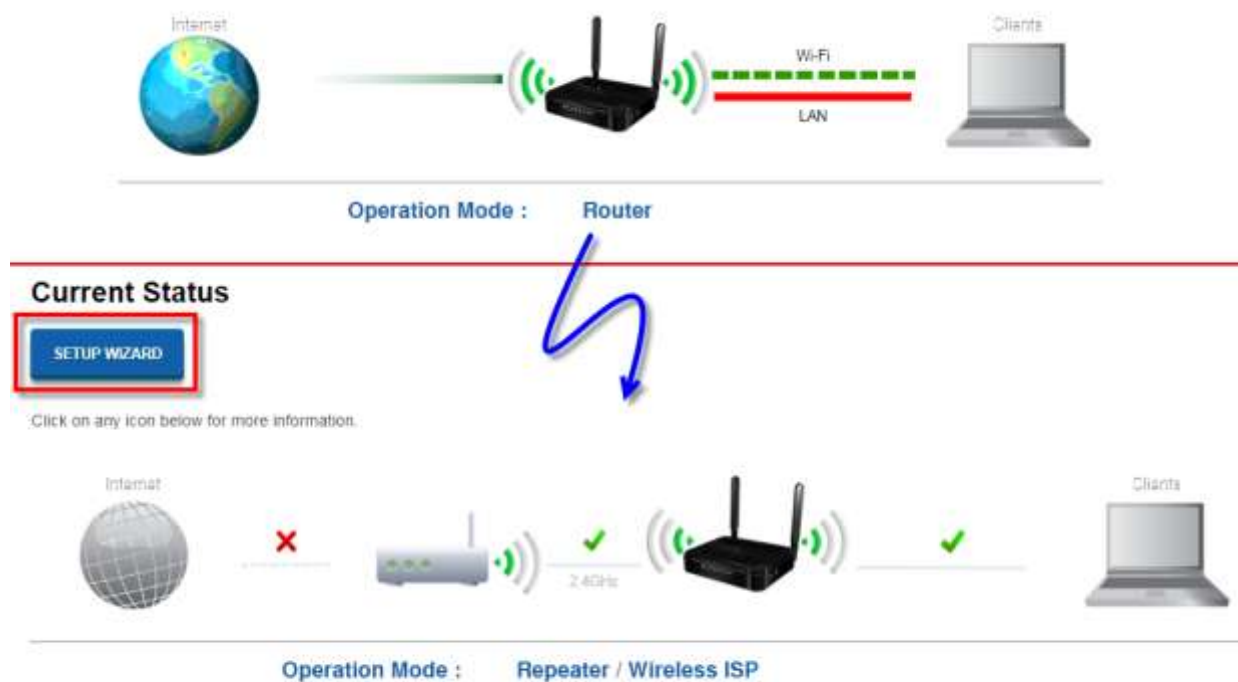


2. Operating Mode

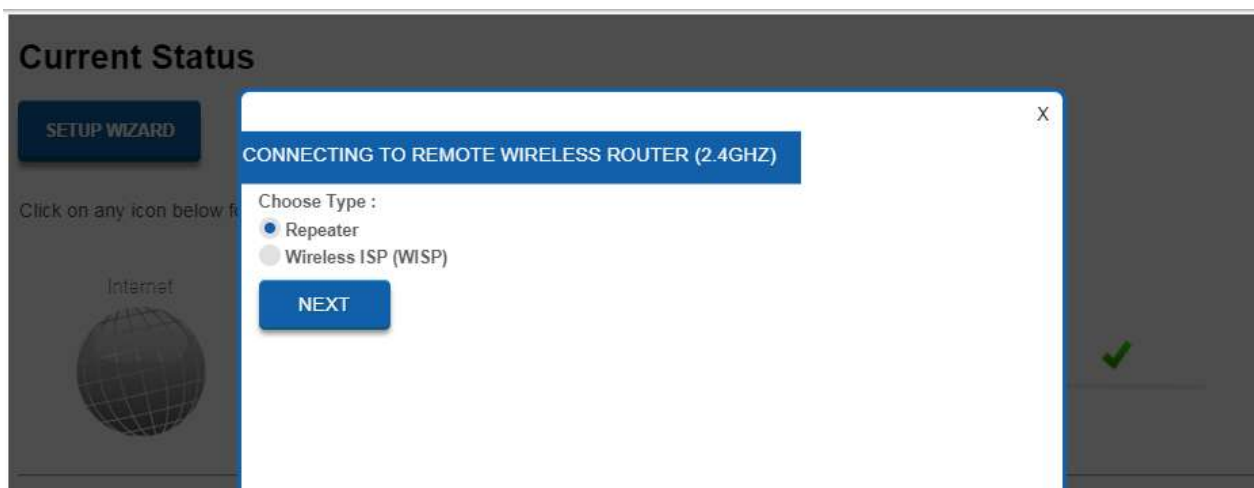
- Home > Operating Mode
- Repeater / Wireless ISP : choose Repeater between 2.4Ghz or 5Ghz
- Press SAVE , device will Reboot



- Back to **Current Status** : Mode will be changed from Router to **Repeater** / **Wireless ISP** > press **SETUP WIZARD**



- Choose **Repeater** > **NEXT**



5. Enter network name and password then press **NEXT**

Current Status

SETUP WIZARD

Click on any icon below to find available wireless router.

Internet

ENTER LOCAL WIRELESS NETWORK NAME AND SECURITY KEY (5GHZ)

5GHz Wireless Network Name (SSID) :
true_home5G_c97 (Maximum 32 characters)

5GHz Wireless Security Key :
5jzwhj8i (Minimum 8 characters)

COPY SAME SSID AND PASSWORD TO 2.4GHZ

2.4GHz Wireless Network Name (SSID) :
true_home2G_c97 (Maximum 32 characters)

2.4GHz Wireless Security Key :
5jzwhj8i (Minimum 8 characters)

Click **Next** to find available wireless router.

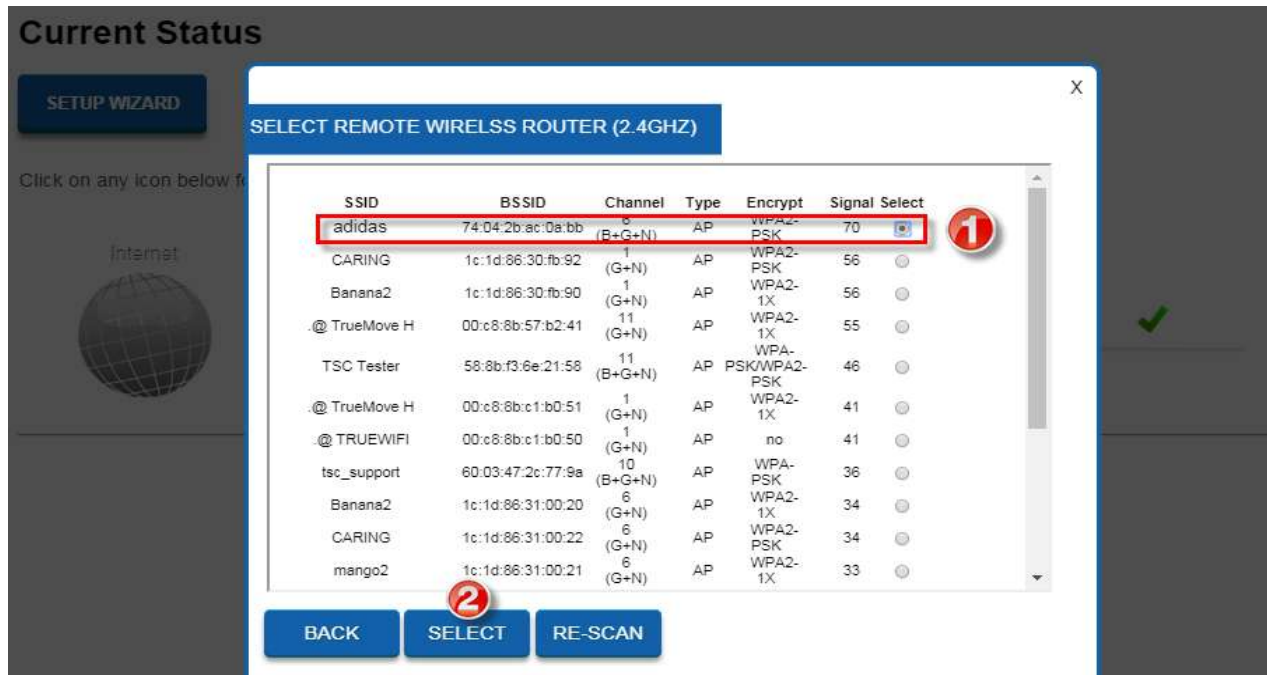
BACK **NEXT**

6. Rebooting...

Rebooting...



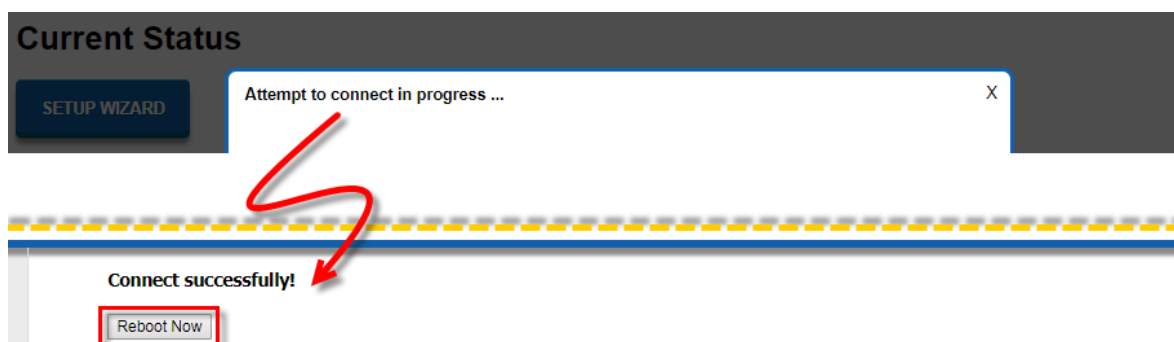
7. Search for main Router's network and select that Router then press **SELECT**



8. Connect to main Router and enter the password of main Router then press **CONNECT**



9. AP is connecting if it shows "Connect successfully!", press **Reboot Now**



10. Check whether set up Repeater Mode is completed

1. Current Status : **Home**

- Operation Mode = Repeater / Wireless ISP
- LAN > DHCP = Disabled (Client will obtain IP Address from main Router)
- Repeater = show network information of main Router, Status = Connected

Current Status

Click on any icon below for more information.

Internet 2.4GHz Clients

Operation Mode : **Repeater / Wireless ISP**

LAN

MAC Address : 94-45-96-20-3c-97
 IP Address : 192.168.2.1
 Subnet Mask : 255.255.255.0
 Default Gateway : 0.0.0.0
 DHCP Server : Disabled

Wireless

Wi-Fi Network Name (5GHz) : true_home5G_c97
 Wireless Mode : 5 GHz (AAHAAC)
 Channel : Auto
 Security Type : WPA2 Mixed
 Security Key : Spw4j8i
 BSSID : 94-45-96-20-3c-96

Wi-Fi Network Name (2.4GHz) : true_home2G_c97
 Wireless Mode : 2.4 GHz (B4-G-N)
 Channel : Auto
 Security Type : WPA2 Mixed
 Security Key : Spw4j8i
 BSSID : 94-45-96-20-3c-96

Repeater

Wi-Fi Network Name (2.4GHz) : uiddas
 BSSID : 74-04-2b-ac-0a3b
 Radio Frequency : 2.4GHz
 Status : Connected
 Link Rate : MCS15 144.5 Mbps
 Signal Strength : 67
 Signal Quality : Perfect

2. **Network** : Setting > Network > DHCP Server = OFF (DHCP is off to allow Client get IP Address from main Router)

Home

Setting 1

Wireless 5G

Wireless 2.4G

Network 2

IPv6

Management

Logout

Network

This page is to configure the network settings for your device. You can enter a name for your router in the Device Access link field, and use the link to access these configuration pages in a web browser.

Network Settings

Device Access Link:

IP Address:

Subnet Mask:

Default Gateway:

[DHCP Server](#) [Dynamic DNS](#)

DHCP Server

DHCP Server: **OFF** 3

Client Range: - [SHOW CLIENT LIST](#)

Lease Time: minutes

Static Leases: [SETUP](#)

[SAVE AND REBOOT LATER](#) [SAVE AND REBOOT NOW](#)