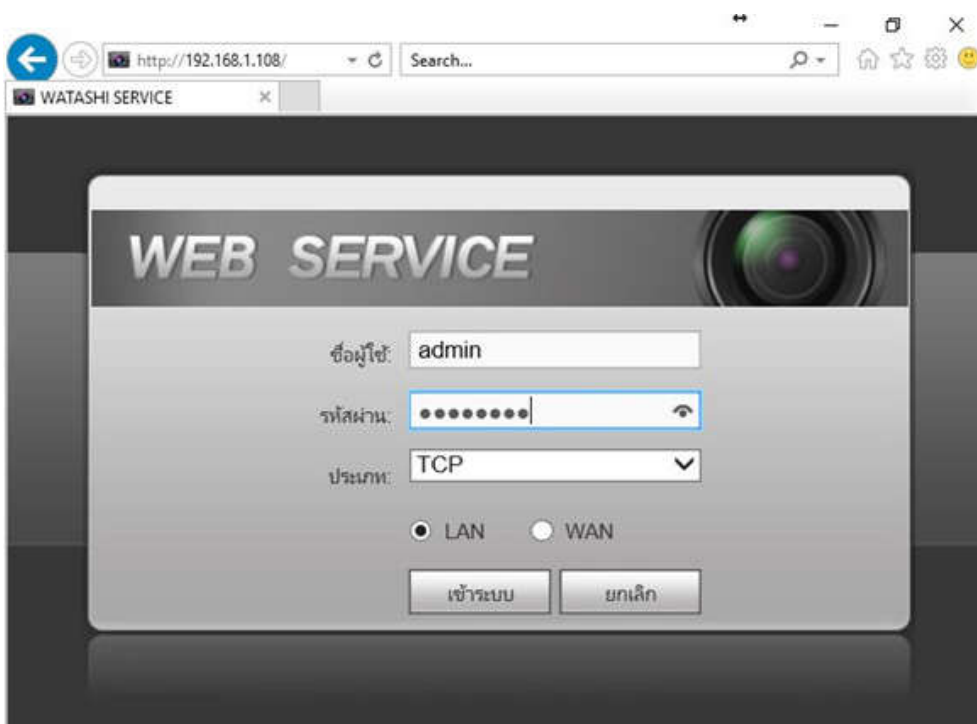


Set up HUAWEI HG8247W5 to use True DDNS with CCTV

Check IP Address and Port of CCTV to set Port Forwarding at Router

1. Check the settings at DVR that used to record video from all cameras in house (example: Watashi CCTV)
 - Type IP Address of DVR at the Browser ex: 192.168.1.108 then press Enter
 - You'll find a Login page to enter DVR's username and password and press login
 - If do not know IP Address, username and password of DVR, ask the technician who installed DVR



2. To check IP Address , select Setting > Network > TCP/IP > DVR

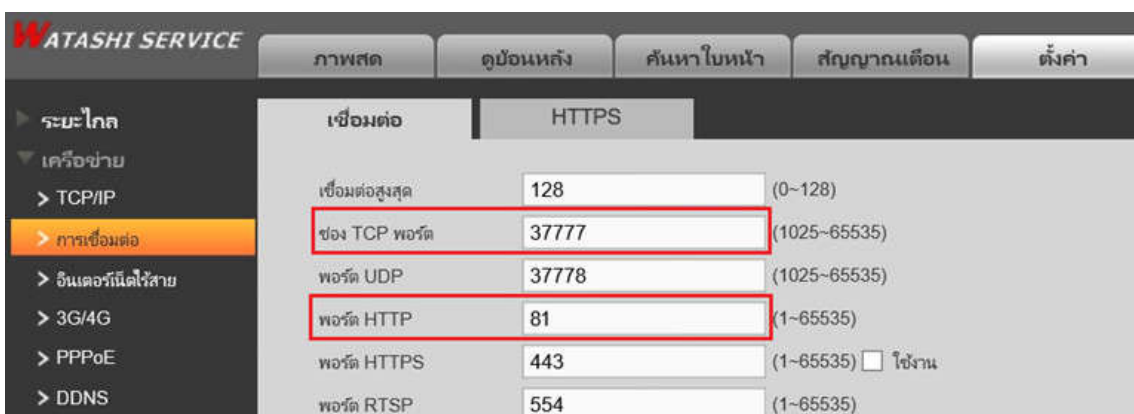
IP Address : 192.168.1.108



3. To check Port, select Setting > Network > Connection : most used

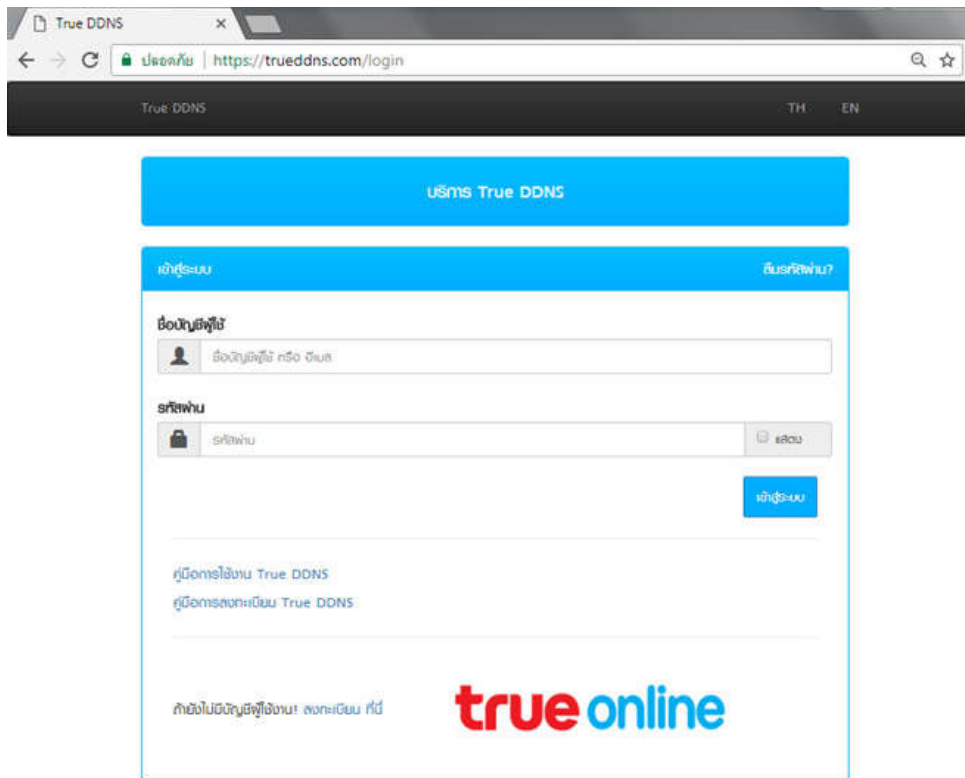
Port is

- TCP Port : 37777 (Port for watching camera via Application on Smart Phone)
- HTTP Port : 81 (Port for watching camera through Web Browser)



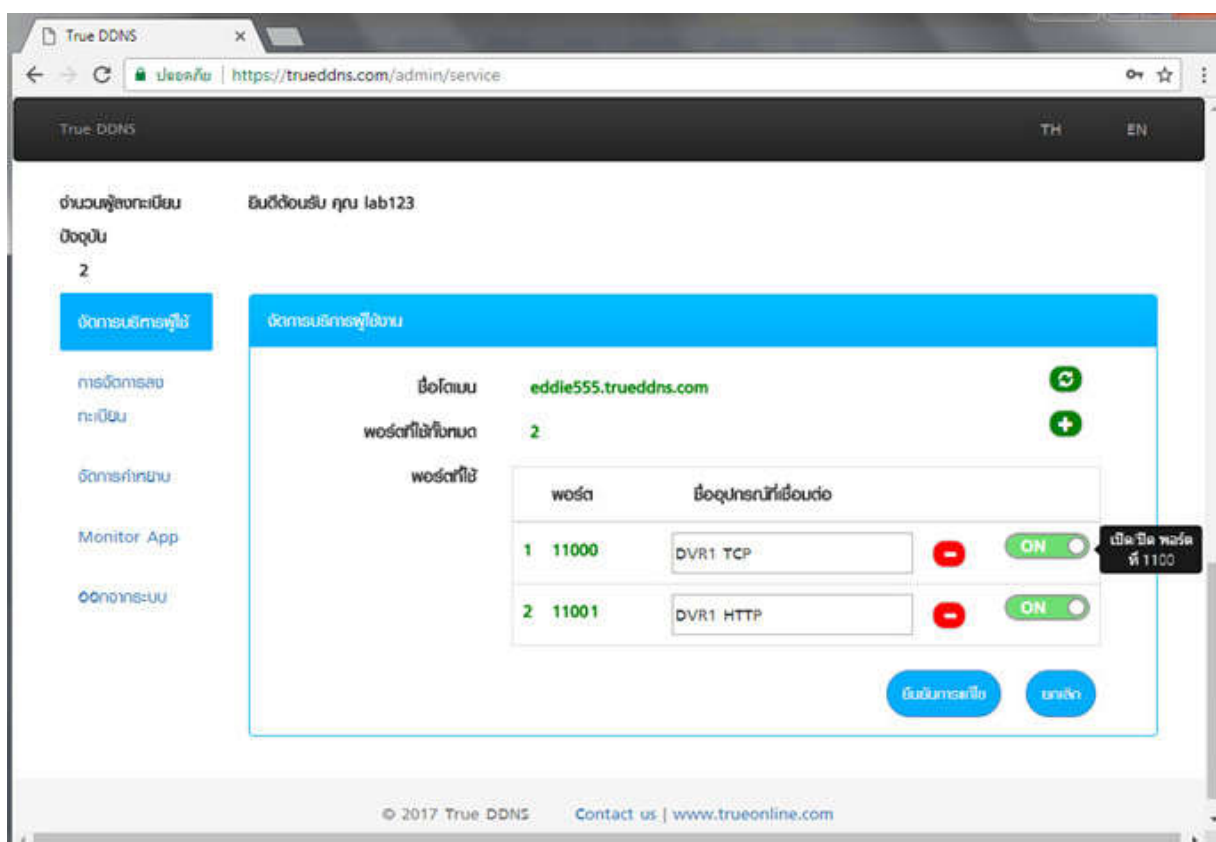
Set up TrueDDNS

1. Type <https://trueddns.com/login> at Web Browser then press Enter
> Login by using registered username and password and press login



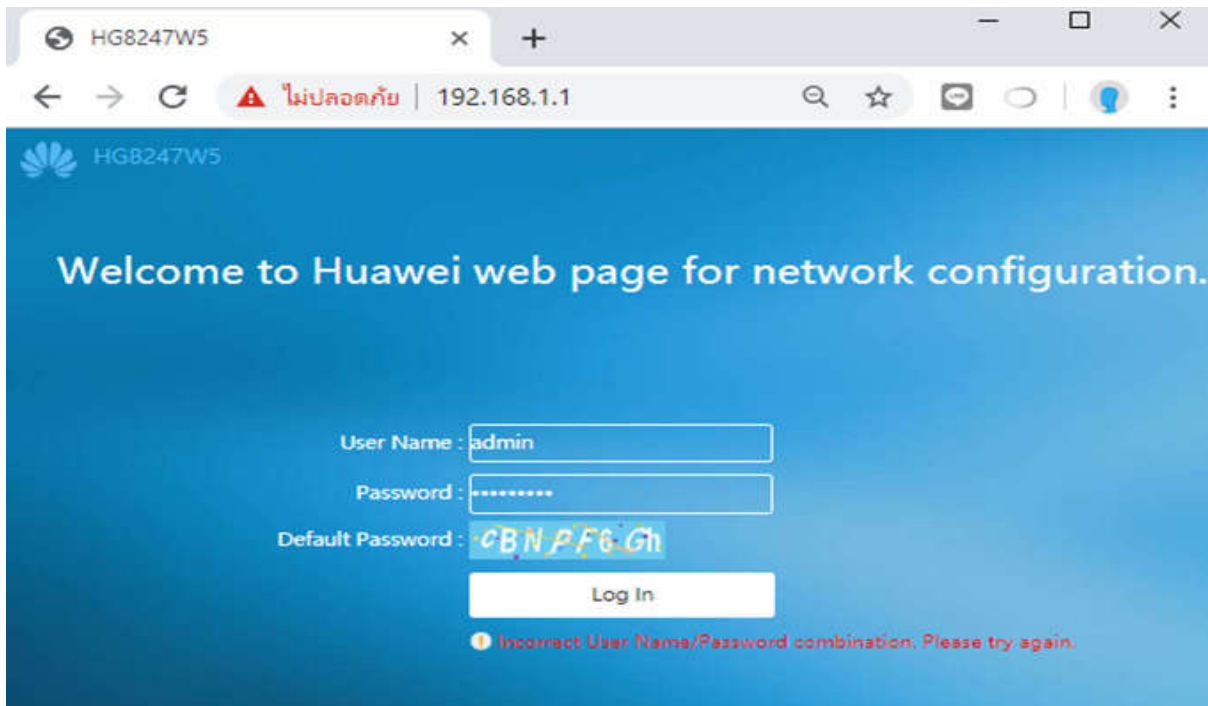
2. Select Service Management, pairing Port to align with DVR

- Port 11000 : enter TCP to align with TCP Port of DVR , click a behind button to turn it ON
- Port 11001 : enter HTTP to align with HTTP Port of DVR , click a behind button to turn it ON
- Press Confirm

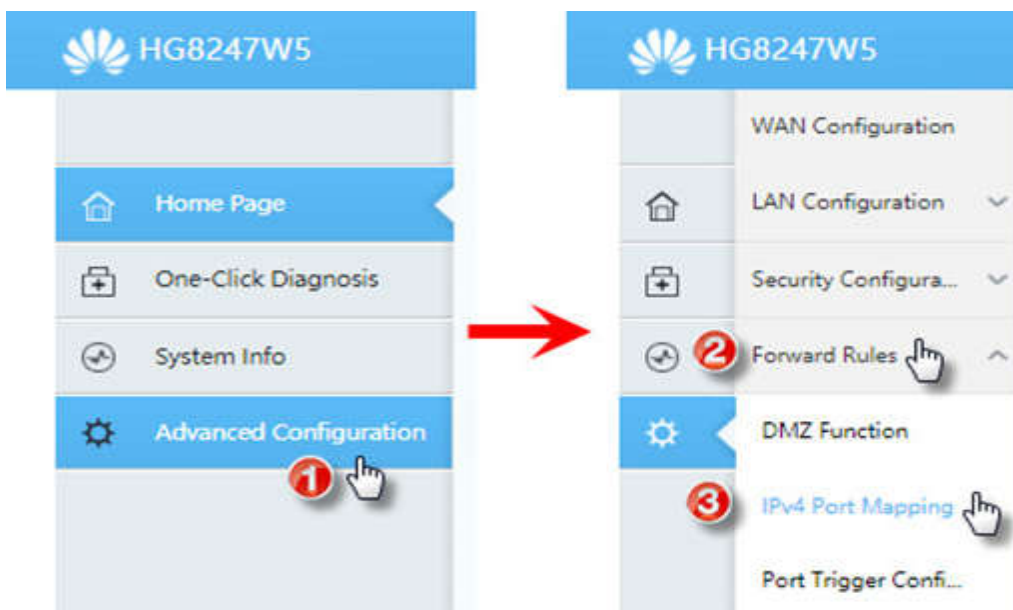


Port Forwarding at Router

1. Type 192.168.1.1 , Username = admin / Password = password that has been set at first setting > press Login



2. Advanced Configuration > Forward Rules > IPv4 Port Mapping



3. Go to Port Forwarding Virtual Server

- Press New
- Type : User-Defined
- Enable Port Mapping : click a check to enable
- Mapping Name : name this Profile to know the use of Port Forwarding
e.g. 'DVR' stands for Port Forwarding to DVR
- Internal Host : enter IP Address of device received from Router e.g. DVR
received IP 192.168.1.108 then enter this IP
- When finished, press Apply
- Press Add 2 times to set 2 Ports

4. Set up 2 ports as follows:

- Protocol : select per use, if do not sure, choose TCP/UDP
- Internal port number : enter Port number of device to forward Port
- External port number : enter Port number of device to forward Port (if using True DDNS, enter Port number received from True DDNS)
- When finished, press Apply

Mapping Name	WAN Name	Internal Host	External Host	Enable
<input type="checkbox"/> DVR1 TCP	1_TR069_INTERNET_R_VID_100	192.168.1.108	--	Enable

Type: User-defined Application

Application:

Enable Port Mapping:

Mapping Name:

WAN Name:

Internal Host:

External Source IP Address: --

Protocol: **1** **2** Internal port number: -- *

External port number: -- External source port number: --

3

Protocol: **1** **2** Internal port number: -- *

External port number: -- External source port number: --

3

4

5. After setting, setup parameters will be shown in a table (number of Port Forwarding will depend on using device that may be 1 port or more)

Mapping Name	WAN Name	Internal Host	External Host	Enable
DVR1 TCP	1_TR069_INTERNET_R_VID_100	192.168.1.108	--	Enable

Type: User-defined Application

Application:

Enable Port Mapping:

Mapping Name:

WAN Name:

Internal Host:

External Source IP Address: --

Protocol: Internal port number: --

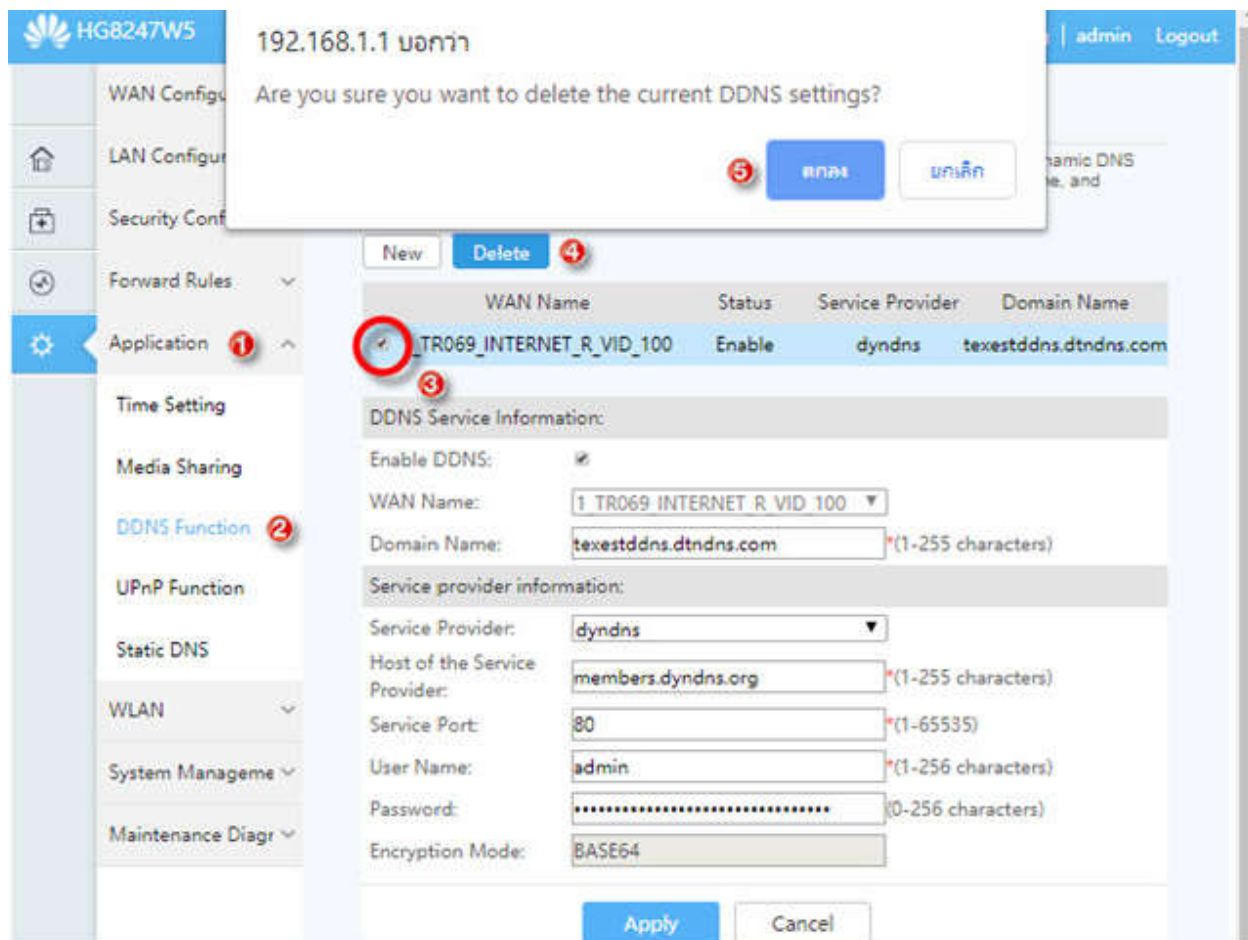
External port number: -- External source port number: --

Protocol: Internal port number: --

External port number: -- External source port number: --

Close DDNS setting at Router

1. Go to Application
2. Select DDNS Function
3. Click a check in front of Profile you want to delete
4. Press Delete
5. A pop up to confirm, press OK



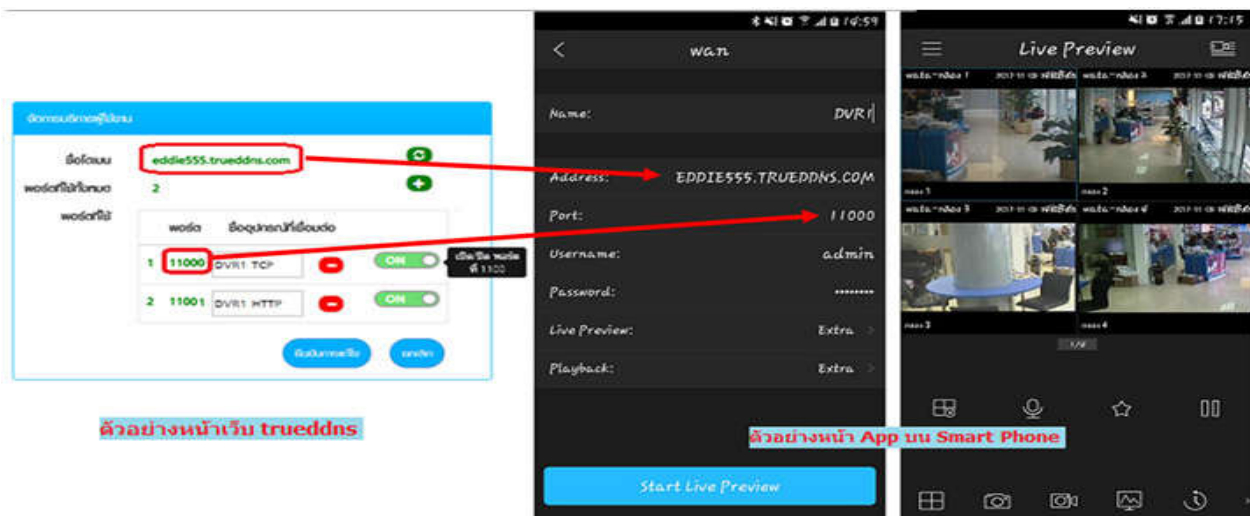
Close DDNS setting at DVR

1. Go to Setting > DDNS
2. Remove a check then press Save



Test using through Mobile Internet or Internet that's different from at home

Test using Camera App on Smart Phone by Domain created and port from True DDNS, if the setting is correct, you can see pictures from camera



Test using through Web : enter Domain name follow by Port numbers from True DDNS e.g. eddie555.trueddns.com:11001 , if the setting is correct, you can access camera's Web page

