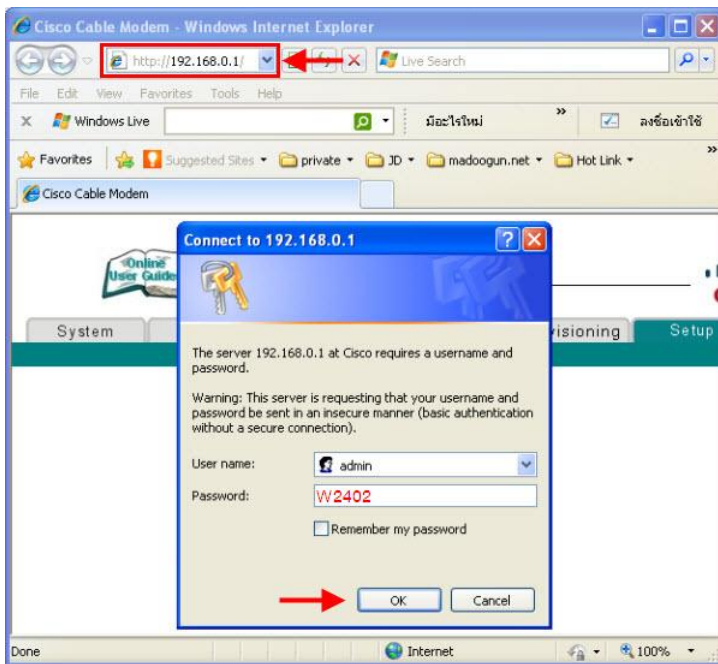


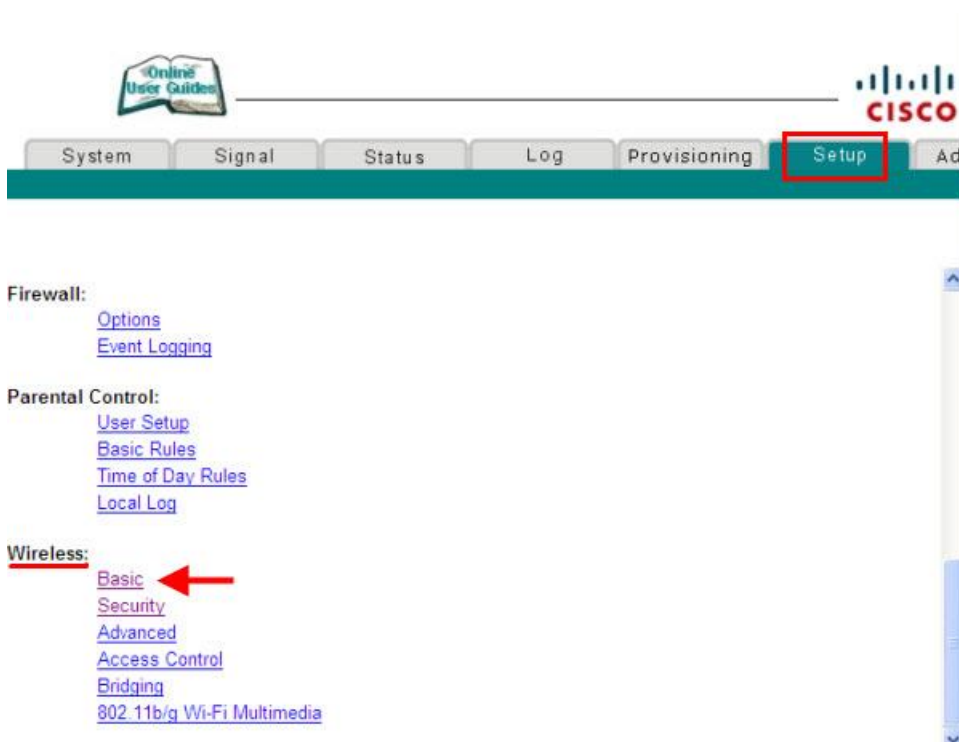
How to set up Wireless Security on Cable Modem Cisco EPC2325

1. Open a Browser and type <http://192.168.0.1> in the address bar. Enter admin for Username and W2402 for Password. The “W” must be upper casing then click OK.

Note: if typing <http://192.168.0.1> doesn't work, try entering 192.168.1.1 and using “admin” for Username and “password” for password



2. Click Setup > Wireless > Basic



3. Check the followings parameters;

3.1 Access Point > to turn on Wireless select Enable

3.2 Service Set Identifier (SSID) > Wireless name

3.3 Click Apply to save it

Online User Guides

System Signal Status Log Provisioning Setup Adv

Wireless - Basic
This page allows you to configure your wireless access point parameters, including SSID and channel number.

Access Point	Enabled
Service Set Identifier (SSID)	Cisco_D2
Basic Service Set Identifier (BSSID)	70:71:BC:14:FC:AB
Network Type	Open
Country	Worldwide (US)
New Channel	1
Channel Width	Standard - 20 MHz Channel
Current Channel	1
Encryption Mode	No Encryption

Apply Back

4. Click Setup then security at Wireless

Online User Guides

System Signal Status Log Provisioning Setup Adv

Firewall:
[Options](#)
[Event Logging](#)

Parental Control:
[User Setup](#)
[Basic Rules](#)
[Time of Day Rules](#)
[Local Log](#)

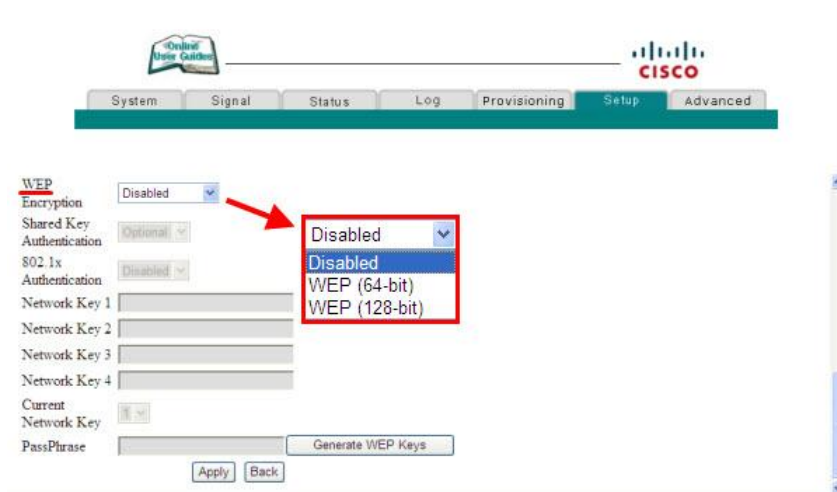
Wireless:
[Basic](#)
[Security](#)
[Advanced](#)
[Access Control](#)
[Bridging](#)
[802.11b/g Wi-Fi Multimedia](#)

WEP

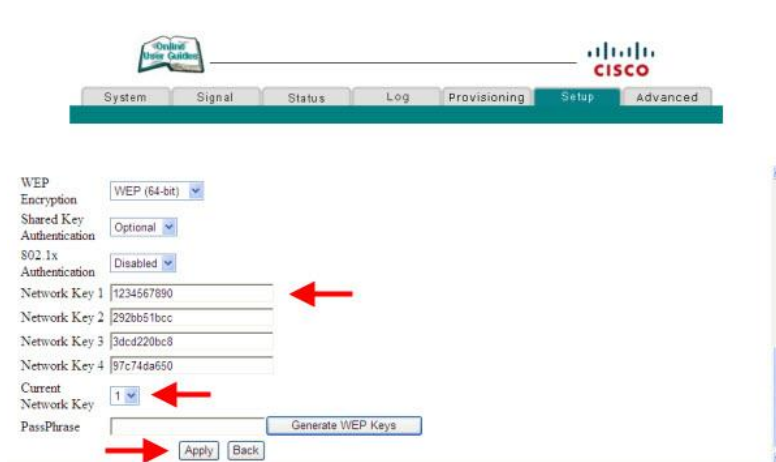
5. Go down to WEP and set the following parameters

5.1 WEP Encryption > select your desired Security; WEP (64-bit) or WEP (128-bit)

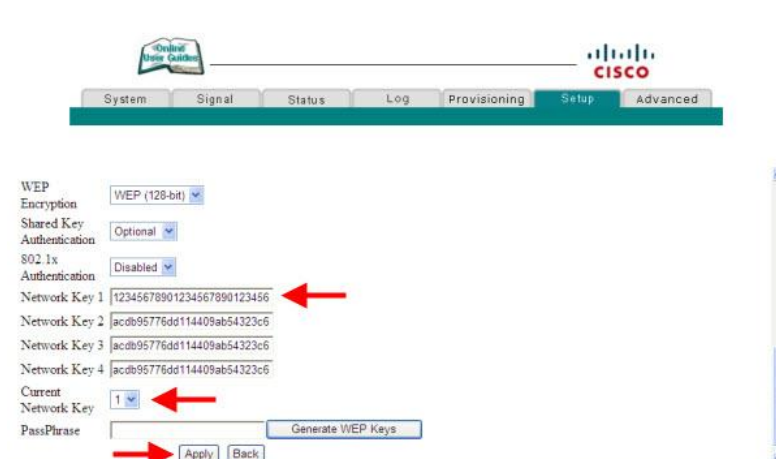
5.2 If any parameter has been changed, click apply to save it



WEP (64-bit)

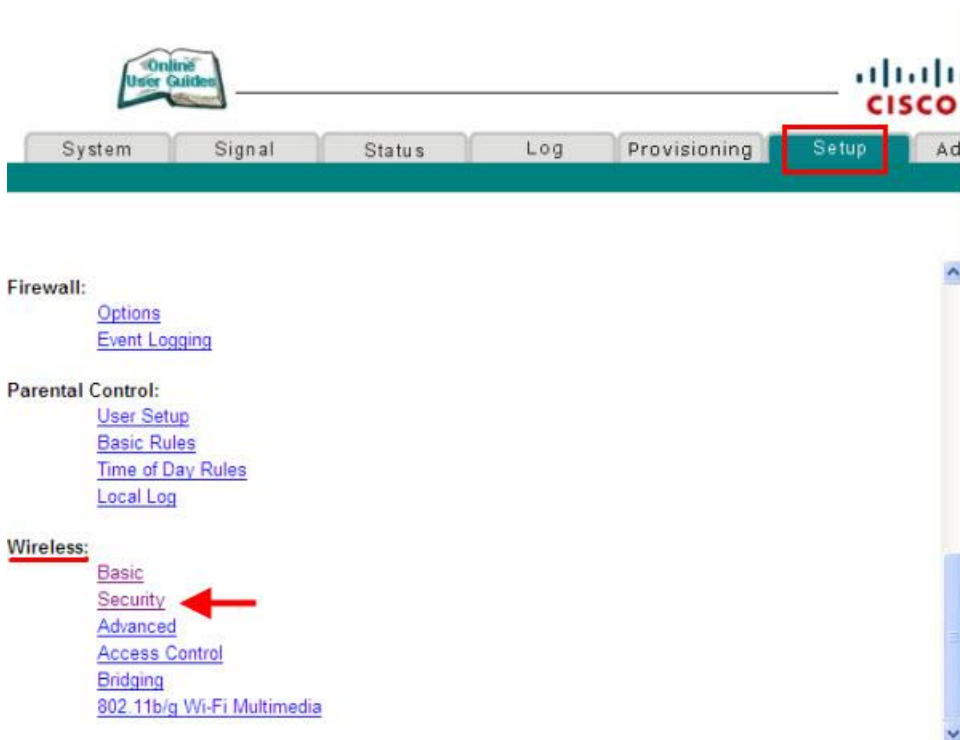


WEP (128-bit)



WPA

6. Go to Setup > Wireless > Security



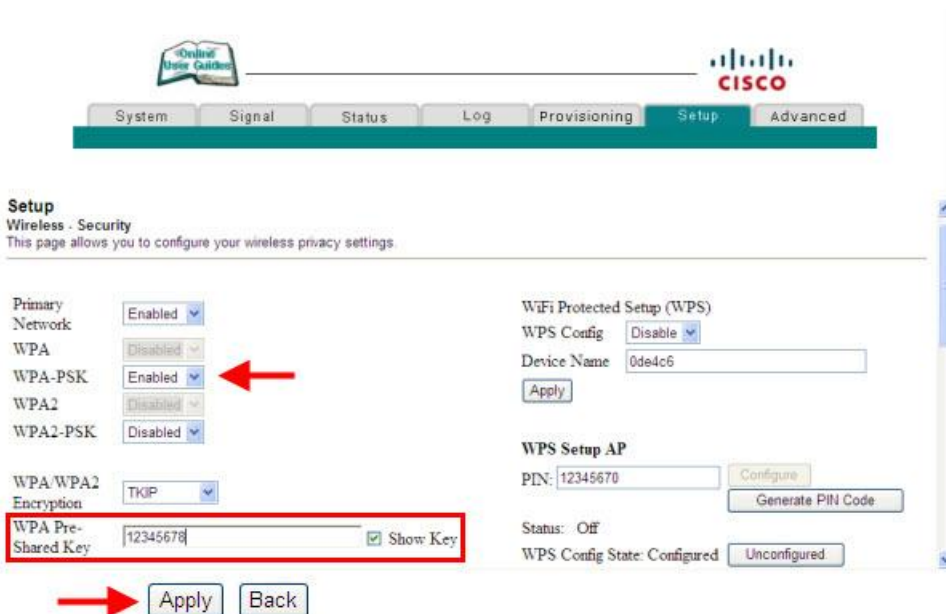
7. Go down to WPA-PSK and set the following parameters

7.1 Select Disable for WEP Encryption first

7.2 Select Enable for WPA-PSK

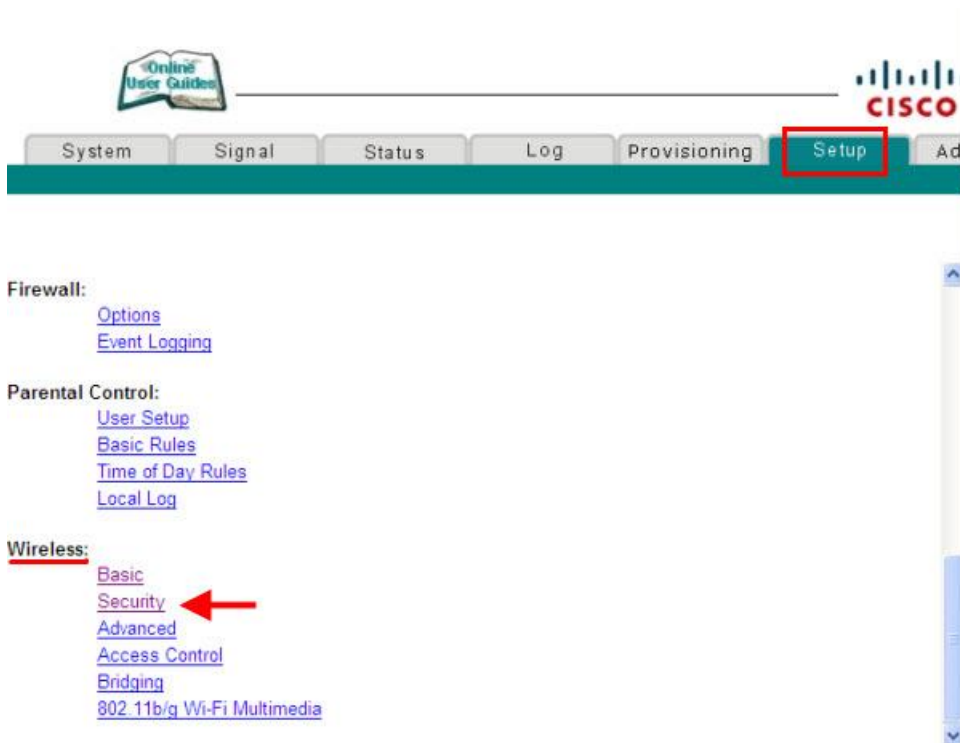
7.3 Enter a Wireless password at WPA Pre-Share Key

7.4 Click Apply to save it



WPA2

8. Click Setup then Security at Wireless



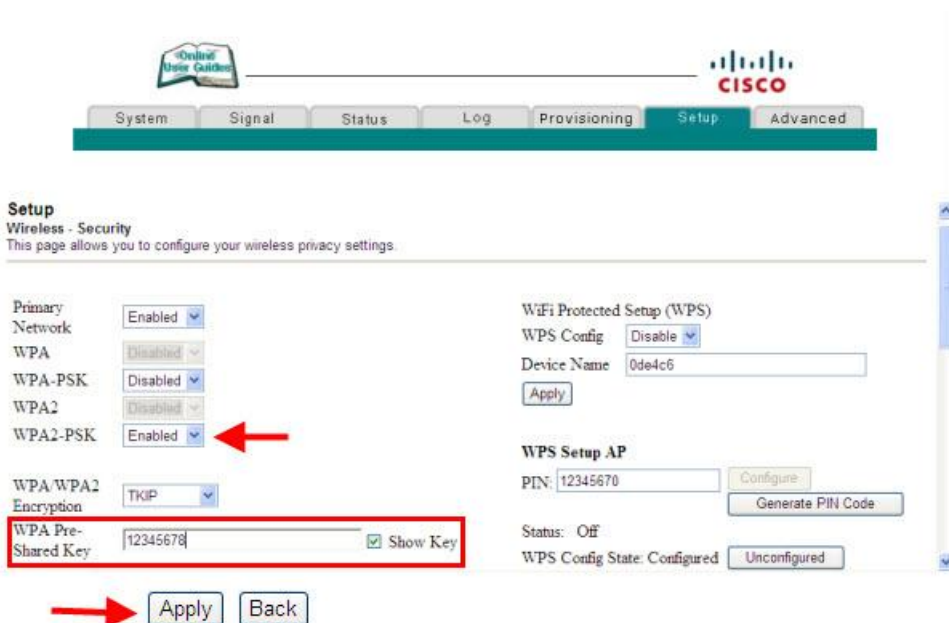
9. Go down to WPA2-PSK and set the following parameters

9.1 Select Disable for WEP Encryption and WPA-PSK first

9.2 Select Enable for WPA2-PSK

9.3 Enter a Wireless password at WPA Pre-Share Key

9.4 Click Apply to save it



true