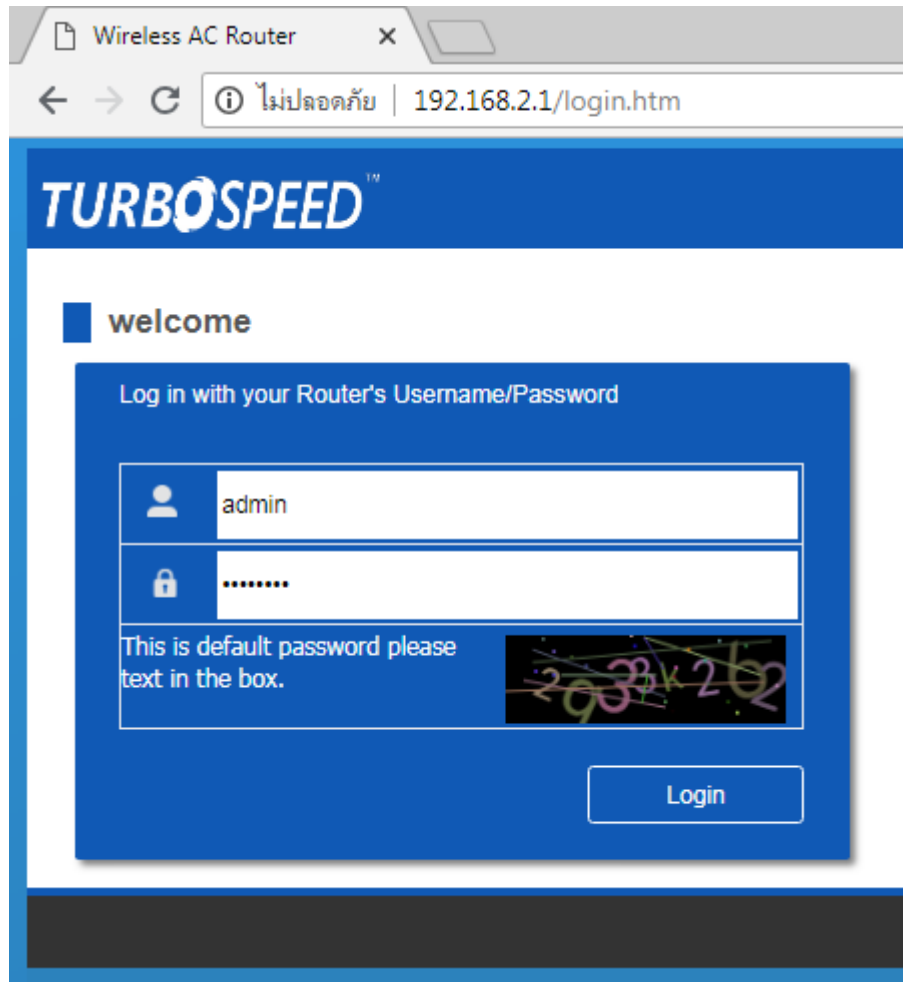


Set up Wireless on AP TurboSpeed WR6221-T

1. Type 192.168.2.1 in URL, enter User = **admin** / Password = **as per below picture** (if it's not clear, click at picture again, its style will be changed but always the same code)



- **Wireless Quick Setup**

after Logging in, you'll find Quick Setup that you can set up Wireless

- **2.4G SSID / 5G SSID** : Wireless name of 2.4G and 5G band
- **Security** : if don't want to enter the password, choose Disable, if want to, choose Enable
- **Password** : contain 8 characters up (Default is WPA2-PSK), you can click at eye symbol to view the password

TURBOSPEED English Advanced

Quick Setup

Internet

Internet Connection Type

Dynamic IP
 Static IP
 PPPoE

MAC Clone :

Wireless

Wireless Setup

2.4G SSID :	<input type="text" value="true_home2G_C82"/>	
Security :	<input type="radio"/> Disable <input checked="" type="radio"/> Enable	
Password :	<input type="password" value="*****"/>	<input type="text" value="F92Z5BDQ"/> 👁️
(Please enter 8-63 characters.)		
5G SSID :	<input type="text" value="true_home5G_C82"/>	
Security :	<input type="radio"/> Disable <input checked="" type="radio"/> Enable	
Password :	<input type="password" value="*****"/>	👁️
(Please enter 8-63 characters.)		

Save

2. Set up Wireless : **Advanced**

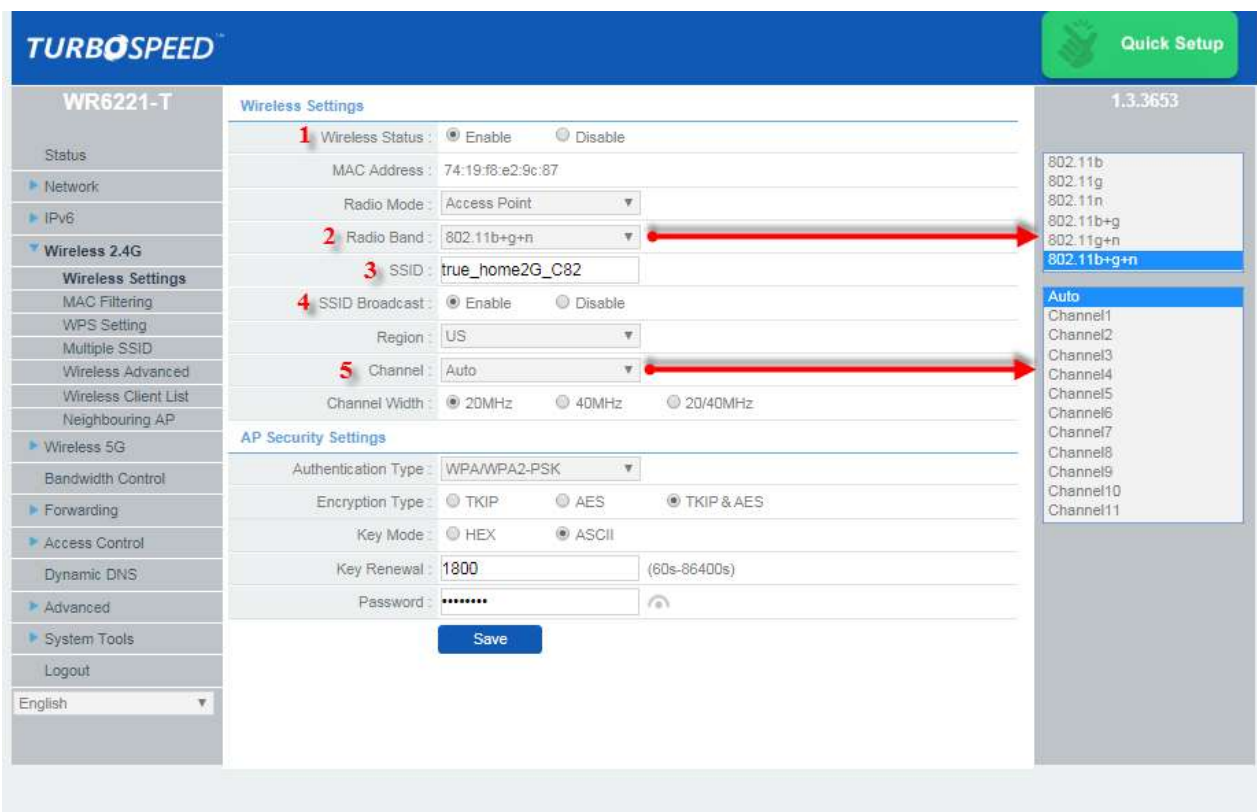
2.1. after Logging in, click **Advanced** at top right



2.2. **Wireless 2.4G**: go to Wireless 2.4G and set up as follows:

2.2.1. **Wireless Settings**

- Wireless Status : choose Enable or Disable
- Radio Band : choose as per supporting device
- SSID : enter Wireless name
- SSID Broadcast : choose Disable when want to hide Wireless name (if Disable is chosen, WPS will not work), if don't want to hide, choose Enable
- Channel: default is Auto. When AP is turned off-on, it will scan for the best channel



2.2.2. AP Security Settings > Authentication Type > choose the preferred type

- WPA-PSK / WPA2-PSK / WPA/WPA2-PSK
- Password contains 8 characters up
- Press Save

AP Security Settings

Authentication Type :	WPA/WPA2-PSK ▼		
Encryption Type :	<input type="radio"/> TKIP	<input checked="" type="radio"/> AES	<input type="radio"/> TKIP & AES
Key Mode :	<input type="radio"/> HEX	<input checked="" type="radio"/> ASCII	
Key Renewal :	1800	(60s-86400s)	
Password :		

Save

- None
- When don't want to have Wireless password, choose None
- Press Save

AP Security Settings

Authentication Type :	None ▼
-----------------------	--------

Save

- WEP
- Key Length : 64bits , Key Mode : ASCII : password contains 5 characters (a-f, A-F , 0-9)
- Key Length : 64bits , Key Mode : HEX : password contains 10 characters (a-f, A-F , 0-9)
- Key Length : 128bits , Key Mode : ASCII : password contains 13 characters (a-f, A-F , 0-9)
- Key Length : 128bits , Key Mode : HEX : password contains 26 characters (a-f, A-F , 0-9)
- Press Save

AP Security Settings

Authentication Type :	WEP ▼
-----------------------	-------

When WPS is enabled, it's not recommended to set WEP as Authentication Type.

Key Length :	<input checked="" type="radio"/> 64bits	<input type="radio"/> 128bits
Key Mode :	<input type="radio"/> HEX	<input checked="" type="radio"/> ASCII
Password :		

Save

2.3. Wireless 5G: go to Wireless 5G set up as follows:

2.3.1. Wireless Settings

- Wireless Status : choose Enable or Disable
- Radio Band : choose as per supporting device
- SSID : enter Wireless name
- SSID Broadcast : choose Disable when want to hide Wireless name (if Disable is chosen, WPS will not work), if don't want to hide, choose Enable
- Channel: default is Auto. When AP is turned off-on, it will scan for the best channel

TURBOSPEED™ Quick Setup

WR6221-T 1.3.3653

Wireless Settings

1 Wireless Status : Enable Disable

MAC Address : 74:19:f8:e2:9c:82

Radio Mode : Access Point

2 Radio Band : 802.11a+n+ac

3 SSID : true_home5G_C82

4 SSID Broadcast : Enable Disable

DFS Setting : Without DFS

5 Channel : Auto

Channel Width : 20MHz 40MHz 80MHz

AP Security Settings

Authentication Type : WPA/WPA2-PSK

Encryption Type : TKIP AES TKIP & AES

Key Mode : HEX ASCII

Key Renewal : 1800 (60s-86400s)

Password : *****

Save

802.11a
802.11n
802.11a+n
802.11ac
802.11n+ac
802.11a+n+ac
Auto
Channel36
Channel40
Channel44
Channel48
Channel149
Channel153
Channel157
Channel161

2.3.2. AP Security Settings > Authentication Type > choose the preferred type

- WPA-PSK / WPA2-PSK / WPA/WPA2-PSK
- Password contains 8 characters up
- Press Save

AP Security Settings

Authentication Type :	WPAWPA2-PSK ▼		
Encryption Type :	<input type="radio"/> TKIP	<input checked="" type="radio"/> AES	<input type="radio"/> TKIP & AES
Key Mode :	<input type="radio"/> HEX	<input checked="" type="radio"/> ASCII	
Key Renewal :	1800	(60s-86400s)	
Password :		

Save

- None
- When don't want to have Wireless password, choose None
- Press Save

AP Security Settings

Authentication Type :	None ▼
-----------------------	--------

Save

- WEP
- Key Length : 64bits , Key Mode : ASCII : password contains 5 characters (a-f, A-F , 0-9)
- Key Length : 64bits , Key Mode : HEX : password contains 10 characters (a-f, A-F , 0-9)
- Key Length : 128bits , Key Mode : ASCII : password contains 13 characters (a-f, A-F , 0-9)
- Key Length : 128bits , Key Mode : HEX : password contains 26 characters (a-f, A-F , 0-9)
- Press Save

AP Security Settings

Authentication Type :	WEP ▼
-----------------------	-------

When WPS is enabled, it's not recommended to set WEP as Authentication Type.

Key Length :	<input checked="" type="radio"/> 64bits	<input type="radio"/> 128bits
Key Mode :	<input type="radio"/> HEX	<input checked="" type="radio"/> ASCII
Password :		

Save