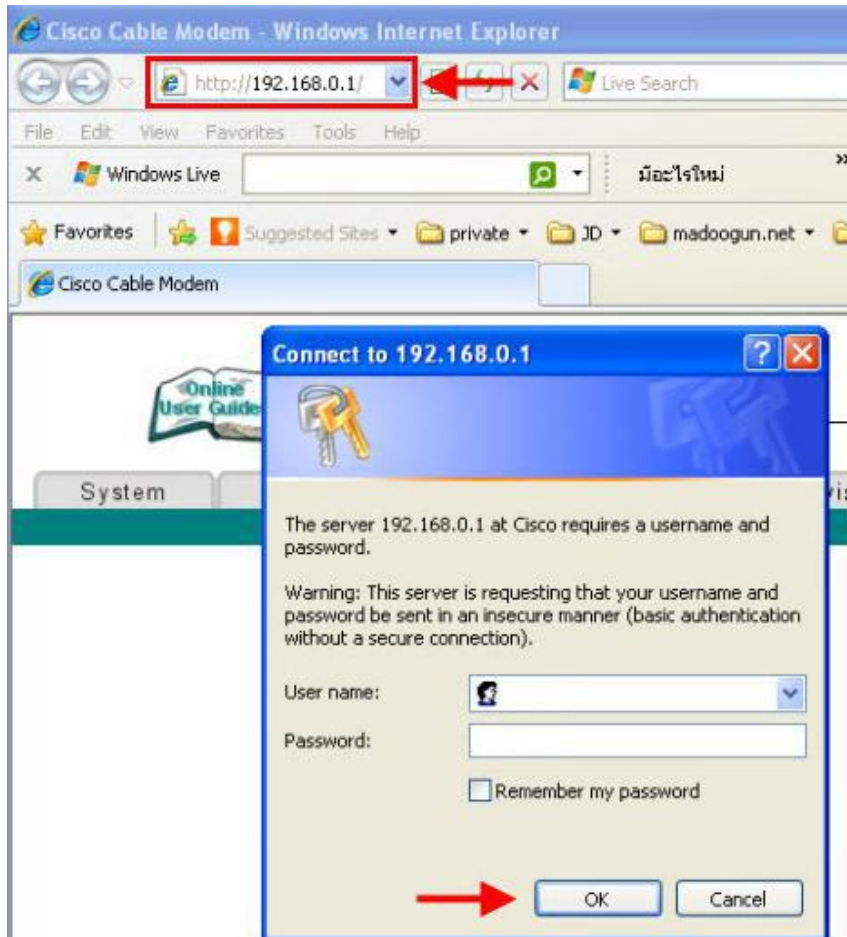
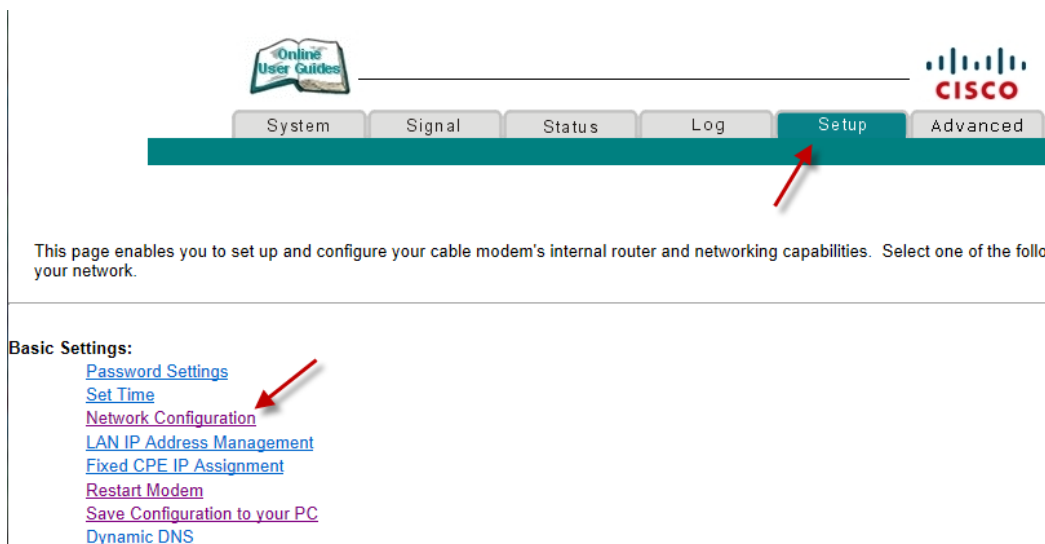


How to check IP WAN on Cable Modem Cisco EPC2325

1. Open a Browser and type <http://192.168.0.1> in the address bar and press enter. (Do not enter username and password)



2. Go to **Setup > Basic Settings > Network Configuration**



3. Go to **WAN > IP Address**

WAN

IP Address: ---.---.---.---
Subnet Mask: ---.---.---.---
Gateway IP: ---.---.---.---
Duration: **D: -- H: -- M: -- S: --**
Expires: -- -- -- --:--:-- -- --

Renew WAN IP Address Lease	Apply
----------------------------	-------