

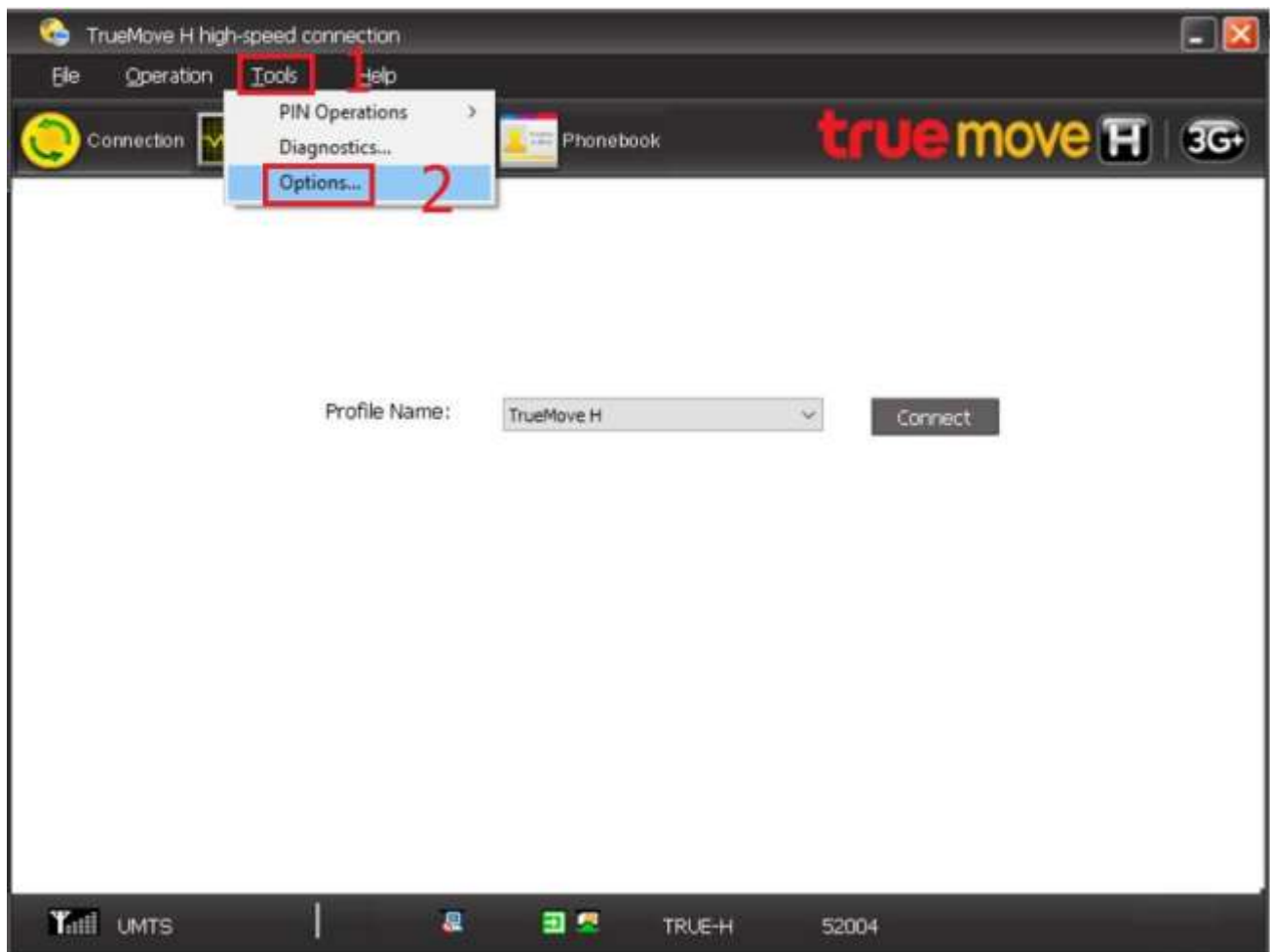
## Update Location Aircard Power Surf II (ZTE MF668A) via TrueMove H high-speed connection

This setting is applicable to Aircard Power Surf II (ZTE MF668A) on computer via TrueMove H high speed connection App

### 1. Open App : TrueMove H high-speed connection

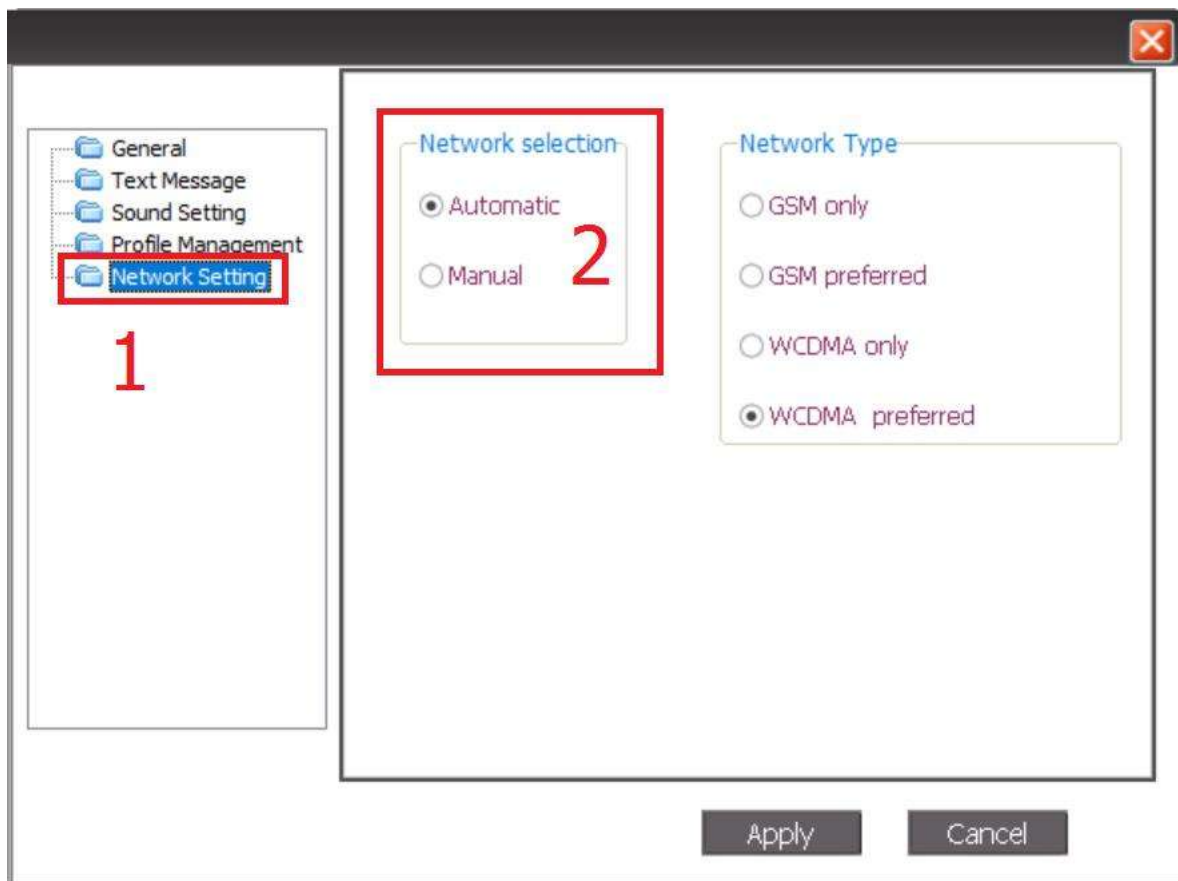


2. On top menu, select Tools > Options...

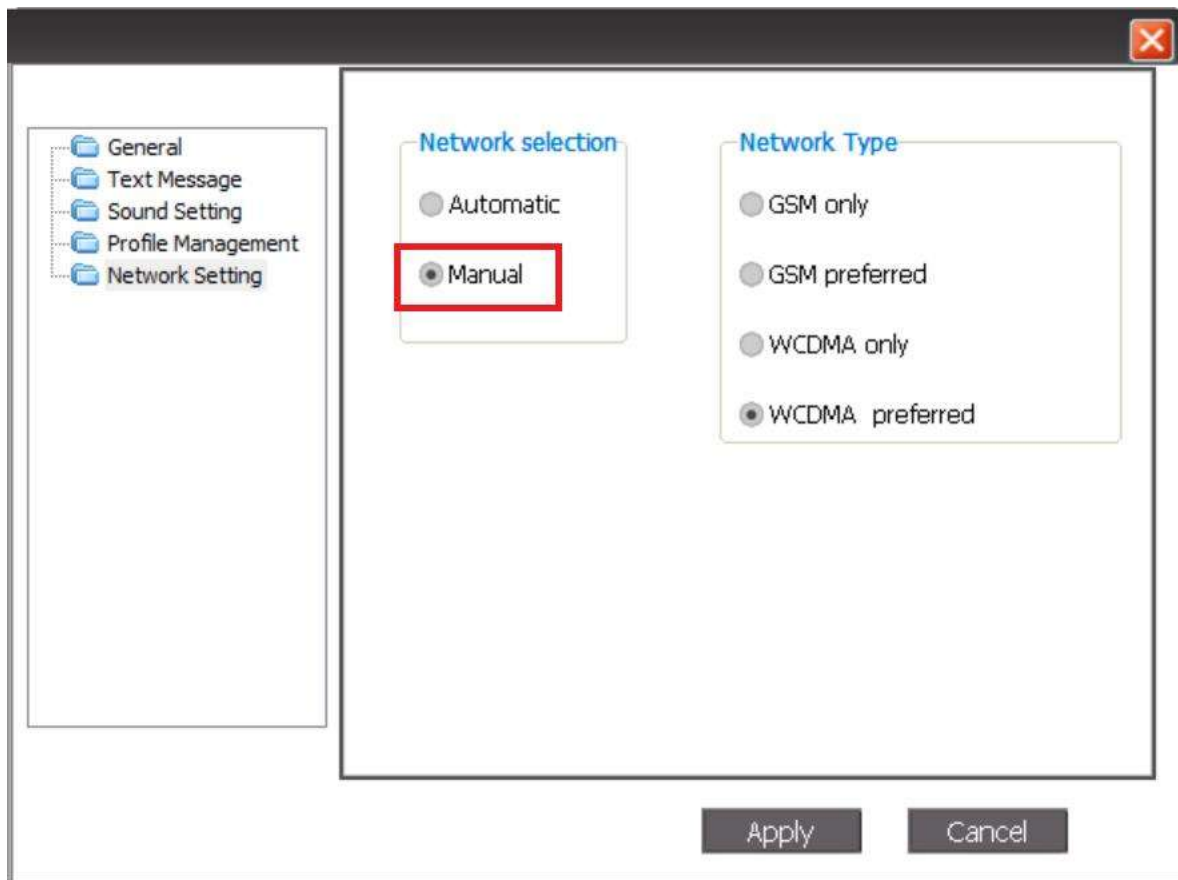


3. On left menu, select Network Setting, and then choose preferred Network selection

- Automatic = auto select network (default setting)
- Manual = manually select network



#### 4. Select Manual to manually choose network

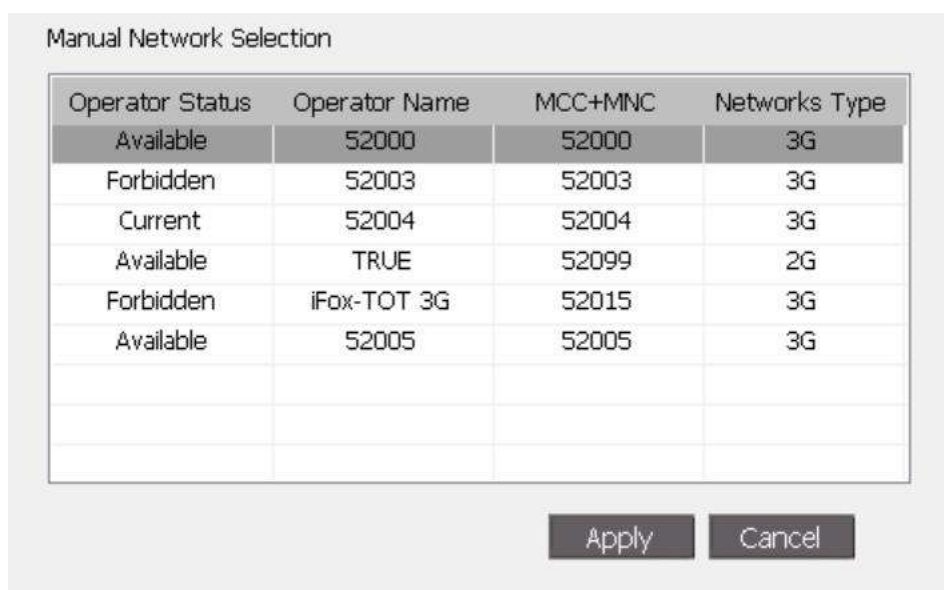


5. Manual Network Selection page, searching for network in that area (around 15 seconds - 2 minutes)

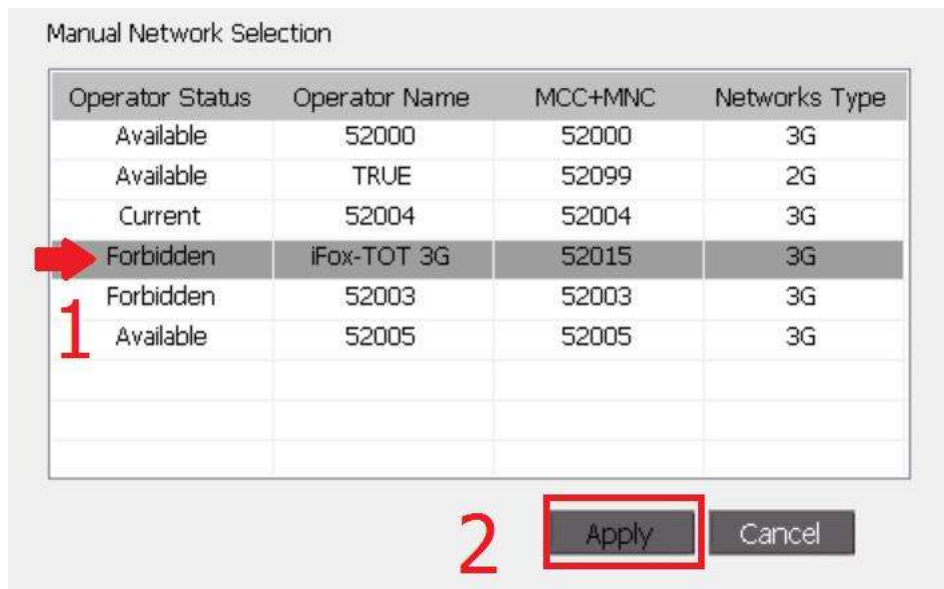


6. Once found, network name lists will appear, notice at Operator Status

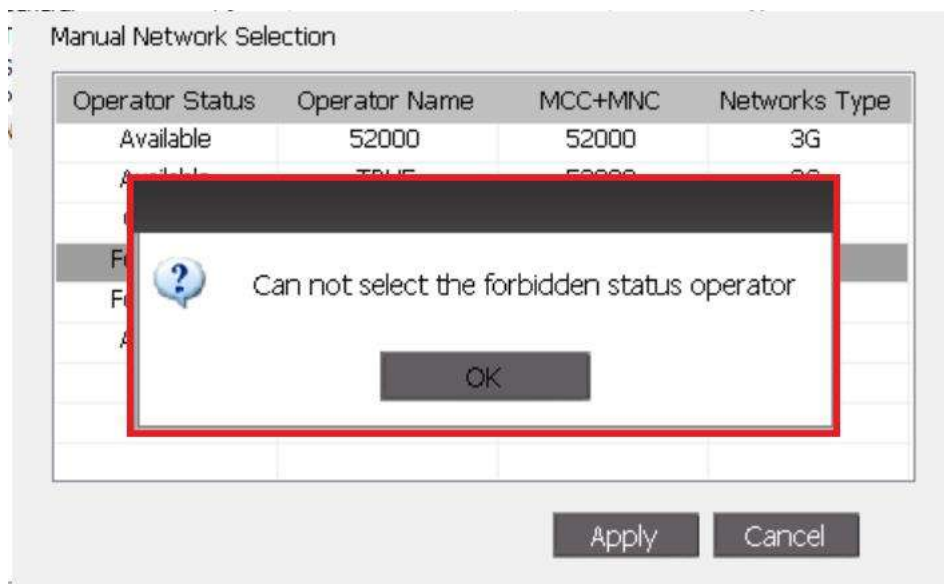
- Available = available to choose
- Forbidden = unable to use
- Current = using network at present



7. Test choosing Forbidden, select the Operator which status is Forbidden then press Apply



8. Cannot select the forbidden status operator, press OK



## 9. Back to Manual Network Selection again

Manual Network Selection

Operator Status	Operator Name	MCC+MNC	Networks Type
Available	52000	52000	3G
Forbidden	52003	52003	3G
Current	52004	52004	3G
Available	TRUE	52099	2G
Forbidden	iFox-TOT 3G	52015	3G
Available	52005	52005	3G

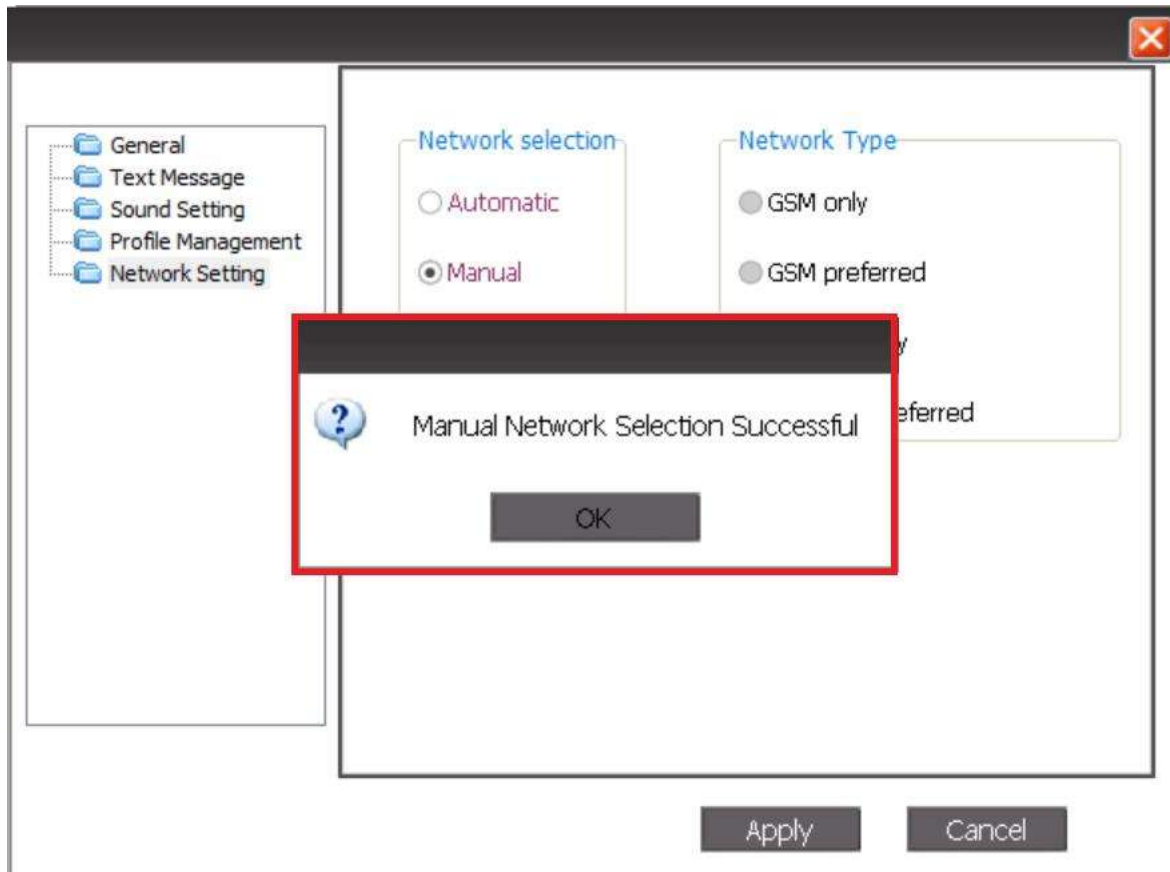
10. Test choosing Available, select the Operator which status is Available then press Apply

Manual Network Selection

Operator Status	Operator Name	MCC+MNC	Networks Type
Available	52000	52000	3G
Forbidden	52003	52003	3G
Current	52004	52004	3G
Available	TRUE	52099	2G
Forbidden	iFox-TOT 3G	52015	3G
Available	52005	52005	3G

2

11. Back to previous page (Options) again, Manual Network Selection Successful will appear





12. At Network selection, select Manual then click red X at top right corner to close Options

