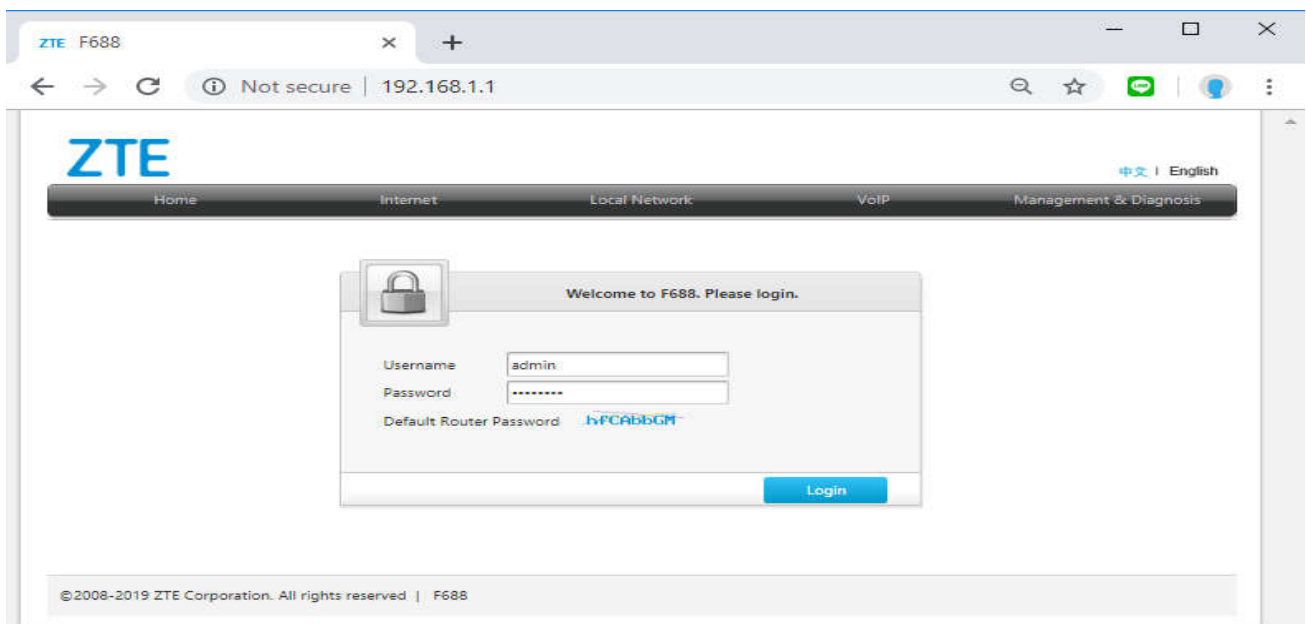


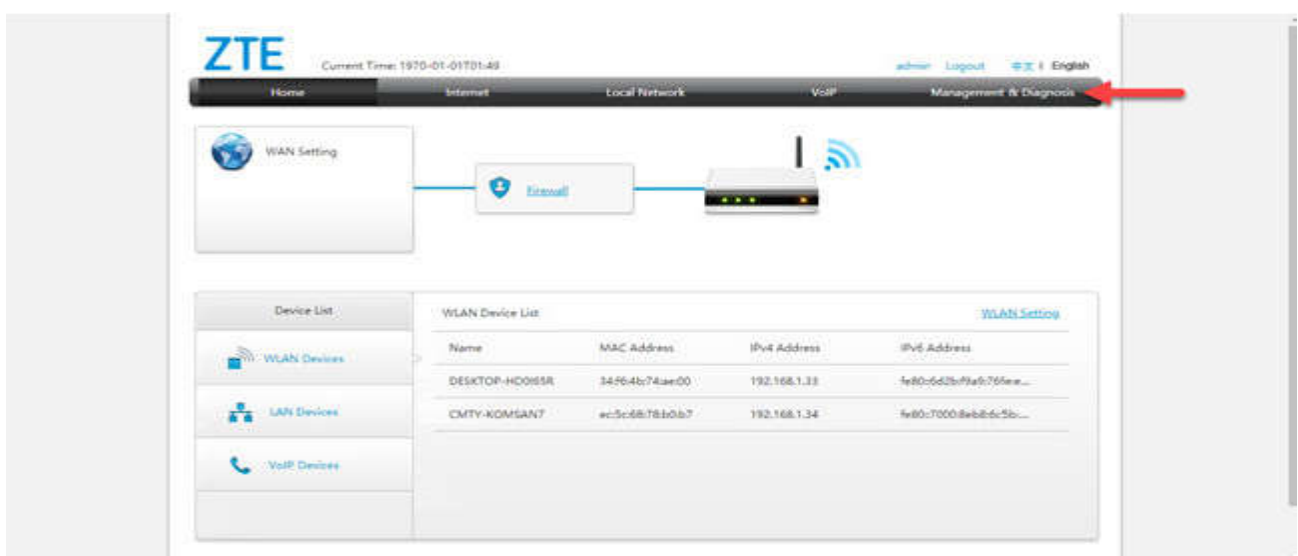
## Change Password to access ZTE F688 Configuration page

1. Type 192.168.1.1 and press Enter

- User = admin
- Password = enter letters as shown below
- press Login



2. At Status > Management & Diagnosis



### 3. Select Account Management

The screenshot shows the ZTE web interface. The top navigation bar includes 'Home', 'Internet', 'Local Network', 'VoIP', and 'Management & Diagnosis'. The left sidebar has a menu with 'Status', 'System Management', 'Account Management', 'Log Management', and 'Diagnosis'. A red arrow points to 'Account Management'. The main content area shows 'Page Information' and 'Device Information'.

Device Information	
Device Type	F688
Device Serial No.	C09FE1-ZTEGC883A092
Batch No.	07e3P1T110389
Hardware Version	V9.0
Software Version	V9.0.10P1T11
Boot Version	V9.0.10P1T5
CPU Usage	6%/2%
Memory Usage	52%
Power On Time	1h56min20s

### 4. Set up as follows:

- Old Password : enter Password
- New Password & Confirm Password : enter new Password
- Press Apply

The screenshot shows the 'User Account Management' configuration page. The sidebar has 'Account Management' selected. The main content area shows a form with the following fields:

- Username: admin
- Old Password: [masked]
- New Password: [masked]
- Confirmed Password: [masked]

Red numbers 1, 2, and 3 are placed next to the Old Password, New Password, and Confirmed Password fields respectively. The 'Apply' button is highlighted with a red number 3. A 'Cancel' button is also visible.