

How to set up WDS on Cisco EPC 2425

WDS is to set up Wireless connection between 2 Wireless Routers or more Routers to support WDS system. One main Router and the second or third Site Router connected to the main Router to increase the wireless distance.

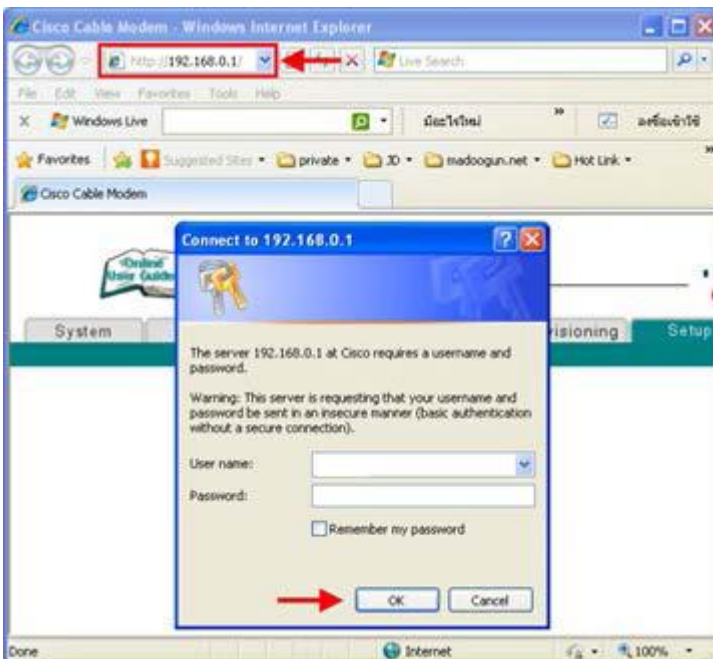
Main Router and Site Router settings

1. **SSID** : same
2. **Channel** : same
3. **Wireless Security** : same
4. **Wireless Bridging** : Enabled
5. **Remote Bridges** : Main Router enter MAC Address of Site Router, whereas the Site Router enter MAC Address of Main Router
6. **IP LAN** : change at Site Router to avoid duplicate IP
7. **DHCP** : Disable at Site Router

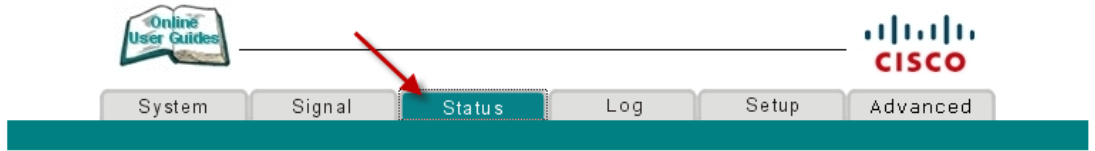
How to set up WDS

1. Open a Browser and type <http://192.168.0.1> in the address bar, enter the username and password then click "OK"

Note: There might be a problem when logging in using Safari, try using another browser.



- Click at **Status** tab, notice **Wireless Primary Interface**
Enter **Wireless Primary Interface** values of **Main Router** in Site Router and entering Site Router's values in Main Router



Computers Detected	1
WAN Isolation	OFF

CPE Connections

The data shown in the table below provides information about the customer premise equipment (CPE) connected to your cable modem.

Connected to	MAC Address	IP Address
Eth-Switch Lan(1)	00:23:AE:43:CF:A8	192.168.0.10

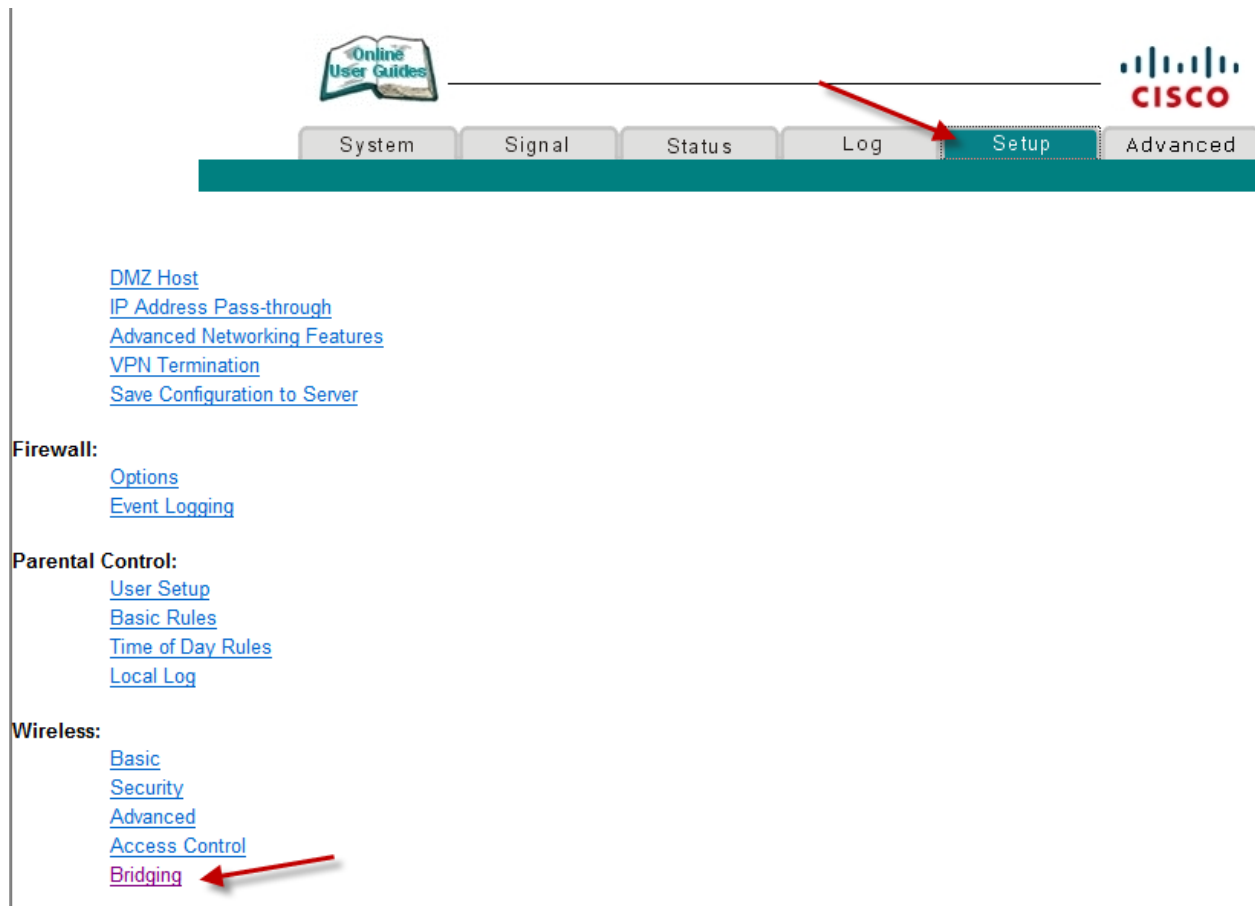
Interface Parameters

The data shown in the table below containing information about the parameters for each interface of your cable modem.

Interface Name	Provisioned	State	Speed	MAC Address
CABLE: Cable Modem Interface	Enabled	Link Down		48-44-87-24-EE-DC
LAN: Ethernet Interface 1	Enabled	Link Up	100 MBits	
LAN: Ethernet Interface 2	Enabled	Link Down		
LAN: Ethernet Interface 3	Enabled	Link Down		
LAN: Ethernet Interface 4	Enabled	Link Down		
Wireless: Wireless Primary Interface	Enabled	Link Up	54 MBits	E0-69-95-49-FF-13
Wireless: Wireless Guest Interface 1	Disabled	Link Down	54 MBits	00-00-00-00-00-00
Wireless: Wireless Guest Interface 2	Disabled	Link Down	54 MBits	00-00-00-00-00-00
Wireless: Wireless Guest Interface 3	Disabled	Link Down	54 MBits	00-00-00-00-00-00

How to turn on Wireless Bridging and entering MAC Address

1. Click **Setup > Wireless > Bridging**



2. Go to **Wireless Bridging > Enabled**


Wireless Bridging

Remote Bridges

3. At **Remote Bridges** enter MAC Address for WDS support e.g. 1a:2b:3c:4d:5e:6f and Click **Apply**

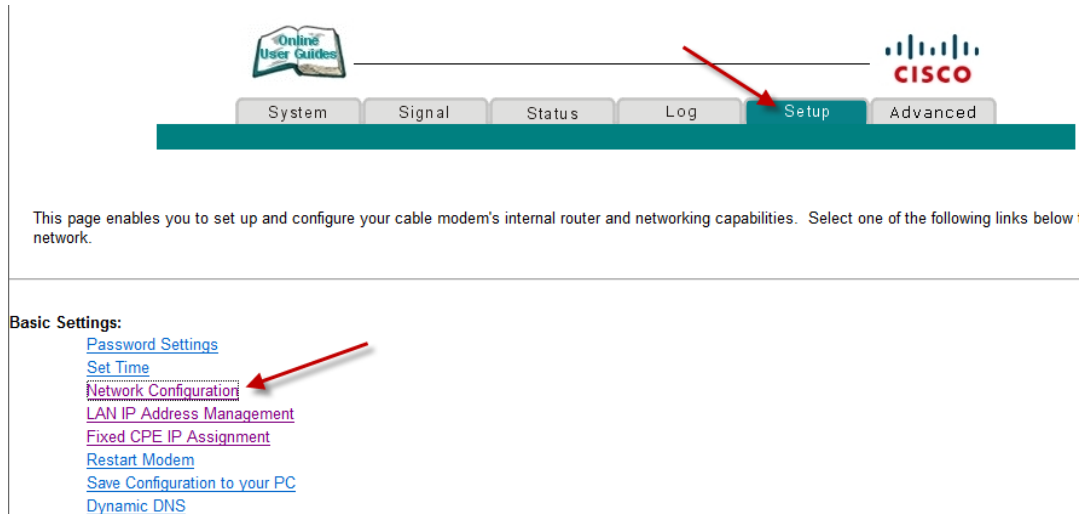
Wireless Bridging

Remote Bridges



How to change IP LAN at Site Router

1. Go to Setup > Network Configuration



2. Correct the last digit for example change to 192.168.0.2 and then click Apply

LAN

IP Address: /
IP Network: **192.168.0.0**
Decimal NetMask: **255.255.255.0**
Broadcast: **192.168.0.255**
MAC Address: **48:44:87:24:ee:dd**

WAN

IP Address: ---.---.---.---
Subnet Mask: ---.---.---.---
Gateway IP: ---.---.---.---
Duration: **D: -- H: -- M: -- S: --**
Expires: ---:---:---:---

Host Name (Required by some ISPs)
Domain Name (Required by some ISPs)
Static IP Address . . .
Static IP Mask . . .
Default Gateway . . .
Primary DNS (static IP only) . . .
Secondary DNS (static IP only) . . .
MTU Size (256-1500 octets, 0 = use default)



How to disable DHCP at Site Router

1. Click at **Setup > LAN IP Address Management**

Online User Guides

System Signal Status Log **Setup** Advanced

CISCO

This page enables you to set up and configure your cable modem's internal router and networking capabilities. Select one of the following links below network.

Basic Settings:

- [Password Settings](#)
- [Set Time](#)
- [Network Configuration](#)
- [LAN IP Address Management](#)
- [Fixed CPE IP Assignment](#)
- [Restart Modem](#)
- [Save Configuration to your PC](#)
- [Dynamic DNS](#)

2. Click **No** at **DHCP** and then click **Apply**

DHCP Server Yes No

Starting Local Address

Number of CPEs

Lease Time