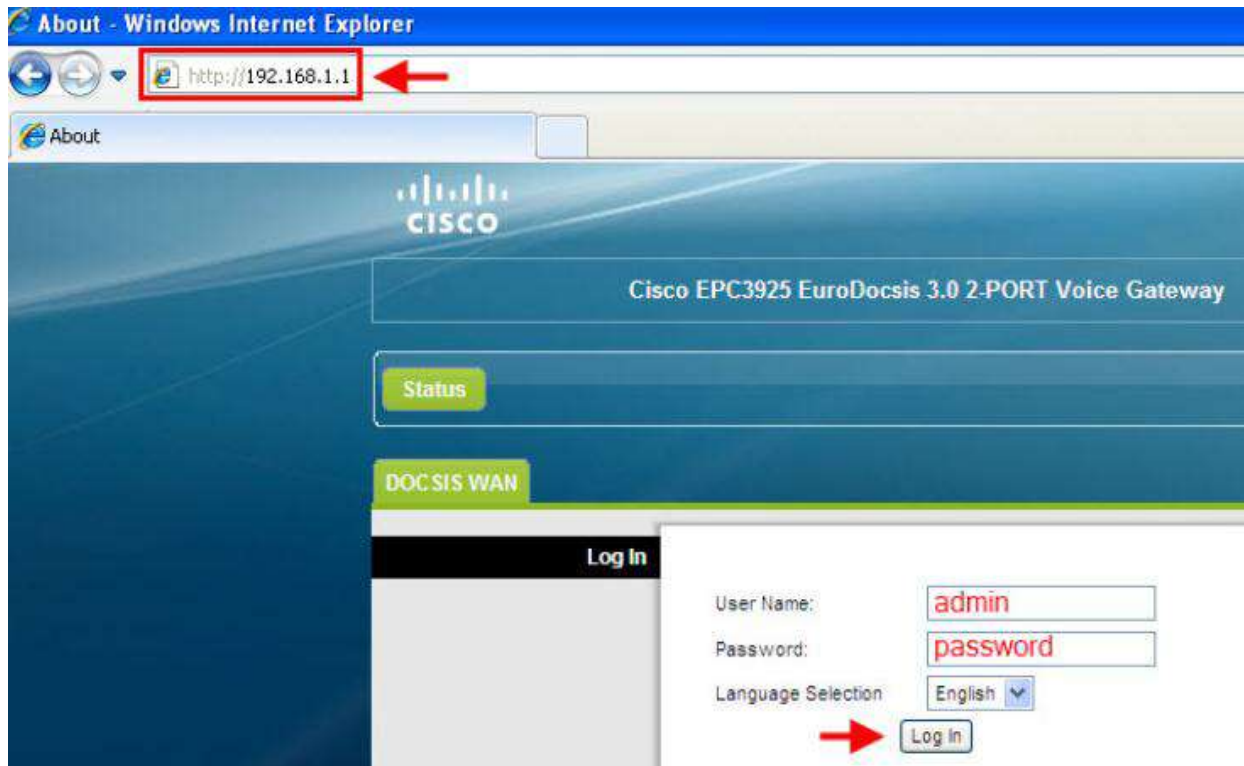
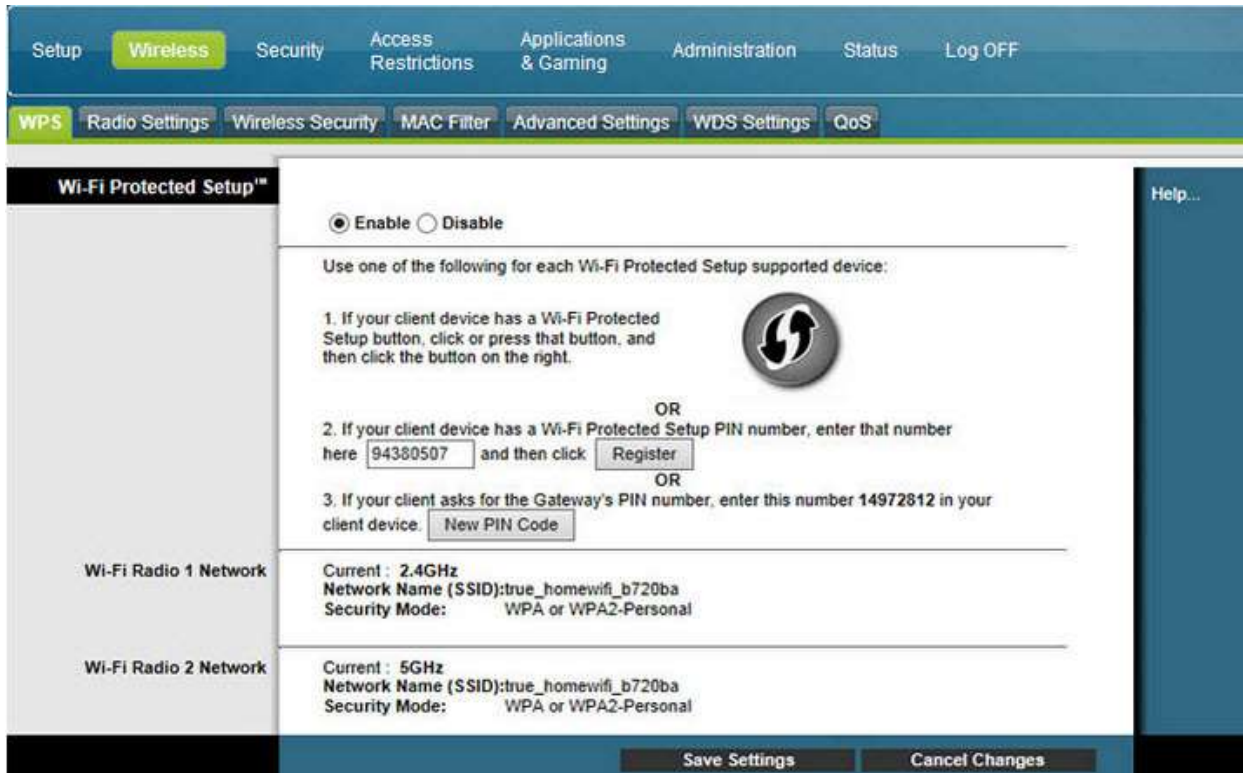


Set up Wireless for Cisco EPC3928D

1. Open a Browser and type <http://192.168.1.1> in Address bar, Username = admin, Password = password and click Log In



2. At WPS, click Enable when want to use WPS (connect Wireless by pressing button at router and select WPS at device)



3. At Wireless > Radio Settings, separated into 2 sections: Wi-Fi Radio 1 Network (2.4GHz) and Wi-Fi Radio 2 Network (5GHz)

- Click Enable Wireless Interface
- Network Mode : B/G/N Mixed
- Standard Channel : Auto or Channel that's most free in that area
- Tick a check at Broadcast SSID
- Click Save Settings

Wi-Fi Radio 1 Network

คลิกเลือกที่ Disable เพื่อปิดการใช้งาน Wireless Band 2.4 GHz

Wireless Interface: Enable Disable

802.11 Band: Enabled 2.4GHz (Current: 2.4GHz) [Scan 2.4GHz APs]

Network Mode: B/G/N Mixed [B/G Only, N Only, B/G/N Mixed]

Channel Width: Auto (20 or 40MHz) (Current: 20MHz) [20MHz Only, Auto (20 or 40MHz)]

Channel: Auto (Current: 11, Interference Level: Acceptable)

Extended Channel: Auto

Network Name (SSID)	MAC Address (BSSID)	SSID Broadcast
true_homewifi_b720ba	20:25:64:19:AC:19	<input checked="" type="checkbox"/>

Wi-Fi Radio 2 Network

คลิกเลือกที่ Disable เพื่อปิดการใช้งาน Wireless Band 5 GHz

Wireless Interface: Enable Disable

802.11 Band: Enabled 5GHz (Current: 5GHz) [Scan 5GHz APs]

Network Mode: A/N Mixed [A Only, N Only, A/N Mixed]

Channel Width: Auto (20 or 40MHz) (Current: 40MHz) [20MHz Only, Auto (20 or 40MHz)]

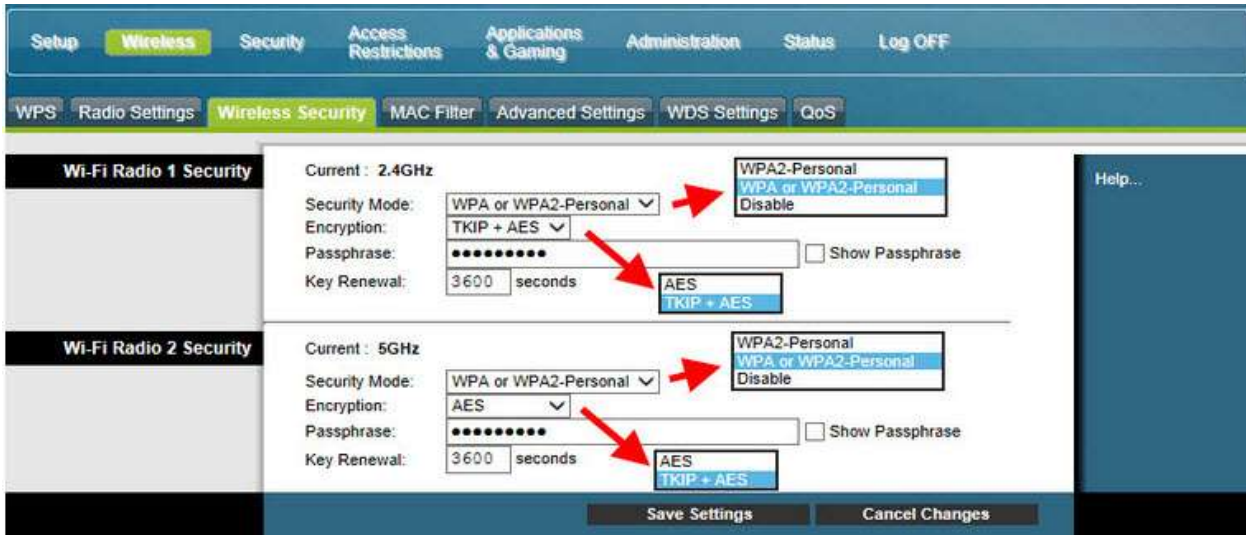
Channel: Auto (Current: 112, Interference Level: Acceptable)

Extended Channel: Auto (Current: 108)

Network Name (SSID)	MAC Address (BSSID)	SSID Broadcast
true_homewifi_b720ba	20:25:64:20:9B:05	<input checked="" type="checkbox"/>

Save Settings Cancel Changes

4. At Wireless Security, separated into 2 sections: Wi-Fi Radio 1 Security (2.4GHz) and Wi-Fi Radio 2 Security (5GHz): It can be set various types as shown but recommend to set as WPA or WPA2 - Personal



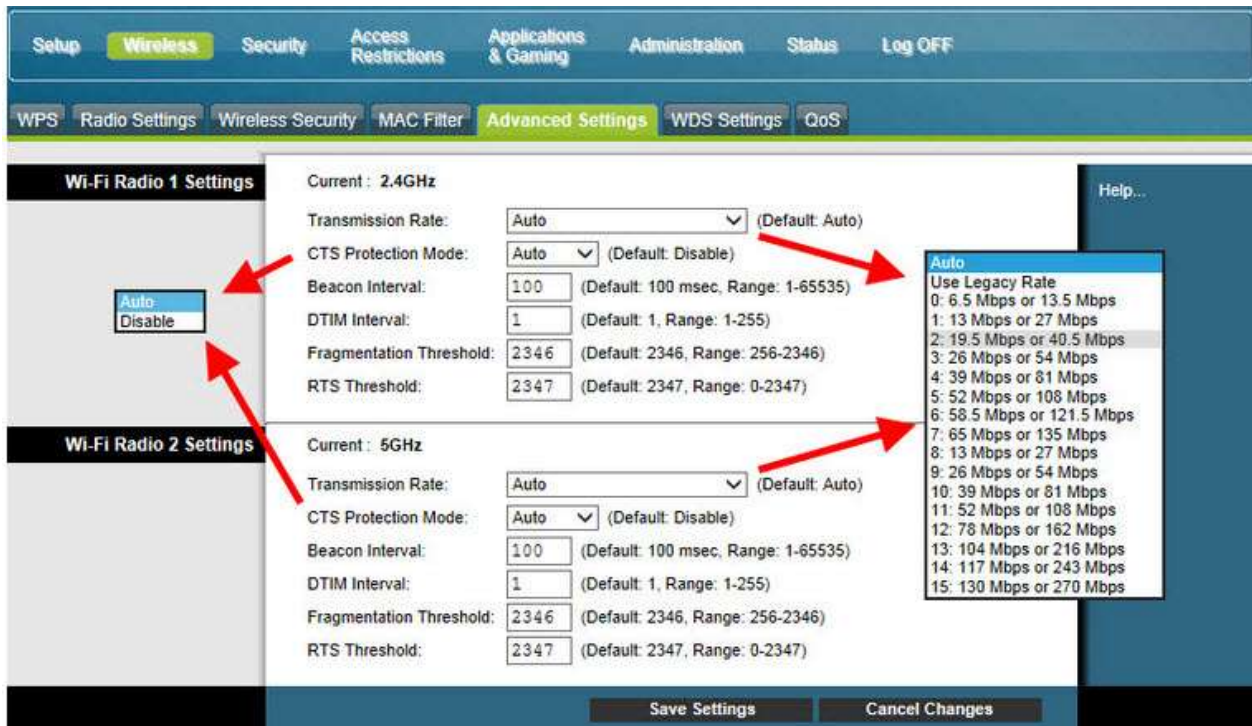
5. At MAC Filter, to use click Enable

- Select Block to block below MAC Address to access wireless network
- Select Permit to allow below MAC Address to access wireless network
- Up to 32 MAC Address can be set up
- Click Save Settings

The screenshot shows the 'MAC Filter' configuration page. The 'Enable' radio button is selected. Under 'Access Restriction', the 'Block computers listed below from accessing the wireless network' option is selected. The 'MAC Address Filter List' section contains a table with 32 rows, each with a MAC address field and a corresponding MAC address value (all shown as 00:00:00:00:00:00). At the bottom, there are 'Save Settings' and 'Cancel Changes' buttons.

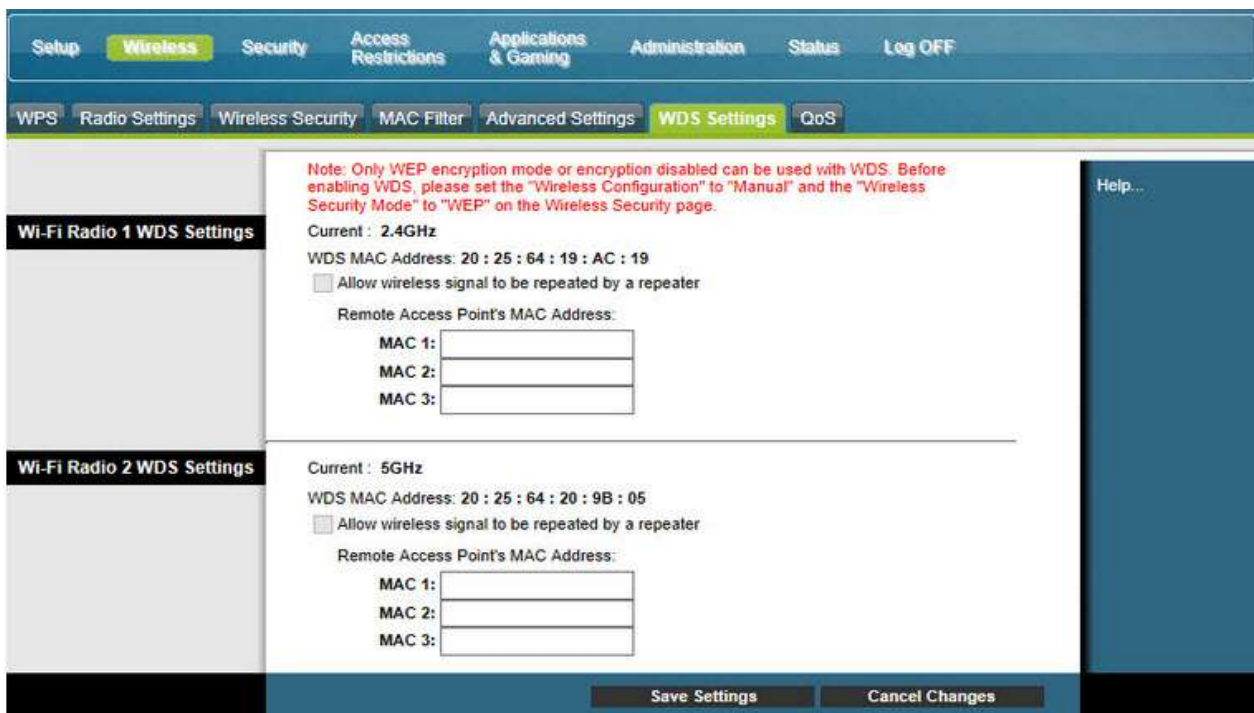
MAC Address	MAC Address
MAC 01	00:00:00:00:00:00
MAC 02	00:00:00:00:00:00
MAC 03	00:00:00:00:00:00
MAC 04	00:00:00:00:00:00
MAC 05	00:00:00:00:00:00
MAC 06	00:00:00:00:00:00
MAC 07	00:00:00:00:00:00
MAC 08	00:00:00:00:00:00
MAC 09	00:00:00:00:00:00
MAC 10	00:00:00:00:00:00
MAC 11	00:00:00:00:00:00
MAC 12	00:00:00:00:00:00
MAC 13	00:00:00:00:00:00
MAC 14	00:00:00:00:00:00
MAC 15	00:00:00:00:00:00
MAC 16	00:00:00:00:00:00
MAC 17	00:00:00:00:00:00
MAC 18	00:00:00:00:00:00
MAC 19	00:00:00:00:00:00
MAC 20	00:00:00:00:00:00
MAC 21	00:00:00:00:00:00
MAC 22	00:00:00:00:00:00
MAC 23	00:00:00:00:00:00
MAC 24	00:00:00:00:00:00
MAC 25	00:00:00:00:00:00
MAC 26	00:00:00:00:00:00
MAC 27	00:00:00:00:00:00
MAC 28	00:00:00:00:00:00
MAC 29	00:00:00:00:00:00
MAC 30	00:00:00:00:00:00
MAC 31	00:00:00:00:00:00
MAC 32	00:00:00:00:00:00

6. At Advance Settings, separated into 2 sections: Wi-Fi Radio 1 Settings (2.4GHz) and Wi-Fi Radio 2 Settings (5GHz), set up as follows:



7. At WDS Settings, separated into 2 sections: Wi-Fi Radio 1 WDS Settings (2.4GHz) and Wi-Fi Radio 2 WDS Settings (5GHz)

- Tick a check at Allow Wireless Signal..... if want to set, bring MAC Address of other Router Wireless to enter in MAC1 (up to MAC3)
- Click Save Settings



8. At QoS set up as follows:

