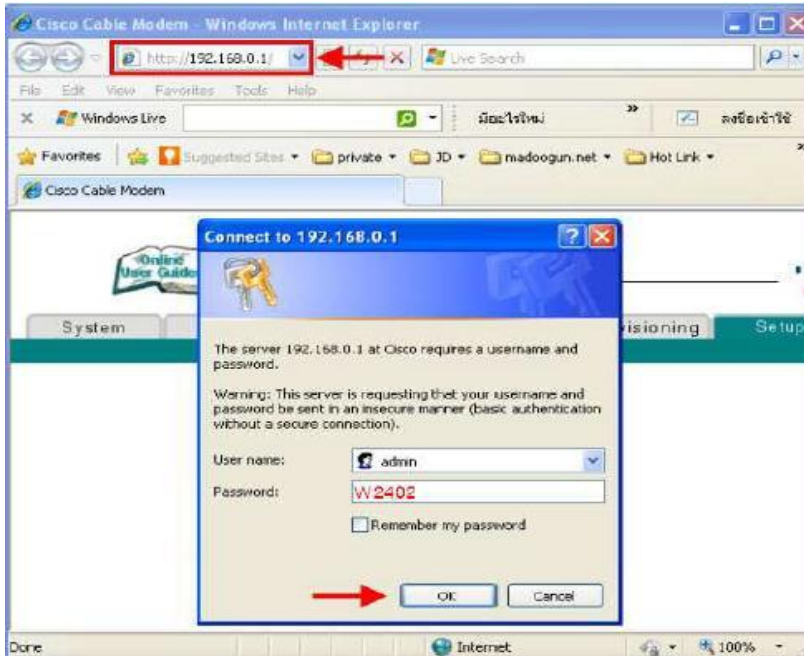
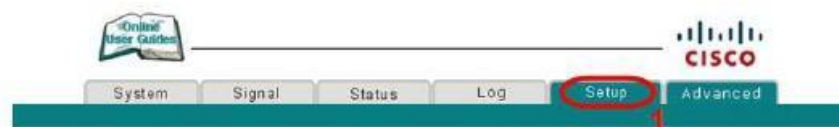


How to set Password on Cisco EPC2325 Cable Modem

1. Open a Browser and type <http://192.168.0.1> in the address bar and press enter. Enter Username = **admin**, Password = **W2402** and click OK.



2. Go to **Setup** > **Basic Settings** > **Password Settings**



This page enables you to set up and configure your cable modem's internal router and networking capabilities. Select one of the following links below to set up your network.

Basic Settings:

- Password Settings** **2**
- [Set Time](#)
- [Network Configuration](#)
- [LAN IP Address Management](#)
- [Fixed CPE IP Assignment](#)
- [Restart Modem](#)
- [Save Configuration to your PC](#)
- [Dynamic DNS](#)

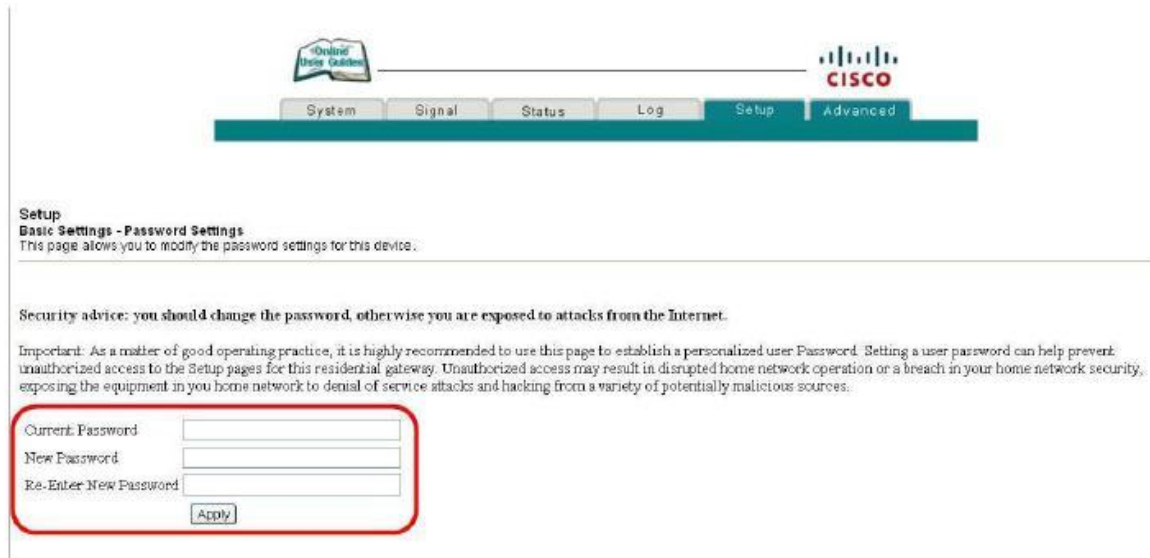
Advanced Settings:

- [Options](#)
- [IP Address Filtering](#)
- [MAC Address Filtering](#)
- [Port Filtering](#)
- [Port Forwarding](#)
- [Port Triggers](#)
- [DMZ Host](#)
- [IP Address Pass-through](#)
- [Advanced Networking Features](#)
- [VPN Termination](#)
- [Save Configuration to Server](#)

Firewall:

- [Options](#)
- [Event Logging](#)

3. You can change password by entering Current Password and then enter New Password and re-enter.



The screenshot shows the Cisco Setup interface. At the top, there is a navigation bar with tabs for System, Signal, Status, Log, Setup, and Advanced. The Setup tab is currently selected. Below the navigation bar, the page title is "Setup" and the subtitle is "Basic Settings - Password Settings". A brief description states: "This page allows you to modify the password settings for this device." A security warning follows: "Security advice: you should change the password, otherwise you are exposed to attacks from the Internet." Below this, an important note reads: "Important: As a matter of good operating practice, it is highly recommended to use this page to establish a personalized user Password. Setting a user password can help prevent unauthorized access to the Setup pages for this residential gateway. Unauthorized access may result in disrupted home network operation or a breach in your home network security, exposing the equipment in your home network to denial of service attacks and hacking from a variety of potentially malicious sources." The main form area contains three input fields: "Current Password", "New Password", and "Re-Enter New Password". An "Apply" button is located below the "Re-Enter New Password" field. The entire form area is enclosed in a red rounded rectangle.

Online Help Guides

CISCO

System Signal Status Log Setup Advanced

Setup
Basic Settings - Password Settings
This page allows you to modify the password settings for this device.

Security advice: you should change the password, otherwise you are exposed to attacks from the Internet.

Important: As a matter of good operating practice, it is highly recommended to use this page to establish a personalized user Password. Setting a user password can help prevent unauthorized access to the Setup pages for this residential gateway. Unauthorized access may result in disrupted home network operation or a breach in your home network security, exposing the equipment in your home network to denial of service attacks and hacking from a variety of potentially malicious sources.

Current Password

New Password

Re-Enter New Password

Apply