

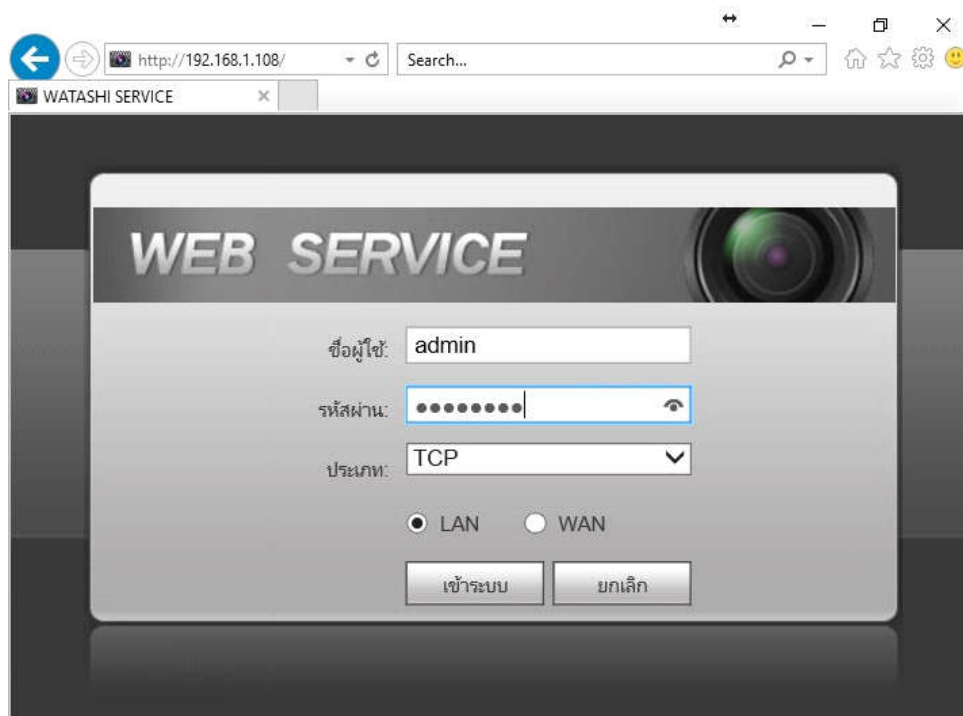
## How to solve problem Skyworth GN542VF setup with True DDNS and IP camera

### Check IP Address and Port of IP Camera to set Port forwarding at Router

1. Check the setting at DVR that's the center to record data from all cameras in house (ex. Watashi IP Camera)

- Type IP Address of DVR at Browser, Ex. 192.168.1.108 then press Enter
- Enter Username and password of DVR then press Log in

\*\* in case you don't know IP Address, Username and password of DVR, ask the technician who installed DVR



## 2. Check IP Address, go to Setting > Network > TCP/IP > IP

Address of DVR : 192.168.1.108

WATASHI SERVICE

ภาพสด    ดูย้อนหลัง    ค้นหา ใบหน้า    สัญญาณเตือน    ตั้งค่า

ระบบไกล

เครือข่าย

TCP/IP

การเชื่อมต่อ

อินเทอร์เน็ตไร้สาย

3G/4G

PPPoE

DDNS

IP กรอง

TCP/IP

เวอร์ชัน IP    IPv4

MAC Address    3c . ef . 8c . 14 . 3c . 1d

โหมด     คงที่     DHCP

IP Address    192 . 168 . 1 . 108

Subnet Mask    255 . 255 . 255 . 0

Default Gateway    192 . 168 . 1 . 1

## 2. Check Port, go to Setting > Network > Connection, mostly used

Ports :

- TCP Port : 37777 (Port to view camera via Application on Smart Phone)
- HTTP Port : 81 (Port to view camera via Web Browser)

WATASHI SERVICE

ภาพสด    ดูย้อนหลัง    ค้นหา ใบหน้า    สัญญาณเตือน    ตั้งค่า

ระบบไกล

เครือข่าย

TCP/IP

การเชื่อมต่อ

อินเทอร์เน็ตไร้สาย

3G/4G

PPPoE

DDNS

เชื่อมต่อ    HTTPS

เชื่อมต่อสูงสุด    128    (0~128)

ช่อง TCP พอร์ต    37777    (1025~65535)

พอร์ต UDP    37778    (1025~65535)

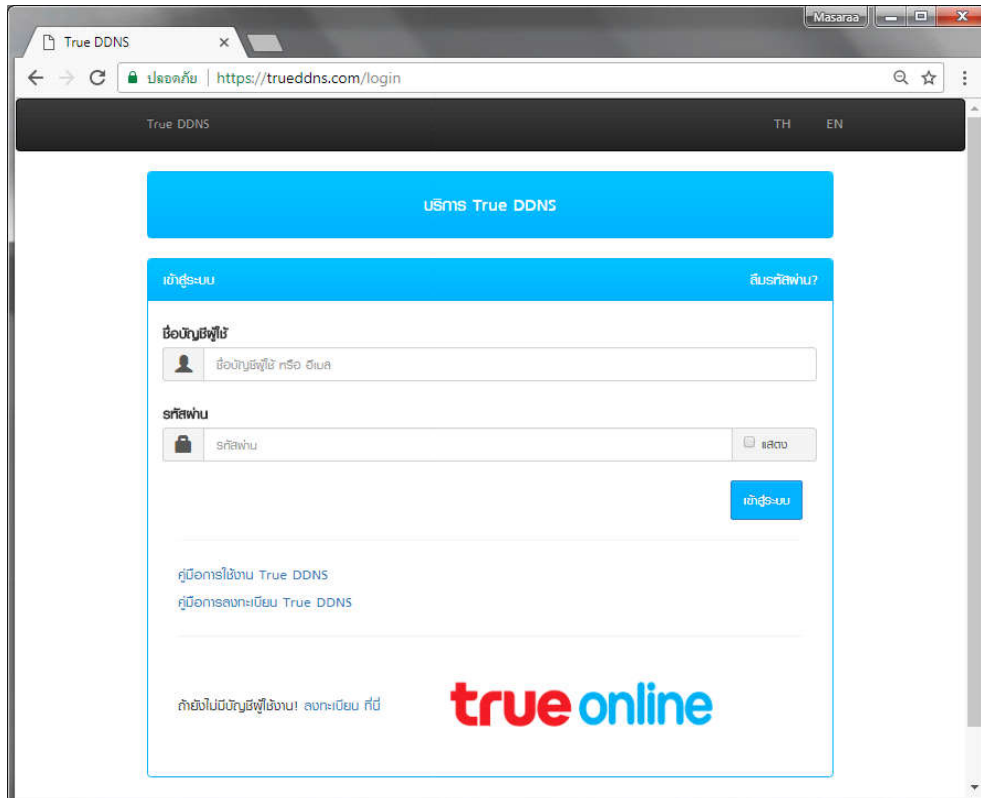
พอร์ต HTTP    81    (1~65535)

พอร์ต HTTPS    443    (1~65535)     ใช้งาน

พอร์ต RTSP    554    (1~65535)

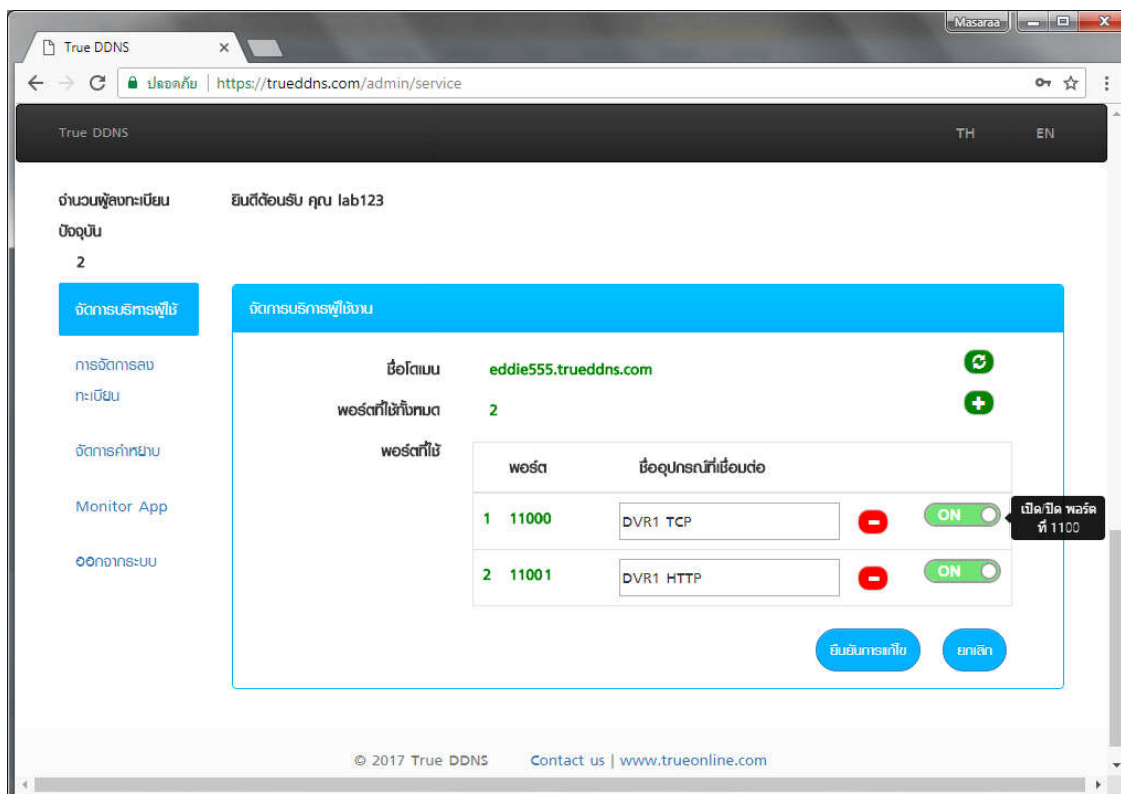
## Setup TrueDDNS

1. Type <https://trueddns.com/login> at Browser then press Enter  
> Login by using registered Username and password then press  
Log in

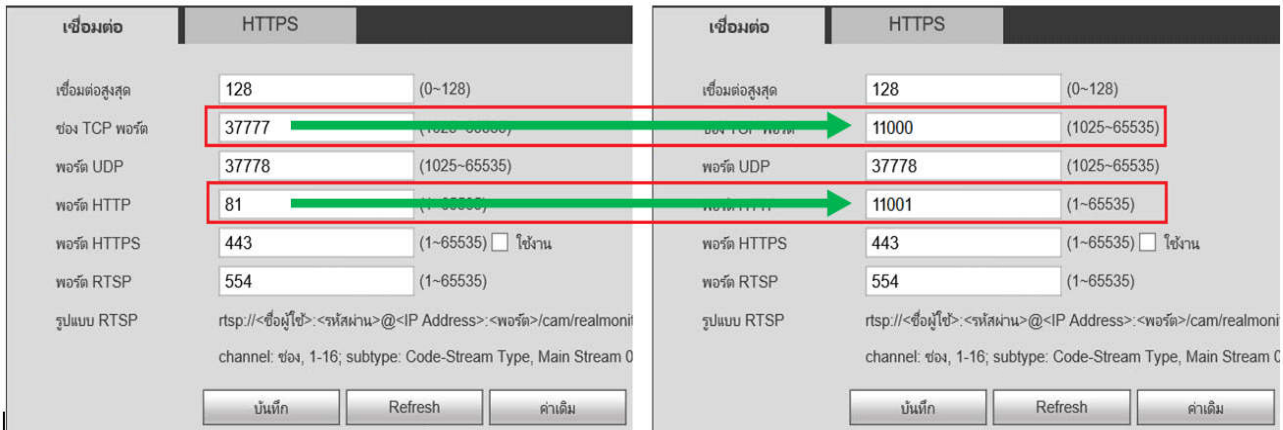


## 1. Select Service Management

- pairing Port to align with DVR
- Port 11000 : set TCP name to be the same as TCP Port of DVR, click a behind button to turn ON
- Port 11001 : set HTTP name to be the same as HTTP Port of DVR, click a behind button to turn ON
- When finished, press Confirm

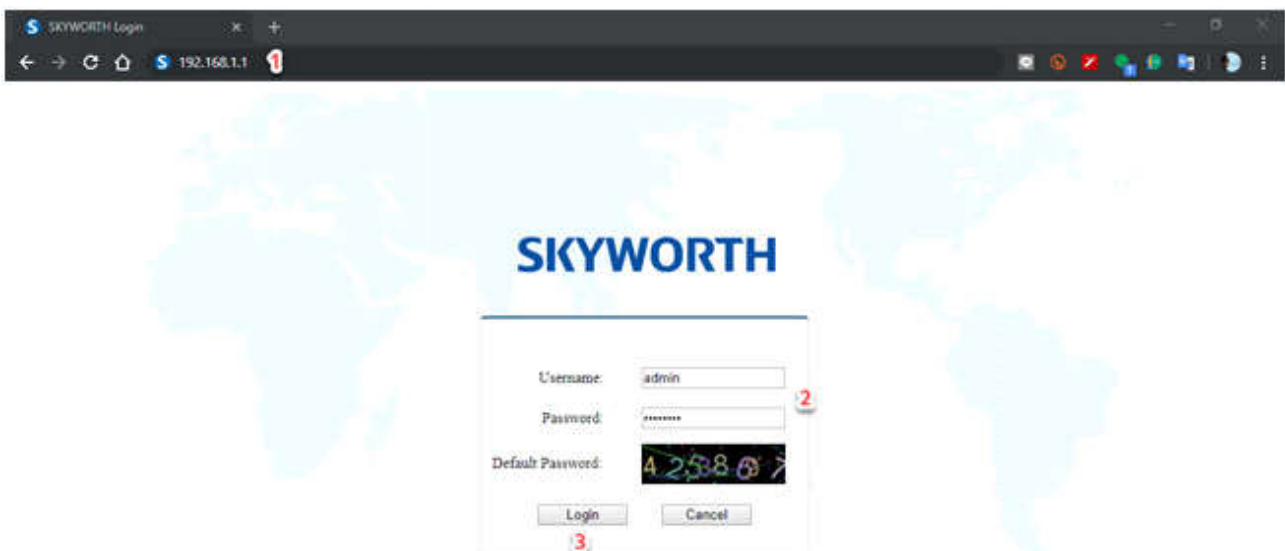


2. Use Port number received from TrueDDNS to enter in replace of old Port number of DVR then press Save

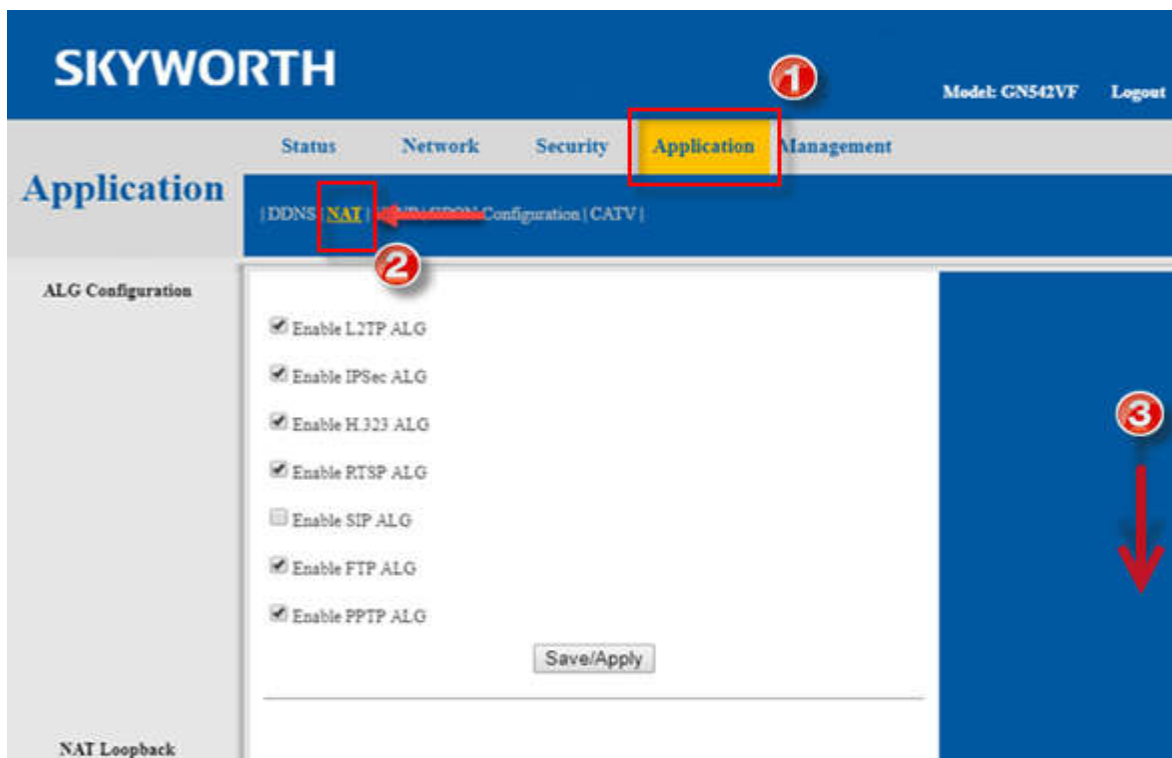


### Post Forward setup at Router

1. Type 192.168.1.1 > Username = admin, Password = password = enter letters as shown below then press Login



2. Application > NAT > go down



Go to Port Forwarding Virtual Server, there're 2 setup parameters:

View via App on Smart Phone

- Interface : select 1\_TR069\_INTERNET\_R\_VID\_100
- Select Custom Service
- Protocol : select preferred Protocol
- External Start / End Port : 11000
- Internal Port : 11000
- Internal IP Address :192.168.1.108
- Mapping Name : enter name
- Press Add

**Port Forwarding  
Virtual Server**

Interface: 1\_TR069\_INTERNET\_R\_VID\_100 1

Custom Service 2  
 Select a Service

Protocol: TCP 3

External Start Port: 11000 4

External End Port: 11000 4

Internal Port: 11000 5

Internal IP: 192.168.1.108 6

Mapping Name: Test 7

Add 8

Protocol	External Start Port	External End Port	Internal Port	Internal Host	Name	Delete

Delete

## View via Web Browser

- Interface : select 1\_TR069\_INTERNET\_R\_VID\_100
- Select Custom Service
- Protocol : select preferred Protocol
- External Start / End Port : 11001
- Internal Port : 11001
- Internal IP Address : 192.168.1.108
- Mapping Name : enter name
- Press Add

**Port Forwarding Virtual Server**

Interface: 1\_TR069\_INTERNET\_R\_VID\_100 **1**

Custom Service **2**  
 Select a Service

Protocol: TCP **3**

External Start Port: 11001 **4**

External End Port: 11001 **4**

Internal Port: 11001 **5**

Internal IP: 192.168.1.108 **6**

Mapping Name: Test **7**

**Add** **8**

Protocol	External Start Port	External End Port	Internal Port	Internal Host	Name	Delete

**Delete**



3. After setting, it'll show in a below table (number of Port Forwarding depends on using device, may have only 1 port or more)

**Port Forwarding  
Virtual Server**

Interface: 1\_TR069\_INTERNET\_R\_VID\_100 ▾

Custom Service  
 Select a Service Select... ▾

Protocol: TCP ▾

External Start Port:

External End Port:

Internal Port:

Internal IP:

Mapping Name:

Protocol	External Start Port	External End Port	Internal Port	Internal Host	Name	Delete
TCP	11000	11000	11000	192.168.1.108	DVR1 TCP	<input type="checkbox"/>
TCP	11001	11001	11001	192.168.1.108	DVR1 HTTP	<input type="checkbox"/>

## Cancel DDNS setting at Router

1. Go to Application
2. Select DDNS
3. Click a check at Profile you want to delete
4. Press Delete

**SKYWORTH** Model: GNS42VF Logout

Status Network Security **Application** Management

Application | **DDNS** | NAT | UPNP | GPON Configuration | CATV

**DDNS Configuration**

Enable:

Provider:

Server:

Port:

Interface:

Domain Name:

User Name:

Password:

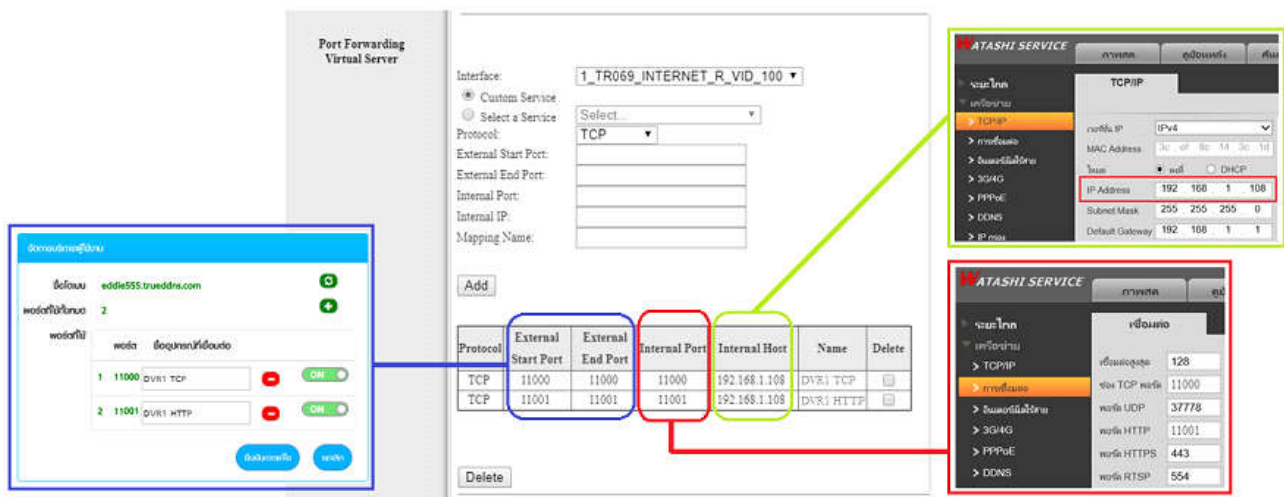
DDNS Name	Interface	Enable	Protocol	Domain Name	User Name	Password	Delete
dyndns.org	ppp0	Enable	GNDip.http	demo.dyndns.org	demo	*****	<input checked="" type="checkbox"/>

## Cancel DDNS setting at DVR

1. Go to Setting > DDNS
2. Remove a check mark
3. Press Save

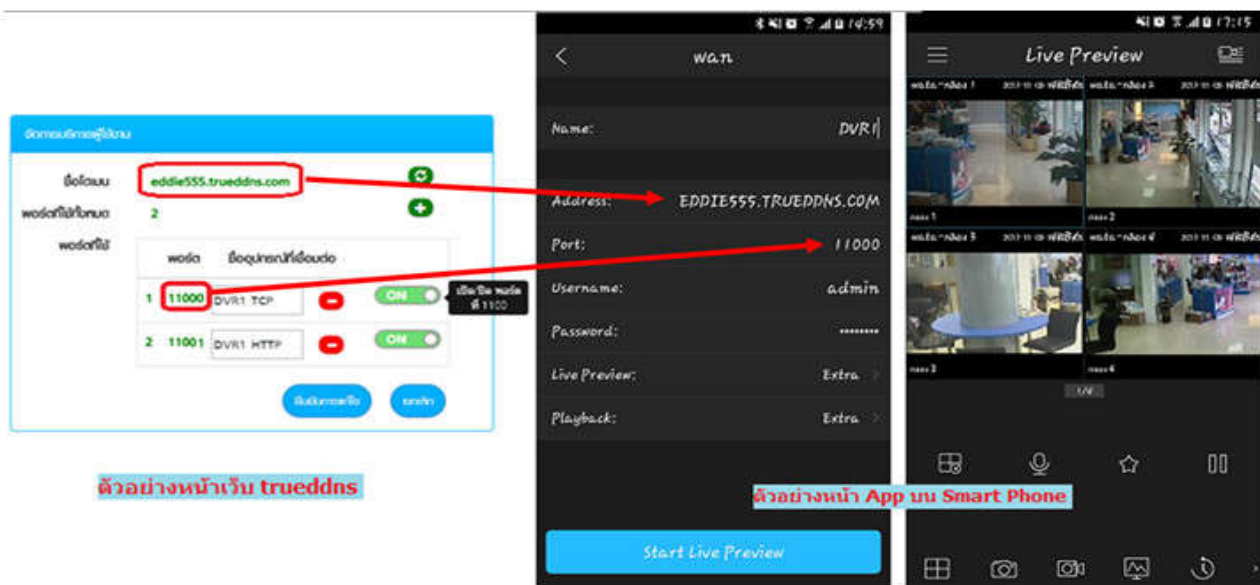


## Overall settings



Test by using Mobile Internet or Internet that is different from at home

1. Test IP Camera App on Smart Phone by using Domain name and Port number from True DDNS, if the setting is correct, you'll see pictures from camera



2. Test the usage via Web : enter Domain name followed by Port number from TrueDDNS Ex. eddie555.trueddns.com :11001 , If the setting is correct, you can access web page of IP Camera

