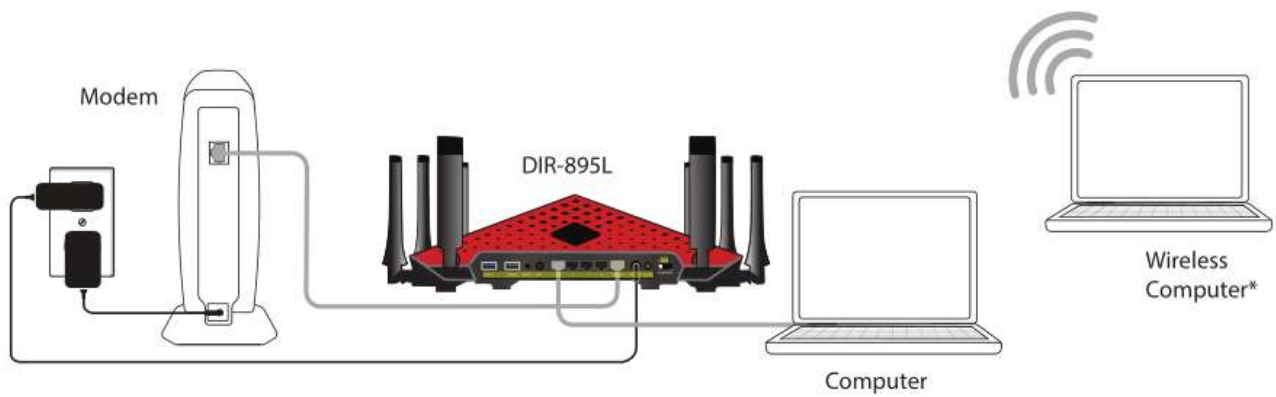
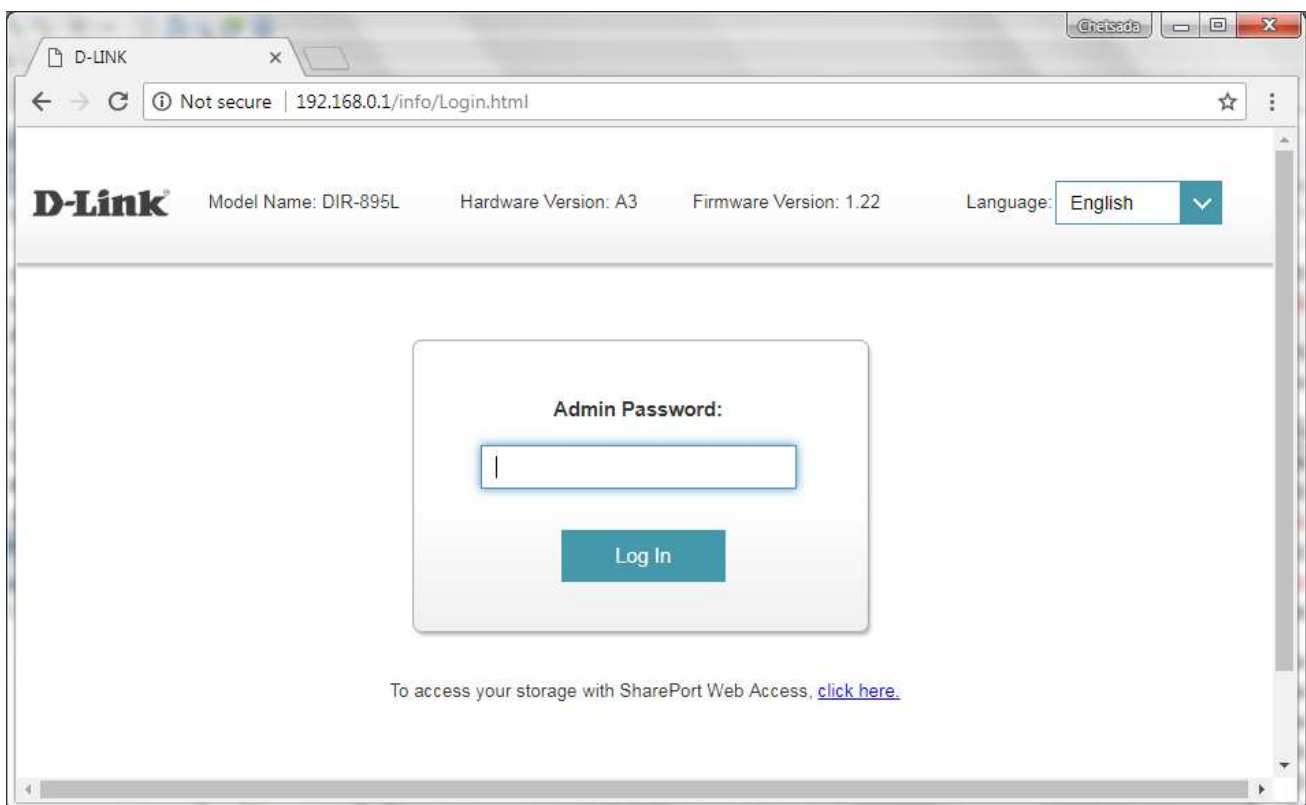


Wizard Setup and first setup on AP D-Link DIR-895L

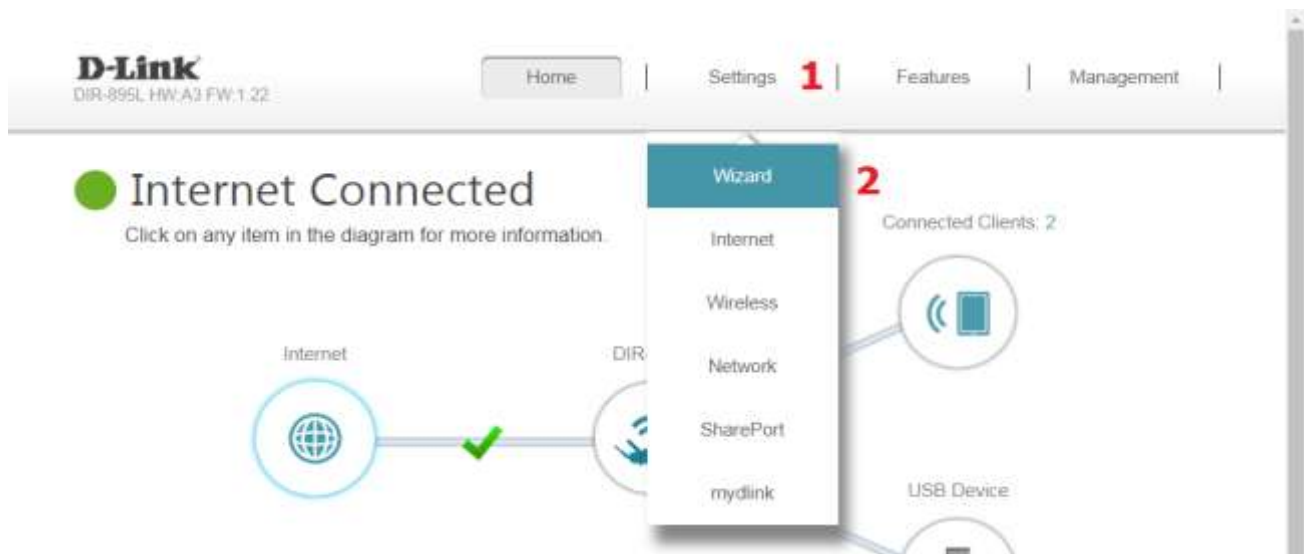
1. Diagram connection between : Modem + AP D-Link + Computer



2. Open a Browser, type 192.168.0.1 > **do not enter the password** > press **Login**

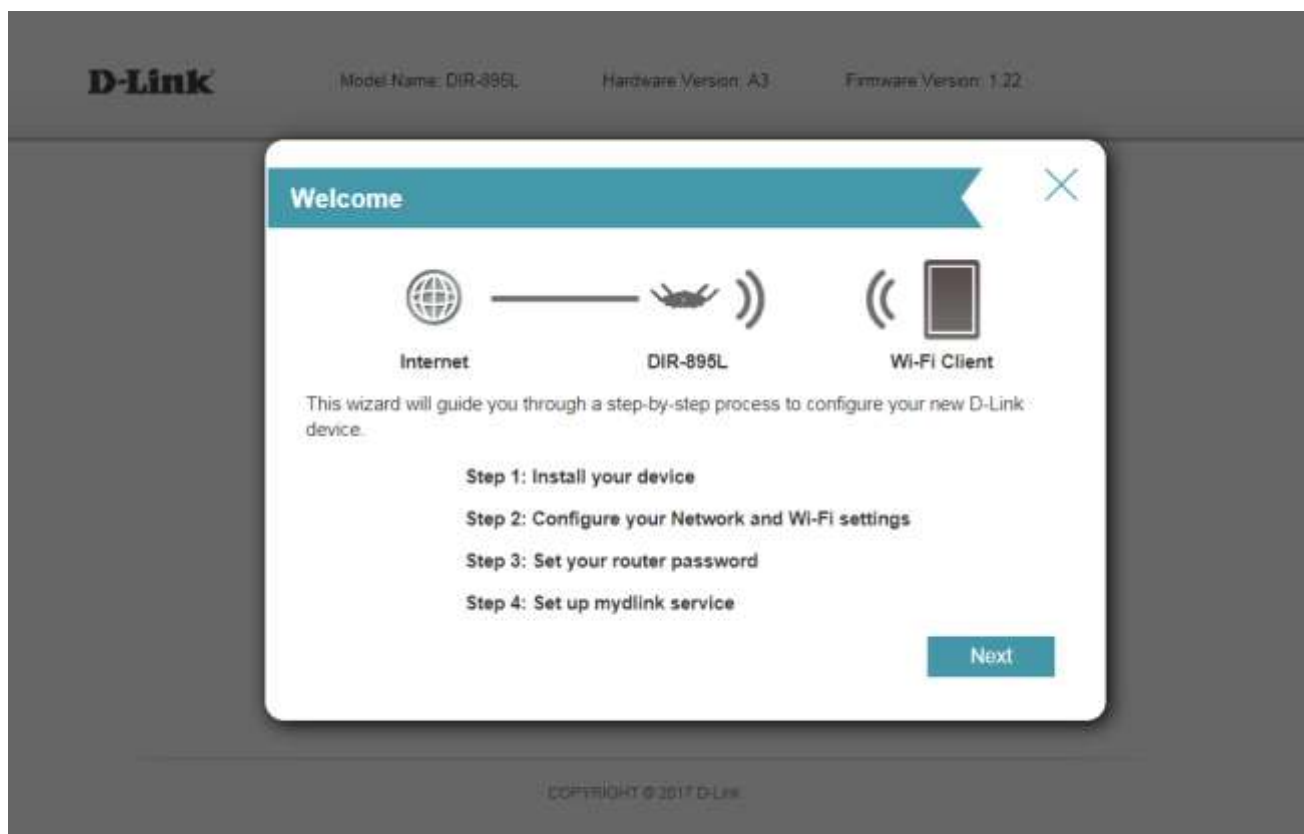


3. Settings > Wizard

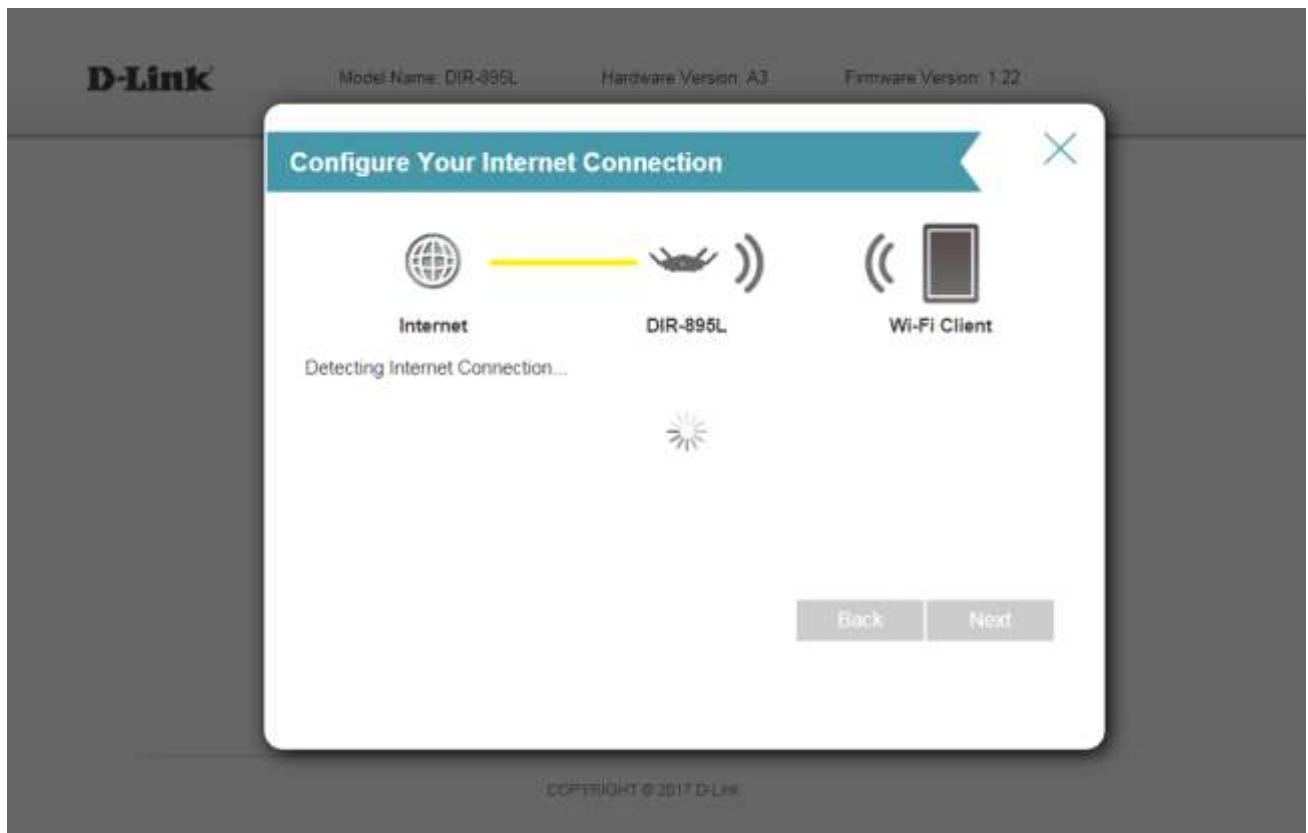


4. Welcome page will show a Wizard to configure device

- **First setup** or default setting, it'll show a pop up Wizard, if don't want to follow the wizard, press a cross sign at the top right
- If want to follow the Wizard, press **Next**

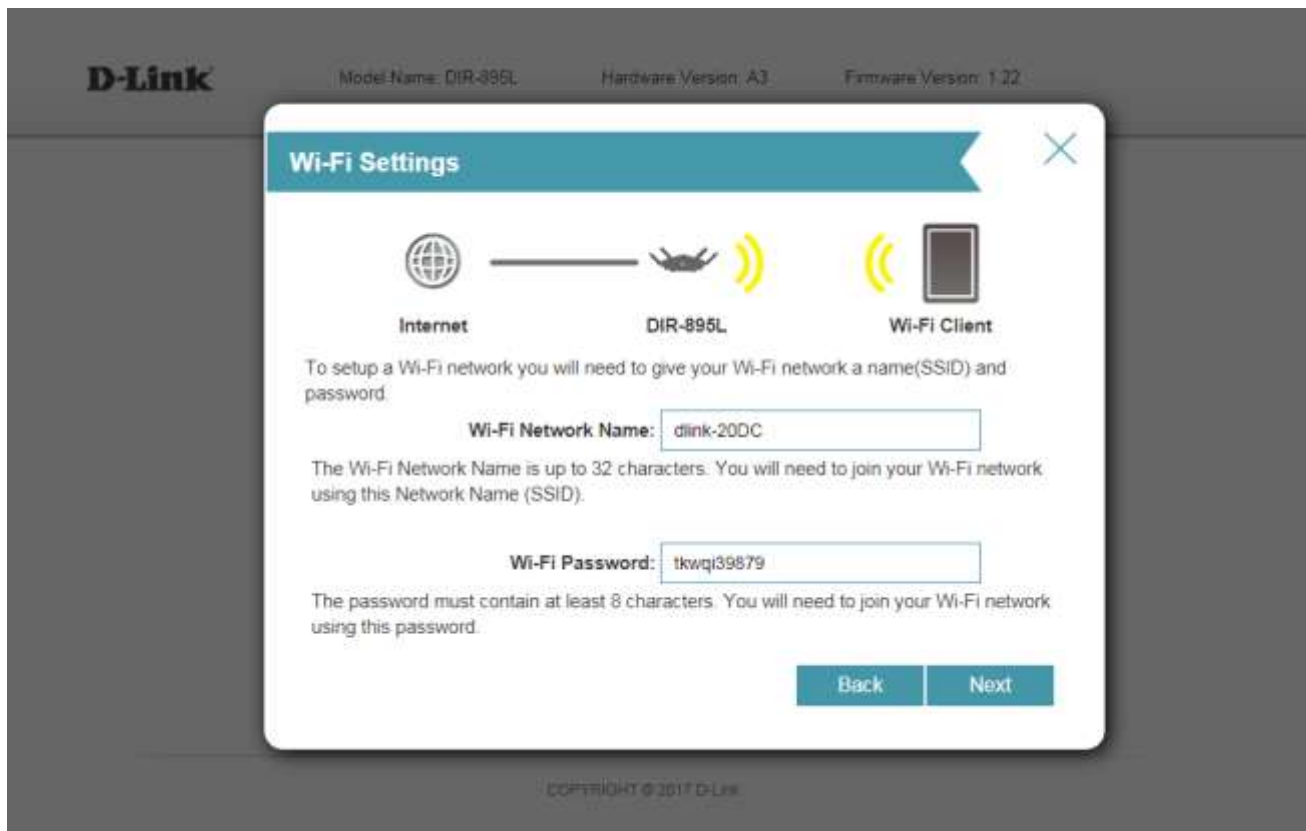


- 5. Internet connection from main modem > if detect Internet network from main modem, it'll lead to next page



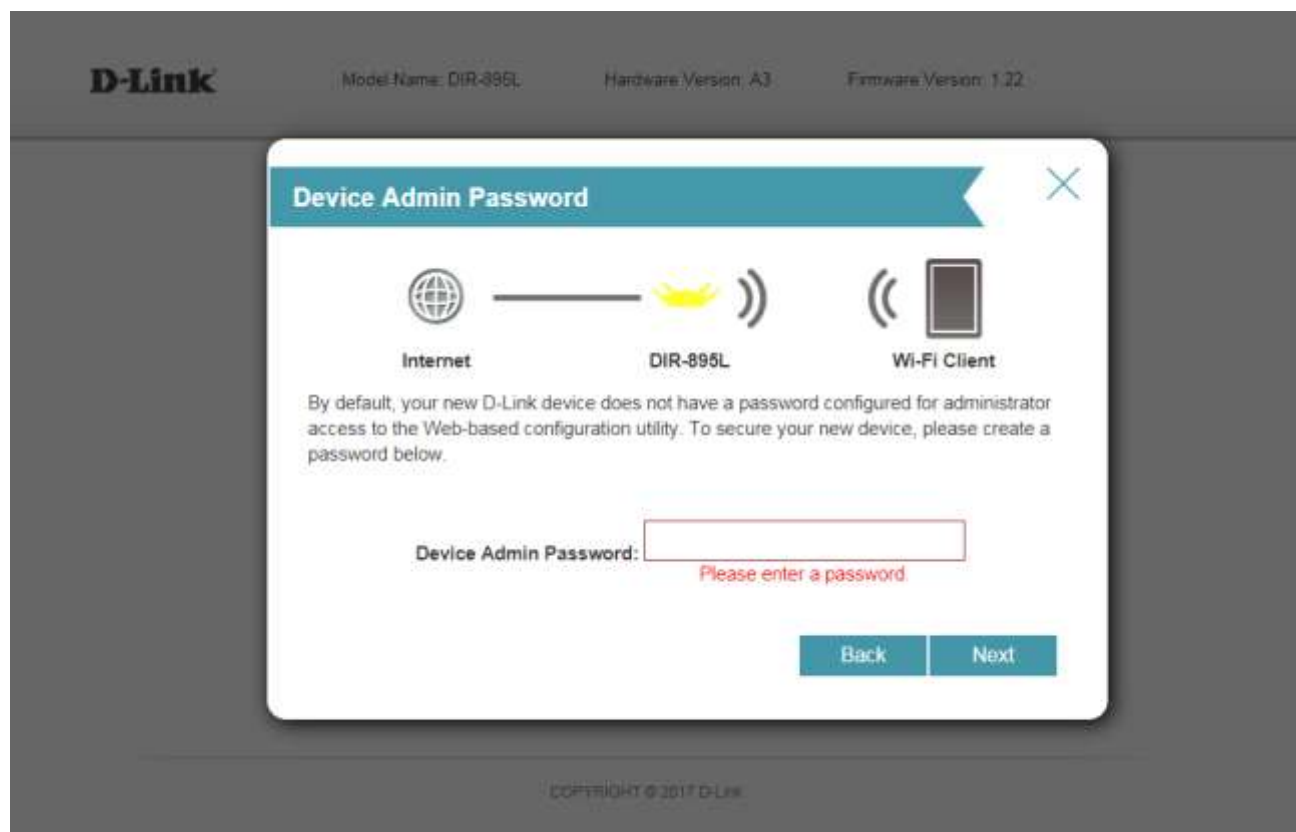
6. Wi-Fi Settings

- **Wi-Fi Network Name** : enter preferred name (Wi-Fi setting as per Wizard, Smart Connect is enabled, it'll show only 1 SSID and AP will auto choose for device to get 2.4GHz or 5GHz)
- **Wi-Fi Password** : contain at least 8 characters but not more than 32 characters
- Once completed, press **Next**

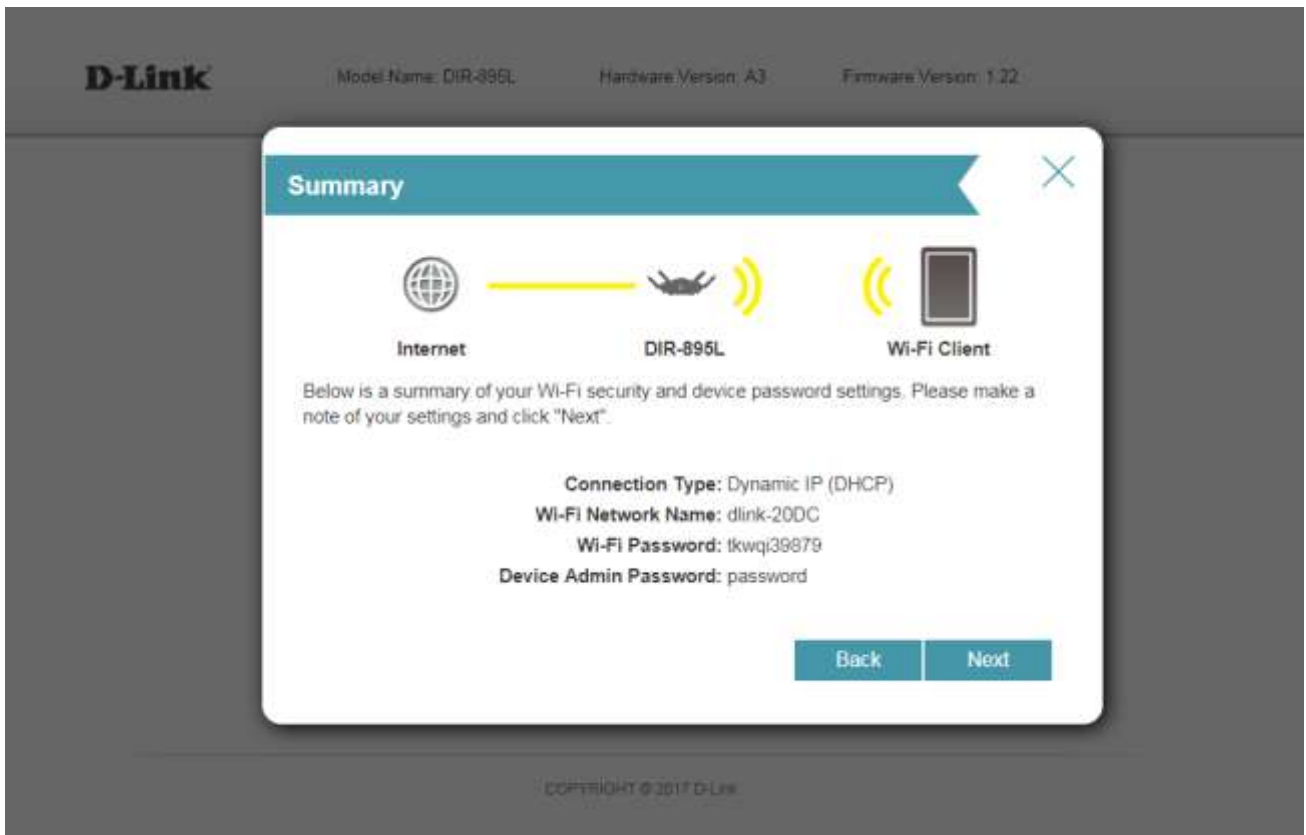


7. Device Admin Password

- Set up as per Wizard needs to set new password only
- If want to use old password, don't enter any password, select a cross sign and then manually set
- Once completed, press **Next**



8. Summary page > press Next




9. mydlink Registration : to set D-Link Account to use Cloud of D-Link

- if don't want to register, press **Skip**
- if want to register mydlink , contact D-link Technical Hotline 02-035-7200 Monday-Friday 9.00- 18.00 hrs. (Thai) , 18.00-9.00 hrs. (English), Saturday-Sunday 24 hours (English)

D-Link Model Name: DIR-395L Hardware Version: A3 Firmware Version: 1.22

mydlink Registration



This device is mydlink-enabled, which allows you to remotely monitor and manage your network through the mydlink.com website, or through the mydlink mobile app. You can register this device with your existing mydlink account. If you do not have one, you can create one now.

Do you have an existing mydlink account??

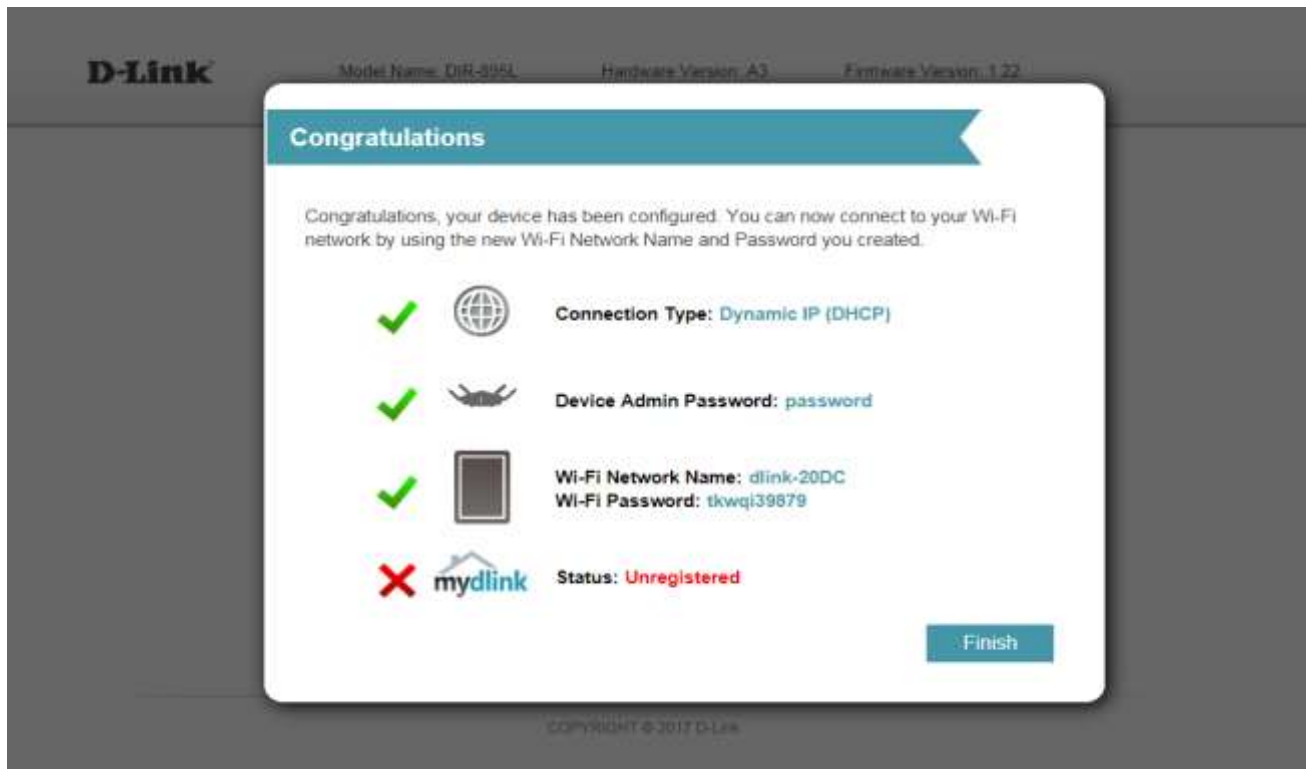
Yes, I have a mydlink account.

No, I want to create a new mydlink account.

Skip Next

COPYRIGHT © 2017 D-Link

10. Congratulations : summery page, press Finish



11. Wait AP to save the setup and Reboot process around 25 seconds

