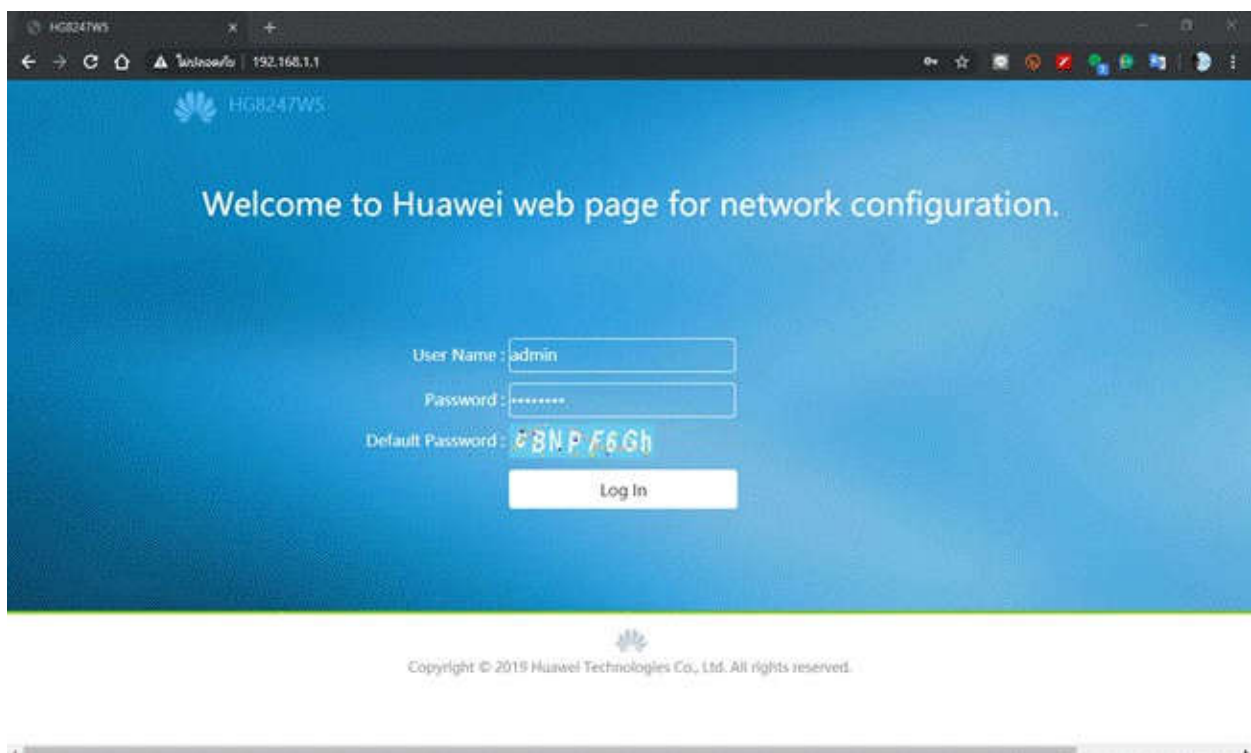


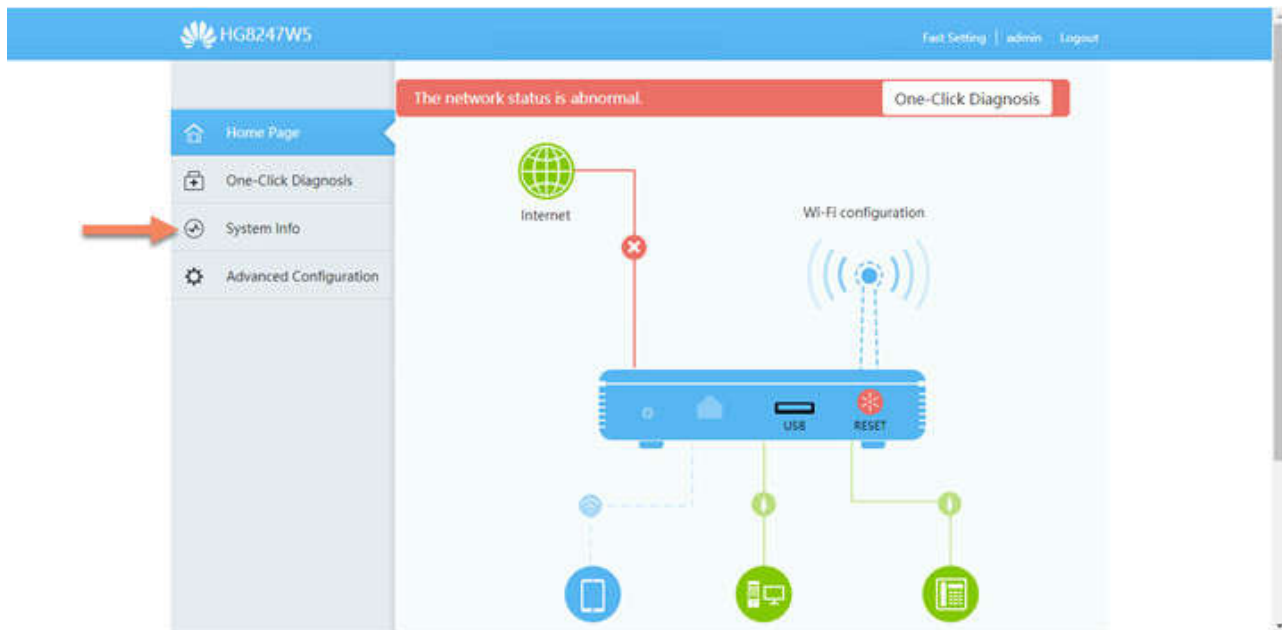
How to check Neighbor Wi-Fi Network for HUAWEI HG8247W5

1. Type 192.168.1.1 and press Enter

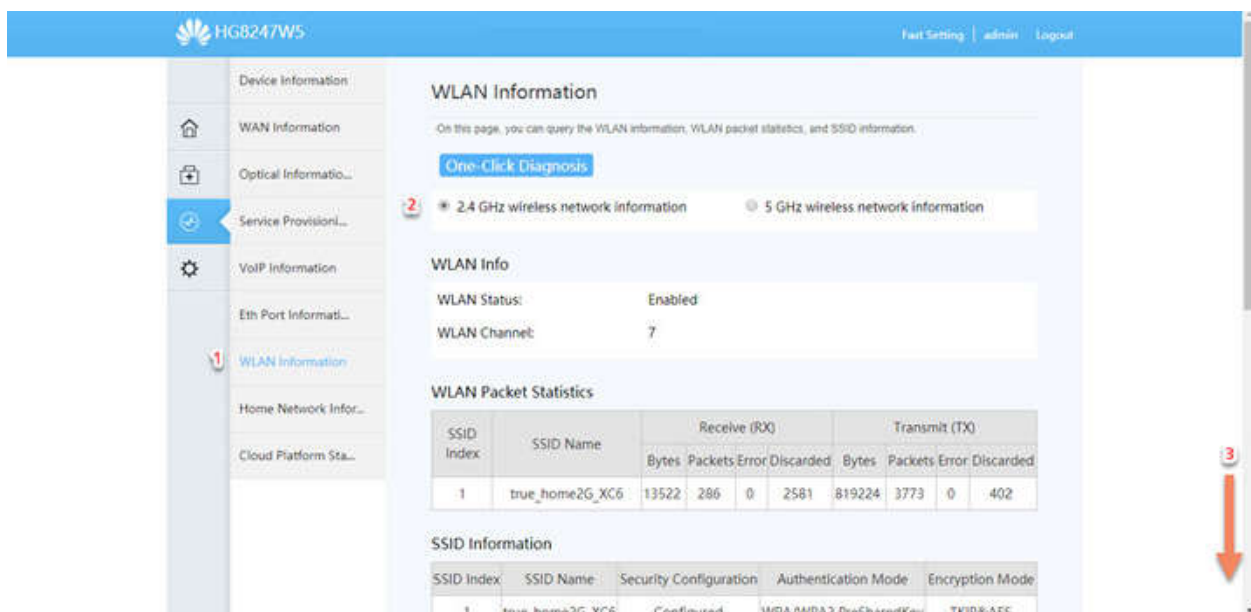
- User Name = admin
- Password = enter letters shown in Default Password
- Press Log In



2. At Status, select System Info



3. WLAN Information > choose wireless network to check > and then go down



4. At Neighbor AP Information, press Query

Cloud Platform STA...

Index	SSID Name	Bytes	Packets	Error	Discarded	Bytes	Packets	Error	Discarded
1	true_home2G_XC6	13522	286	0	2581	819224	3773	0	402

SSID Information

SSID Index	SSID Name	Security Configuration	Authentication Mode	Encryption Mode
1	true_home2G_XC6	Configured	WPA/WPA2 PreSharedKey	TKIP&AES

STA Information

Query

MAC Address	SSID Name	Connection Duration (s)	Sending Rate (Mbit/s)	Receiving Rate (Mbit/s)	Signal Strength (dBm)	Noise (dBm)	Signal-to-Noise Ratio (dB)	Signal Quality (dBm)	Antenna Num	11k	11v	Dual
-------------	-----------	-------------------------	-----------------------	-------------------------	-----------------------	-------------	----------------------------	----------------------	-------------	-----	-----	------

Neighbor AP Information

Query Note: Querying neighbor AP information may disconnect all STA connections.

SSID Name	MAC Address	Network Type	Channel	Signal Strength (dBm)	Noise (dBm)	DTIM Interval	Beacon Period (ms)	Authentication Mode	Working Mode	Max. Rate (Mbit/s)
-----------	-------------	--------------	---------	-----------------------	-------------	---------------	--------------------	---------------------	--------------	--------------------

5. A table will show List of neighbor Wi-Fi network in that area

Neighbor AP Information

Query Note: Querying neighbor AP information may disconnect all STA connections.

Number of neighbor APs: 44

SSID Name	MAC Address	Network Type	Channel	Signal Strength (dBm)	Noise (dBm)	DTIM Interval	Beacon Period (ms)	Authentication Mode
--	00:C8:8B:C1:AD:D1	AP	1	-74(Normal)	-90	1	102	WPA PSK-
--	00:C8:8B:E8:FC:E2	AP	1	-80(Weak)	-90	1	102	WPA PSK-
.@ TRUEWIFI	00:C8:8B:9C:DE:C0	AP	1	-67(Weaker)	-90	1	102	OPEN
.@ TRUEWIFI	00:C8:8B:E8:FC:E0	AP	1	-80(Weak)	-90	1	102	OPEN
.@ TRUEWIFI	00:C8:8B:C1:AD:D0	AP	1	-74(Normal)	-90	1	102	OPEN
.@ TrueMove H	00:C8:8B:C1:AD:D2	AP	1	-74(Normal)	-90	1	102	WPA
.@ 3BB_WIFI	D6:CA:5D:C6:DA:C2	AP	1	-75(Weak)	-90	0	100	OPEN
.@ 3BB_WIFI	8A:DC:96:3D:7B:8C	AP	1	-81(Weaker)	-90	1	100	OPEN
@ 3BB_WIFI	D4:CA:6D:C6:DA:C0	AP	1	-74(Normal)	-90	0	100	OPEN
APSBKK-0106	D6:CA:5D:C6:DA:C0	AP	1	-75(Weak)	-90	0	100	OPEN
APSBKK-0106-E3	9A:DC:96:3D:7B:8C	AP	1	-81(Weaker)	-90	0	100	OPEN
...	WPA