

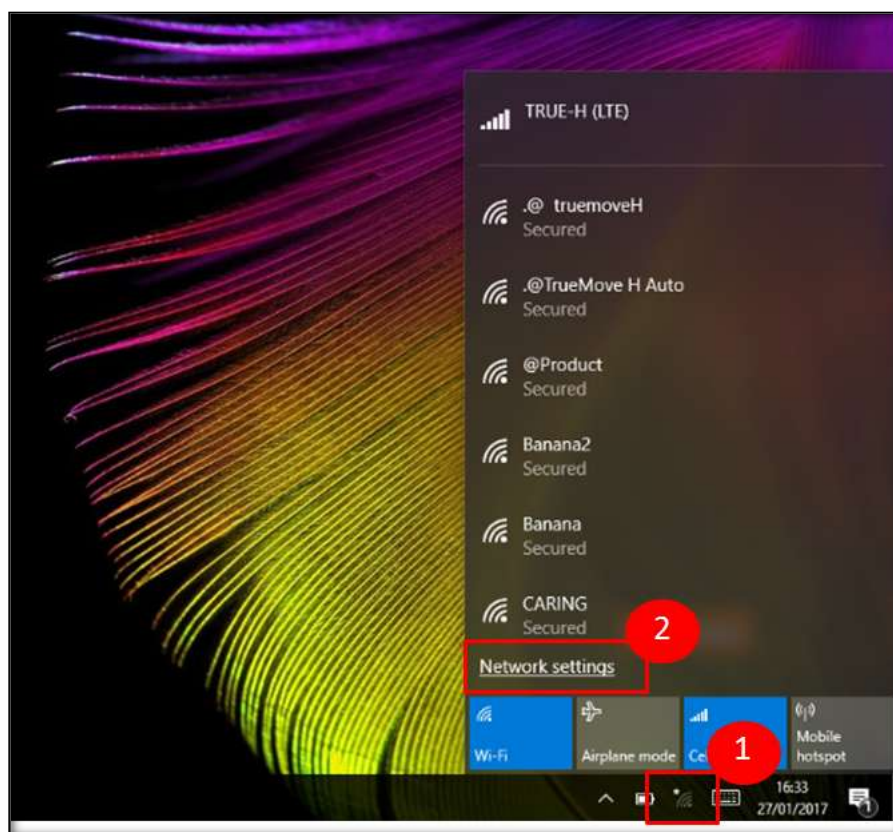
How to Setup APN on Notebook True Lenovo MIIX310 LTE

This setting is applicable to Notebook True Lenovo MIIX310 LTE that can insert SIM Card into Notebook. This Notebook should install Windows 10 Home

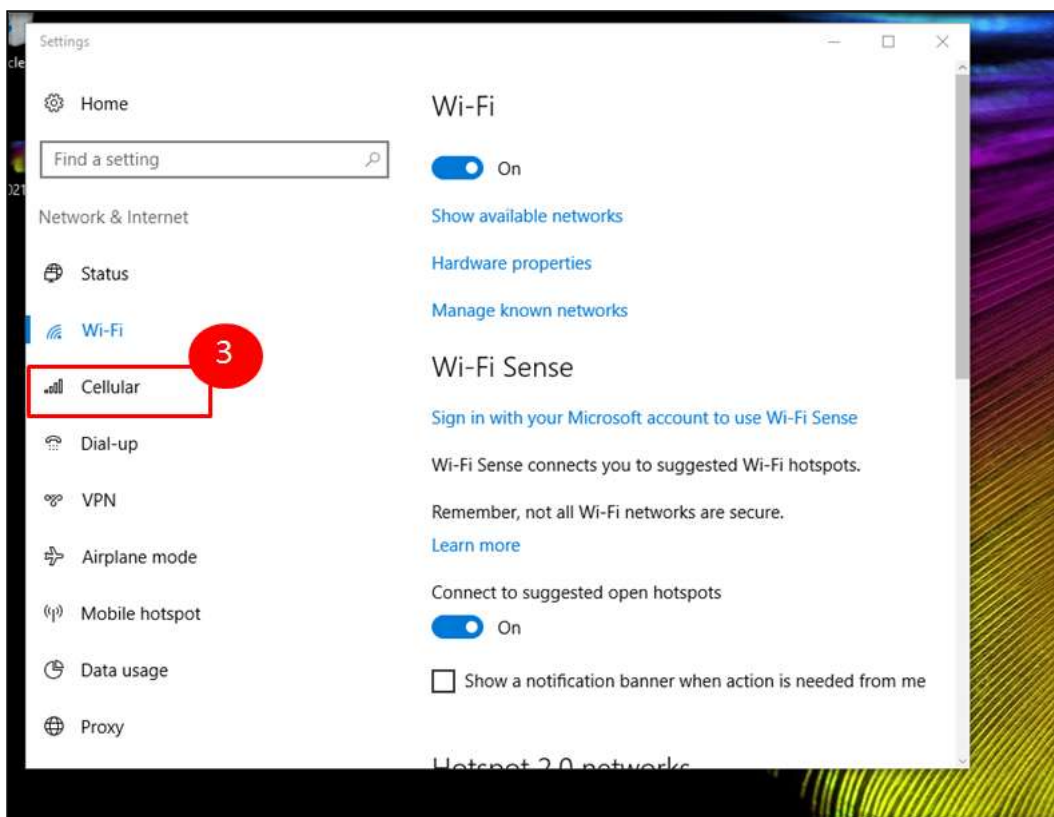
1. Insert **SIM Card into Notebook**, on screen will show Windows main page

Settings

- 1) Tap network signal at bottom right (for Network ordering)
- 2) And then tap **Network settings**

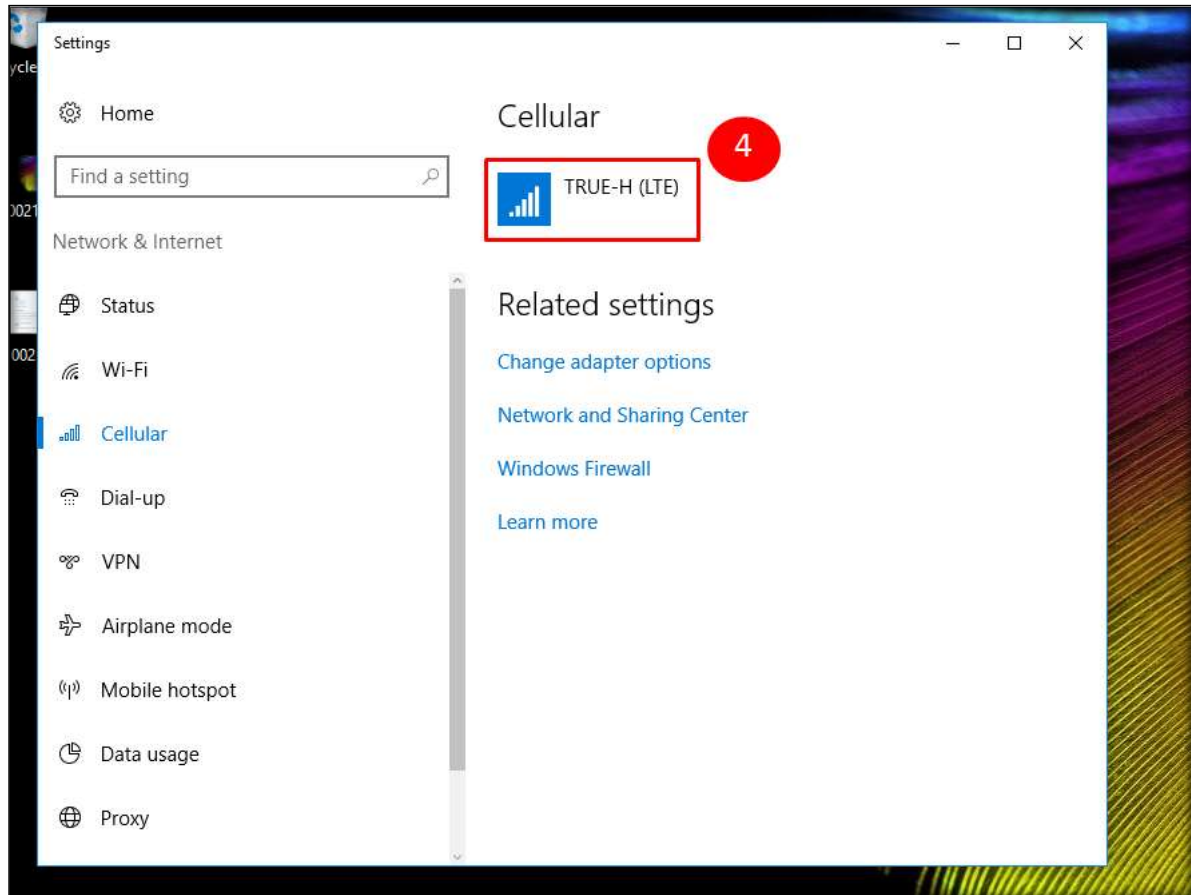


3) On the left => tap Cellular

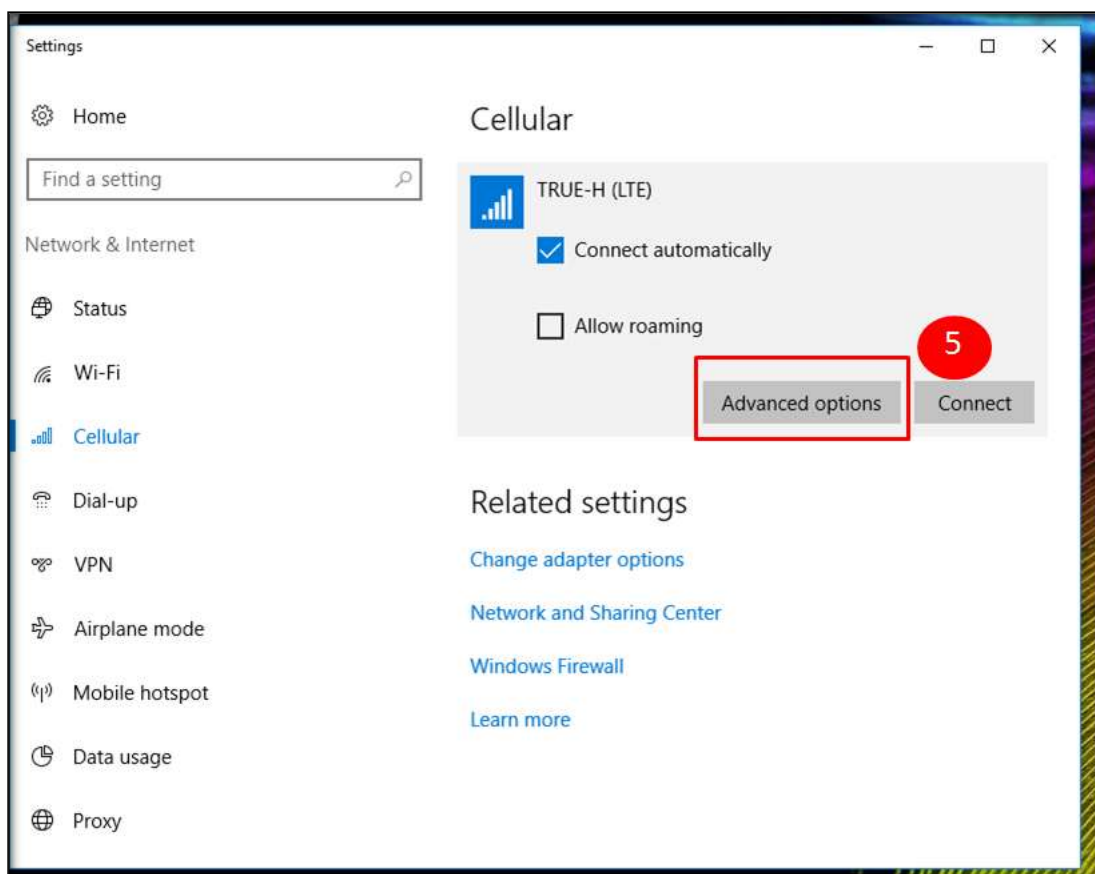


4) On the right, it will show TRUE-H (LTE) network signal => tap here

* LTE = connect 4G



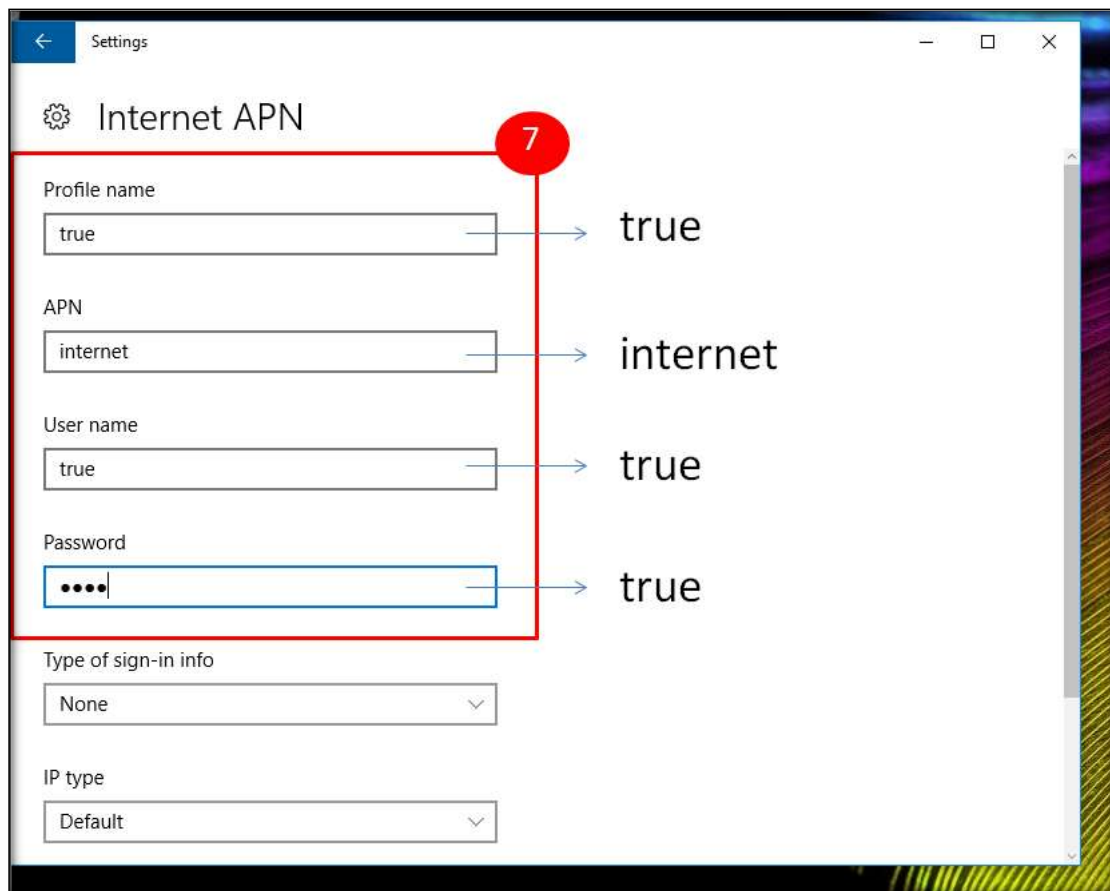
5) Sub menu => tap **Advanced options**



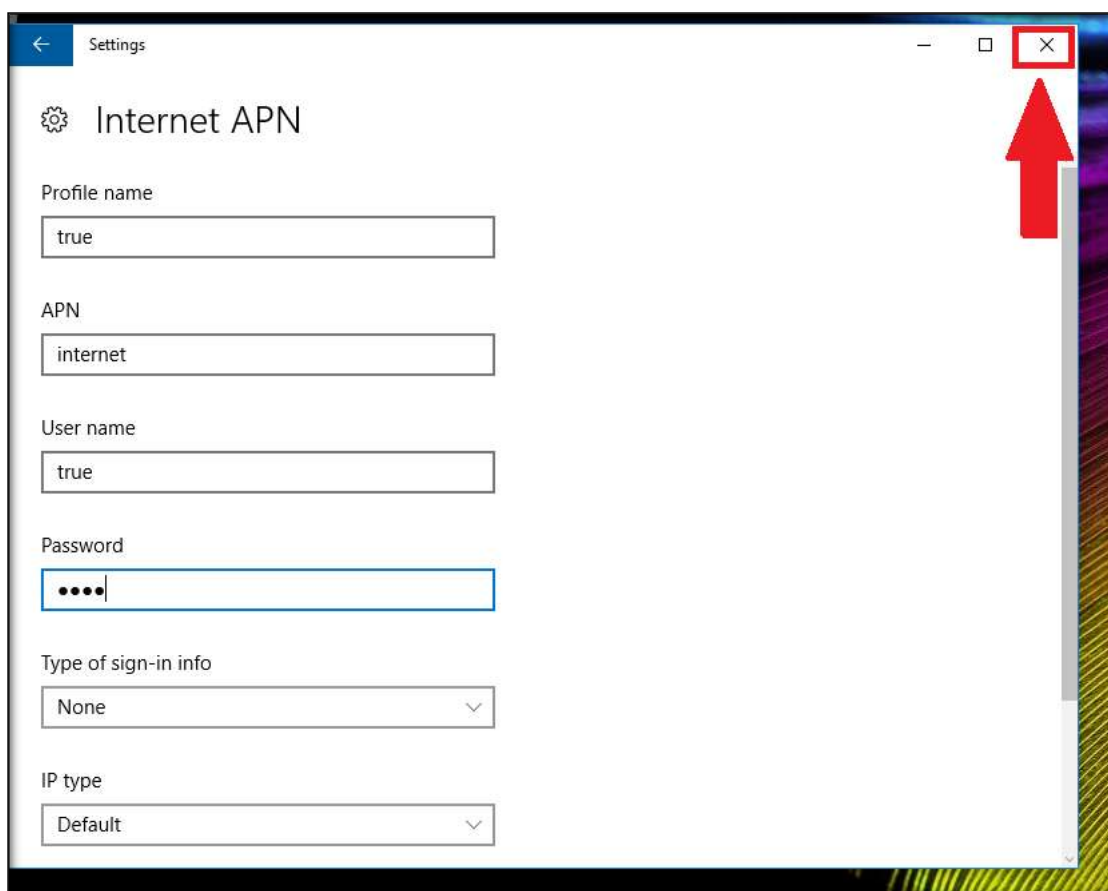
6) **Internet APN** page will appear for setting APN

7) Enter following information :

- **Profile name** = true
- **APN** = internet
- **User name** = true
- **Password** = true



8) Once completed => tap X at top right corner to close window



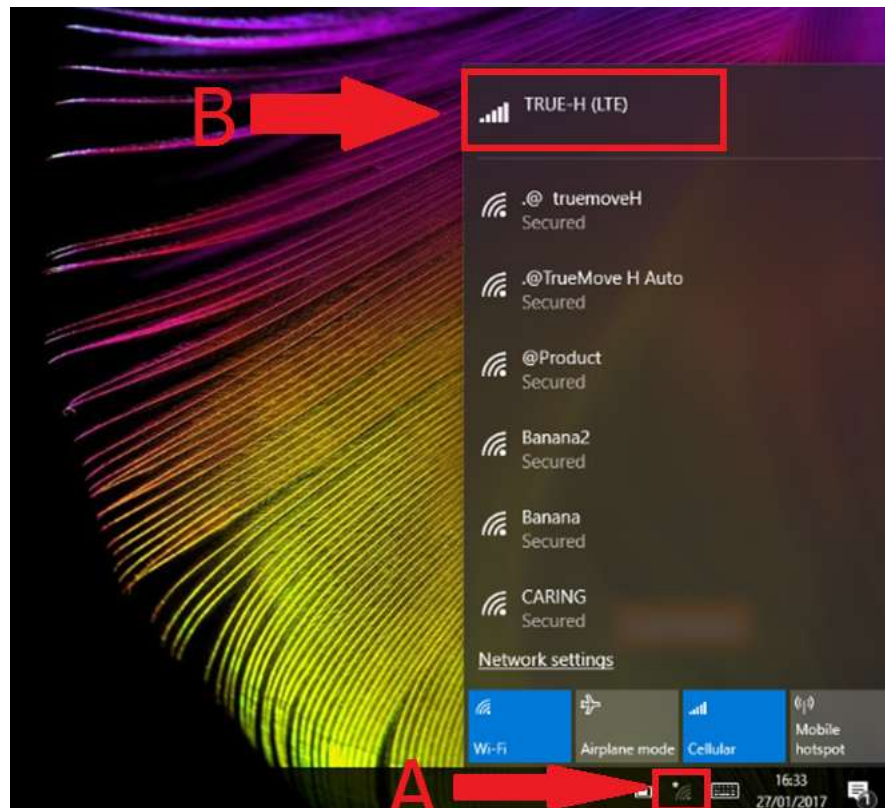
How to use

2. Back to main page

A) Tap network signal at bottom right again

B) It'll show **TRUE-H (LTE) mobile network**

Wait for the connection : => after close the window, system will auto connect



3. Once connected, it will show **Connected status at TRUE-H (LTE)**

Test using the Internet on Notebook True Lenovo MIIX310 LTE

