

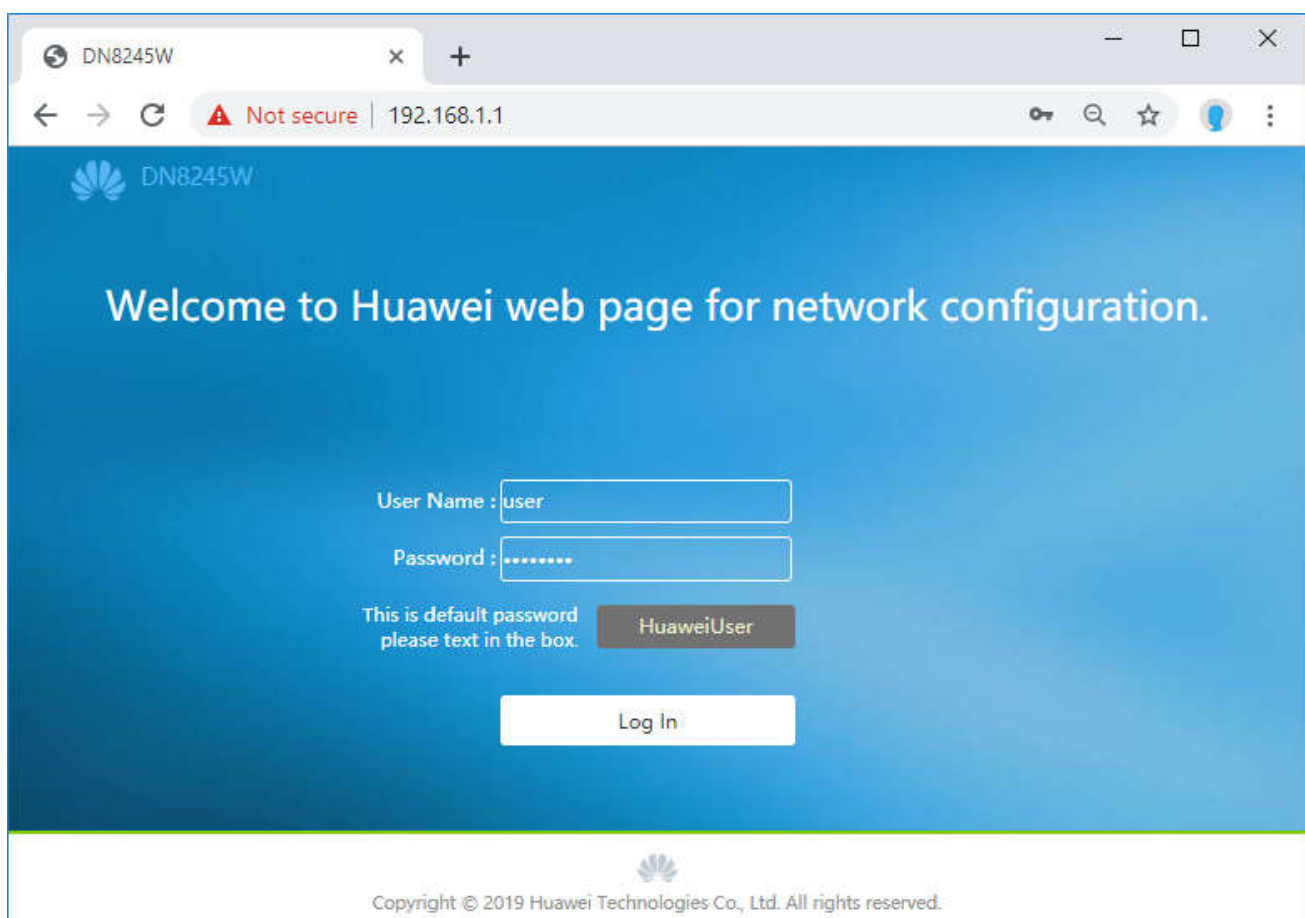
## Set up Wi-Fi on HUAWEI DN8245W

### Log In Configuration page

Type 192.168.1.1 at Browser and press Enter, User = user,

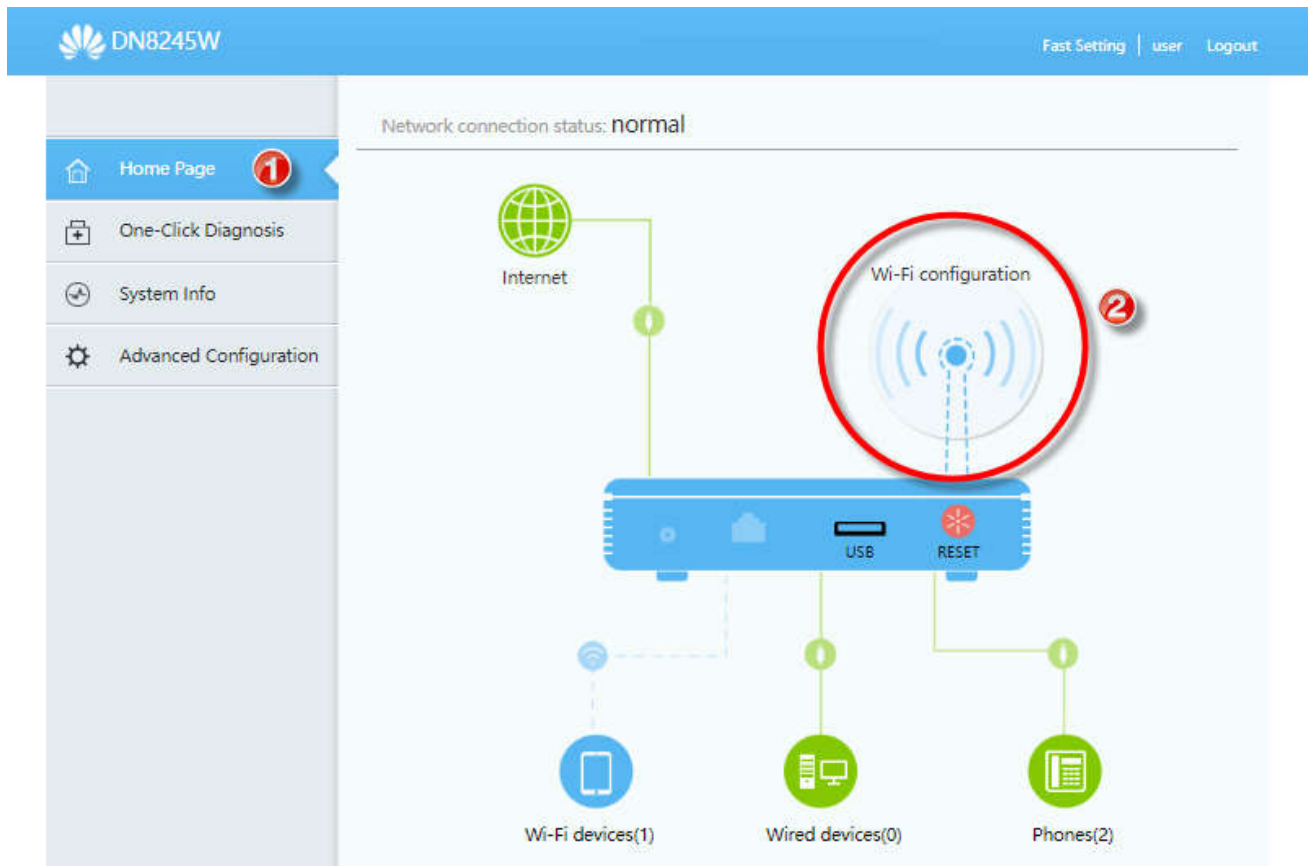
Password = HuaweiUser then press Log In

(For first time Login, it's compelled to change the password and it should not be repeated with default password)



## Basic configuration

### 1. Click Home Page > Wi-Fi configuration



## 2. Wi-Fi settings

- Enable 2.4G/5G Network : button to enable/ disable Wi-Fi signal
- Wi-Fi Name : Wi-Fi name (can reset)
- Password : password must contain 8 – 63 characters
- Once completed, press Save

Wi-Fi Setting

Enable 2.4G Network:  ON

Wi-Fi Name:  (1-32 characters)

Password:   Hide (8-63 characters or 64 hexadecimal characters)

Hide the network

---

Enable 5G Network:  ON

Wi-Fi Name:  (1-32 characters)

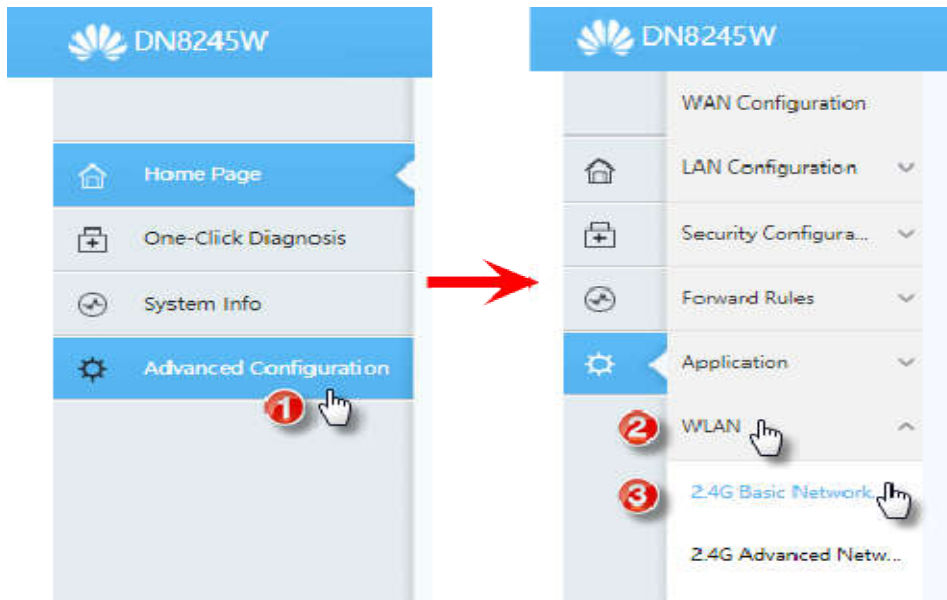
Password:   Hide (8-63 characters or 64 hexadecimal characters)

Hide the network

## Advanced Configuration

### 2.4G Wi-Fi Basic Configuration

#### 1. Advanced Configuration > WLAN > 2.4G Basic Network Settings



#### 2. Wi-Fi name and other settings

- Enable WLAN : click a check to enable Wi-Fi, remove a check to disable
- SSID Name : enter Wi-Fi name (1-32 characters)
- Enable SSID : click a check mark
- Broadcast SSID : click a check mark, if want to hide network name, remove a check mark
- When finished, press Apply

## 2.4G Basic Network Settings

On this page, you can set the basic parameters of 2.4 GHz wireless network(When the 2.4 GHz wireless network is disabled, this page is blank).

**⚠ Caution:**

1. Wireless network services may be interrupted temporarily after you modify wireless network parameters.
2. It is recommended that you use the WPA2 or WPA/WPA2 authentication mode for security purposes.

**Enable WLAN** 1

SSID Index	SSID Name	SSID Status	Number of Associated Devices	Broadcast SSID	Security Configuration
<input type="checkbox"/> 1	HUAWEI-Vector-2.4G	Enabled	32	Enabled	Configured

### SSID Configuration Details

SSID Name: 2  \* (1-32 characters)

Enable SSID: 3

Number of Associated Devices:  \* (1-32)

Broadcast SSID: 4

Enable WMM:

Authentication Mode:  ▼

Encryption Mode:  ▼

WPA PreSharedKey:   Hide \* (8-63 characters or 64 hexadecimal characters)

WPA Group Key Regeneration Interval:  \*(600-86400s)

5

### 3. Set Password for 2.4G WiFi

#### 3.1. WPA / WPA2 / WPA/WPA2 PreSharedKey

- Authentication Mode : WPA / WPA2 / WPA/WPA2 PreSharedKey  
this setting is suitable for new device and it's the most secure mode
- Encryption Mode : TKIP&AES , Default setting works with this Authentication Mode
- WPA PreSharedKey : password must contain 8 – 63 characters
- When finished, press Apply

The screenshot displays the 'SSID Configuration Details' interface. The 'Authentication Mode' dropdown is set to 'WPA/WPA2 PreSharedK' (indicated by a red circle '1' and a red arrow pointing to a dropdown menu where 'WPA/WPA2 PreSharedKey' is highlighted in blue). The 'Encryption Mode' dropdown is set to 'TKIP&AES' (indicated by a red circle '2' and a red arrow pointing to a dropdown menu where 'TKIP&AES' is highlighted in blue). The 'WPA PreSharedKey' field is filled with dots (indicated by a red circle '3'). The 'Apply' button is highlighted in blue (indicated by a red circle '4').

SSID Configuration Details

SSID Name: HUAWEI-Vector-2.4 \* (1-32 characters)

Enable SSID:

Number of Associated Devices: 32 \* (1-32)

Broadcast SSID:

Enable WMM:

Authentication Mode: WPA/WPA2 PreSharedK

Encryption Mode: TKIP&AES

WPA PreSharedKey: .....  Hide \* (8-63 characters or 64 hexadecimal characters)

WPA Group Key Regeneration Interval: 1800 \*(600-86400s)

Apply Cancel

### 3.2. Open

- Authentication Mode : Open , if select this you can connect Wi-Fi, no password required but it's not secure
- Encryption Mode : None
- When finished, press Apply

The screenshot shows the 'SSID Configuration Details' dialog box. The 'Authentication Mode' dropdown is set to 'Open', and the 'Encryption Mode' dropdown is set to 'None'. A red dotted arrow points from the 'Open' option in the 'Authentication Mode' dropdown to the 'Open' option in the expanded dropdown menu. The 'Apply' button is highlighted with a red circle and the number 3.

SSID Configuration Details

SSID Name:  \* (1-32 characters)

Enable SSID:

Number of Associated Devices:  \* (1-32)

Broadcast SSID:

Enable WMM:

Authentication Mode:  ▼

Encryption Mode:  ▼

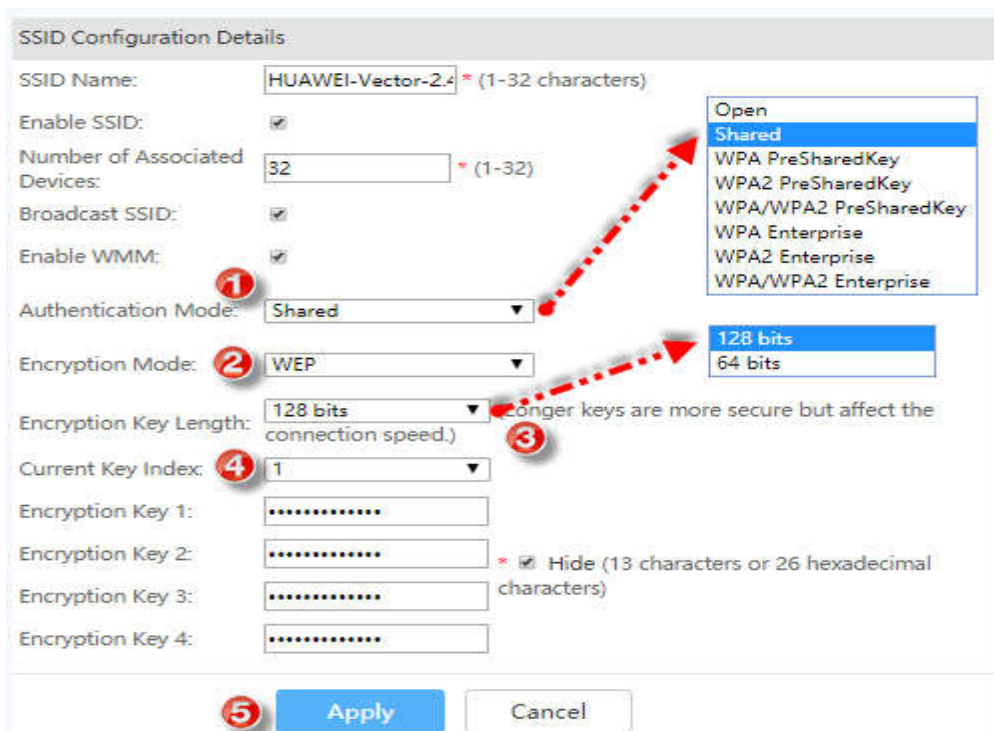
Open  
Shared  
WPA PreSharedKey  
WPA2 PreSharedKey  
WPA/WPA2 PreSharedKey  
WPA Enterprise  
WPA2 Enterprise  
WPA/WPA2 Enterprise

3 Apply



### 3.3. Shared (WEP)

- Authentication Mode : Shared  
 this setting is suitable for old version device or some device e.g.  
 printer, smart tv and some smart phone
- Encryption Mode : choose WEP, Default setting works with this  
 Authentication Mode
- Encryption Key Length / Encryption Key 1:
  - 128bits : enter 13 characters (a-z, A-Z , 0-9)
  - 128bits : enter 26 characters (a-f, A-F , 0-9)
  - 64bits : enter 5 characters (a-z, A-Z , 0-9)
  - 64bits : enter 10 characters (a-f, A-F , 0-9)
- Current Key Index : select 1
- When finished, press Apply

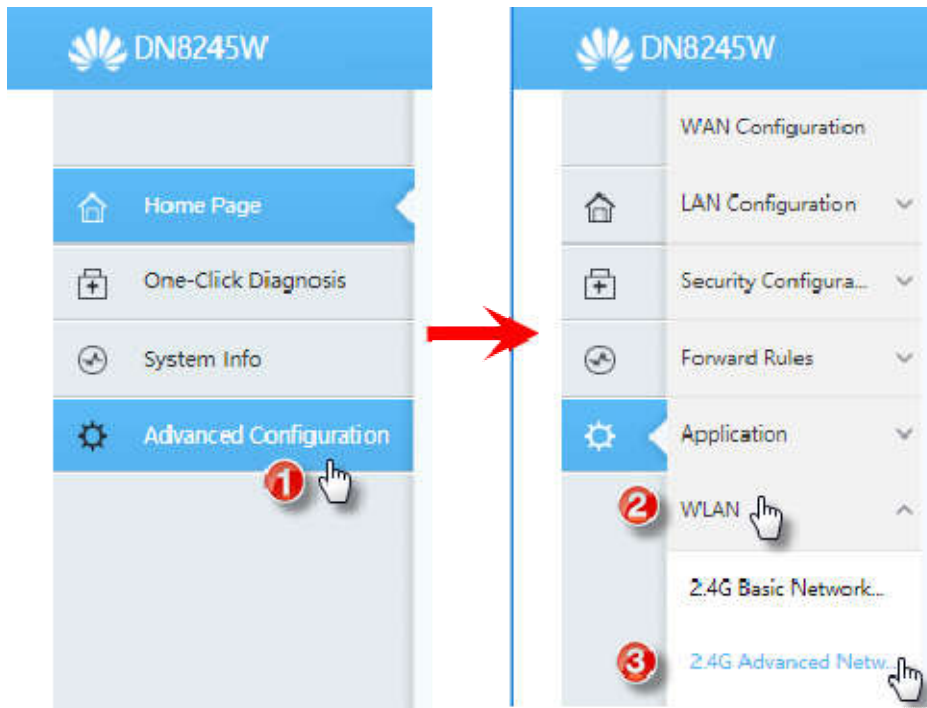




## Advanced Configuration for 2.4 G Wi-Fi

### 1. Advanced Configuration > WLAN > 2.4G Advanced Network

#### Settings



## 2. Advanced Configuration

- TX Power : adjust Wi-Fi network strength, by default is 100%
- Channel : Automatic , if Router is turned off/ on, the channel will be changed to the best channel at that moment, can manually set by choosing the preferred Channel
- Channel Width : add channel width that will increase Sync Speed but the connected device must support 40Mhz so it can work
- Mode : select 802.11b/g/n , this parameter supports all types
- Once completed, press Apply

**2.4G Advanced Network Settings**

On this page, you can set the advanced parameters of 2.4 GHz wireless network(When the 2.4 GHz wireless network is disabled, this page is blank).

**⚠ Caution:**  
Wireless network services may be interrupted temporarily after you modify wireless network parameters.

**Advanced Configuration**

TX Power:  ▼

Channel:  ▼

Channel Width:  ▼

Mode:  ▼

DTIM Period:  (1-255, default: 1)

Beacon Period:  (20-1000 ms, default: 100)

RTS Threshold:  (1-2346 bytes, default: 2346)

Fragmentation Threshold:  (256-2346 bytes, default: 2346)

100%

80%

60%

40%

20%

Automatic

1

2

3

4

5

6

7

8

9

10

11

Auto 20/40 MHz

20 MHz

40 MHz

802.11b

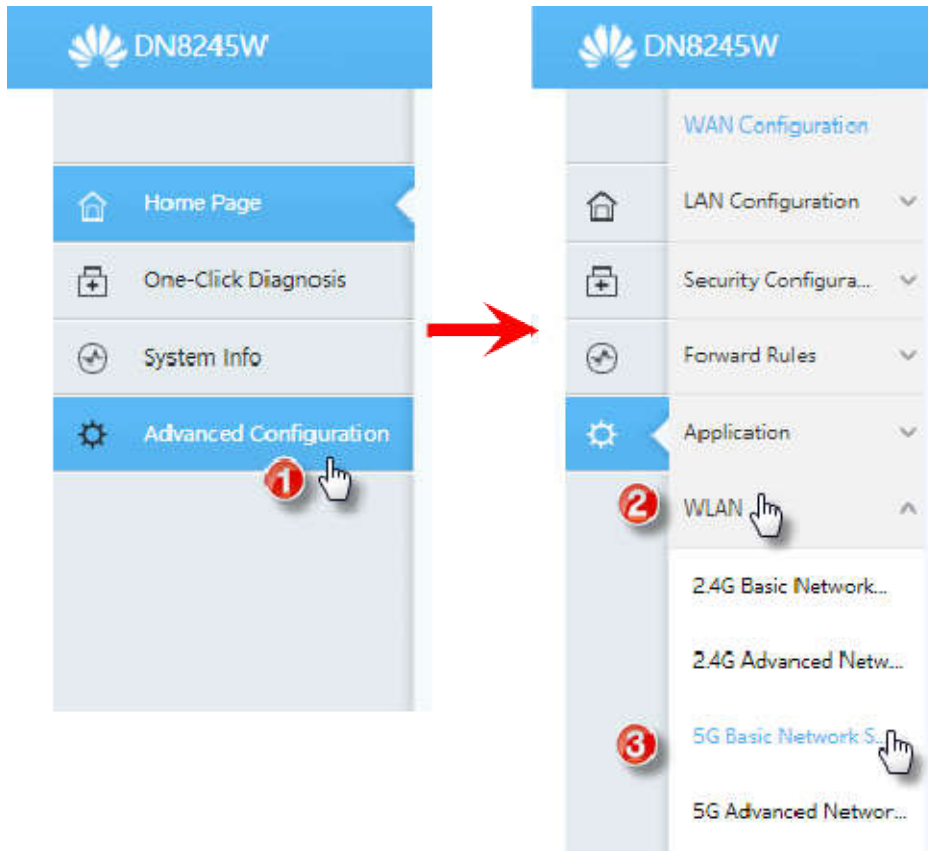
802.11g

802.11b/g

802.11b/g/n

## 5G Wi-Fi Basic Configuration

### 1. Advanced Configuration > WLAN>5G Basic Network Settings



## 2. Set Wi-Fi name and other basic configuration

- Enable WLAN : click a check to enable Wi-Fi, remove a check when want to disable
- SSID Name : set Wi-Fi name contains 1-32 characters
- Enable SSID : click a check
- Broadcast SSID : click a check, to hide Wi-Fi name, remove a check
- When finished, press Apply

### 5G Basic Network Settings

On this page, you can set the basic parameters of 5 GHz wireless network(When the 5 GHz wireless network is disabled, this page is blank).

⚠ Caution:

1. Wireless network services may be interrupted temporarily after you modify wireless network parameters.
2. It is recommended that you use the WPA2 or WPA/WPA2 authentication mode for security purposes.

Enable WLAN **1**

New Delete

SSID Index	SSID Name	SSID Status	Number of Associated Devices	Broadcast SSID	Security Configuration
<input type="checkbox"/> 5	HUAWEI-Vector-5G	Enabled	32	Enabled	Configured

#### SSID Configuration Details

SSID Name: **2** HUAWEI-Vector-5G \* (1-32 characters)

Enable SSID: **3**

Number of Associated Devices: 32 \* (1-32)

Broadcast SSID: **4**

Enable WMM:

Authentication Mode: WPA/WPA2 PreSharedK ▼

Encryption Mode: TKIP&AES ▼

WPA PreSharedKey: .....  Hide \* (8-63 characters or 64 hexadecimal characters)

WPA Group Key Regeneration Interval: 1800 \*(600-86400s)

**5** Apply Cancel

### 3. Set Password for 5G Wi-Fi

#### 3.1. WPA / WPA2 / WPA/WPA2 PreSharedKey

- Authentication Mode : WPA / WPA2 / WPA/WPA2 PreSharedKey  
this mode is suitable for new device that is the most secure
- Encryption Mode : select TKIP&AES , Default setting works with this Authentication Mode
- WPA PreSharedKey : set password contains 8-63 characters
- When finished, press Apply

SSID Configuration Details

SSID Name:  \* (1-32 characters)

Enable SSID:

Number of Associated Devices:  \* (1-32)

Broadcast SSID:

Enable WMM:

Authentication Mode: 1  ▼

Encryption Mode: 2  ▼

WPA PreSharedKey: 3   Hide \* (8-63 characters or 64 hexadecimal characters)

WPA Group Key Regeneration Interval:  \*(600-86400s)

4

### 3.2. Open

- Authentication Mode : Open , if select this you can connect Wi-Fi, no password required but it's not secure
- Encryption Mode : None
- When finished, press Apply

SSID Configuration Details

SSID Name:  \* (1-32 characters)

Enable SSID:

Number of Associated Devices:  \* (1-32)

Broadcast SSID:

Enable WMM:

Authentication Mode:  ▼

Encryption Mode:  ▼

**1** **2** **3**

Apply Cancel

### 3.3. Shared (WEP)

- Authentication Mode : Shared
- This setting is suitable for old version of device or some device e.g. printer, smart tv and some smart phone
- Encryption Mode : choose WEP, Default setting works with this Authentication Mode
- Encryption Key Length / Encryption Key 1 :
- 128bits : enter password 13 characters (a-z, A-Z , 0-9)
- 128bits : enter password 26 characters (a-f, A-F , 0-9)



- 64bits : enter password 5 characters (a-z, A-Z , 0-9)
- 64bits : enter password 10 characters (a-f, A-F , 0-9)
- Current Key Index : select 1
- When finished, press Apply

SSID Configuration Details

SSID Name:  \* (1-32 characters)

Enable SSID:

Number of Associated Devices:  \* (1-32)

Broadcast SSID:

Enable WMM:

Authentication Mode: 

- Open
- Shared
- WPA PreSharedKey
- WPA2 PreSharedKey
- WPA/WPA2 PreSharedKey
- WPA Enterprise
- WPA2 Enterprise
- WPA/WPA2 Enterprise

Encryption Mode: 

- 128 bits
- 64 bits

Encryption Key Length:  (longer keys are more secure but affect the connection speed.)

Current Key Index:

Encryption Key 1:

Encryption Key 2:  \*  Hide (13 characters or 26 hexadecimal characters)

Encryption Key 3:

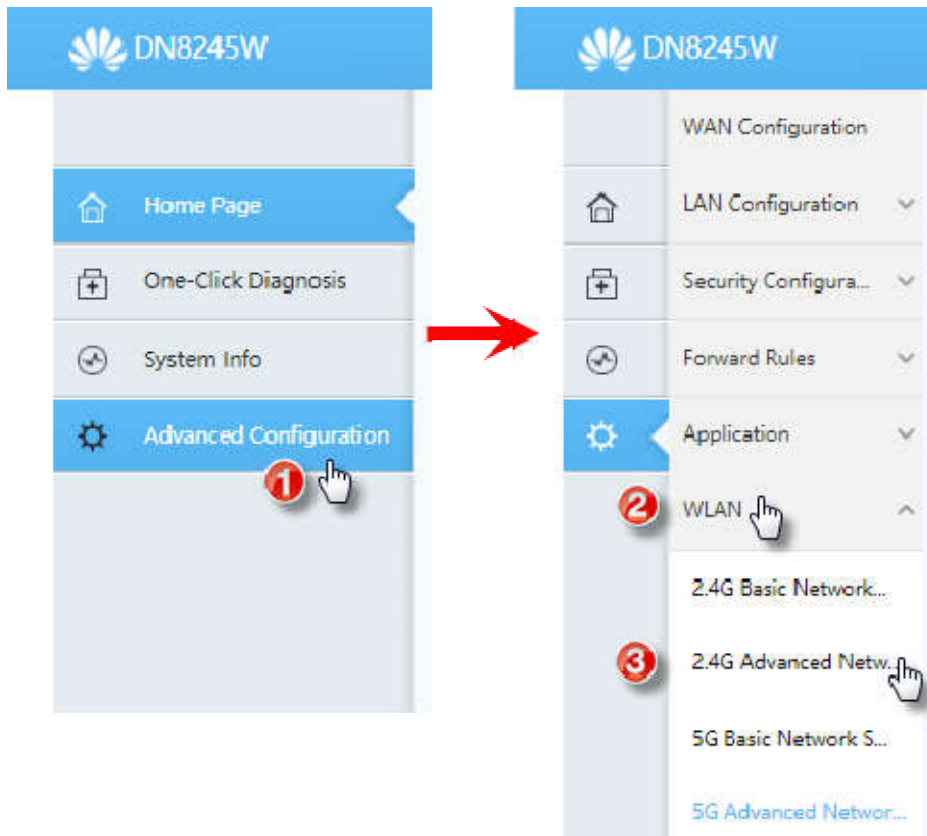
Encryption Key 4:



## Advanced Configuration for 5G Wi-Fi

### 1. Advanced Configuration > WLAN > 5G Advanced Network

#### Settings



## 2. Advanced configuration

- TX Power : adjust Wi-Fi network strength, by default is 100%
- Channel : Automatic , if Router is turned off/ on, the channel will be changed to the best channel at that moment, can manually set by choosing the preferred Channel
- Channel Width : add channel width that will increase Sync Speed
- Mode : select 802.11a/n/ac , this parameter supports all types
- When finished, press Apply

### 5G Advanced Network Settings

On this page, you can set the advanced parameters of 5 GHz wireless network(When the 5 GHz wireless network is disabled, this page is blank).

**⚠ Caution:**  
Wireless network services may be interrupted temporarily after you modify wireless network parameters.

#### Advanced Configuration

TX Power:	<input type="text" value="100%"/>	▼	
DFS Setting:	<input type="text" value="Without DFS"/>	▼	
Channel:	<input type="text" value="Automatic"/>	▼	
Channel Width:	<input type="text" value="Auto 20/40/80 MHz"/>	▼	
Mode:	<input type="text" value="802.11a/n/ac"/>	▼	
DTIM Period:	<input type="text" value="1"/>		(1-255, default: 1)
Beacon Period:	<input type="text" value="100"/>		(20-1000 ms, default: 100)
RTS Threshold:	<input type="text" value="2346"/>		(1-2346 bytes, default: 2346)
Fragmentation Threshold:	<input type="text" value="2346"/>		(256-2346 bytes, default: 2346)

100%

80%

60%

40%

20%

Automatic

36

40

44

48

149

153

157

161

Auto 20/40 MHz

20 MHz

40 MHz

Auto 20/40/80 MHz

802.11a

802.11a/n

802.11a/n/ac