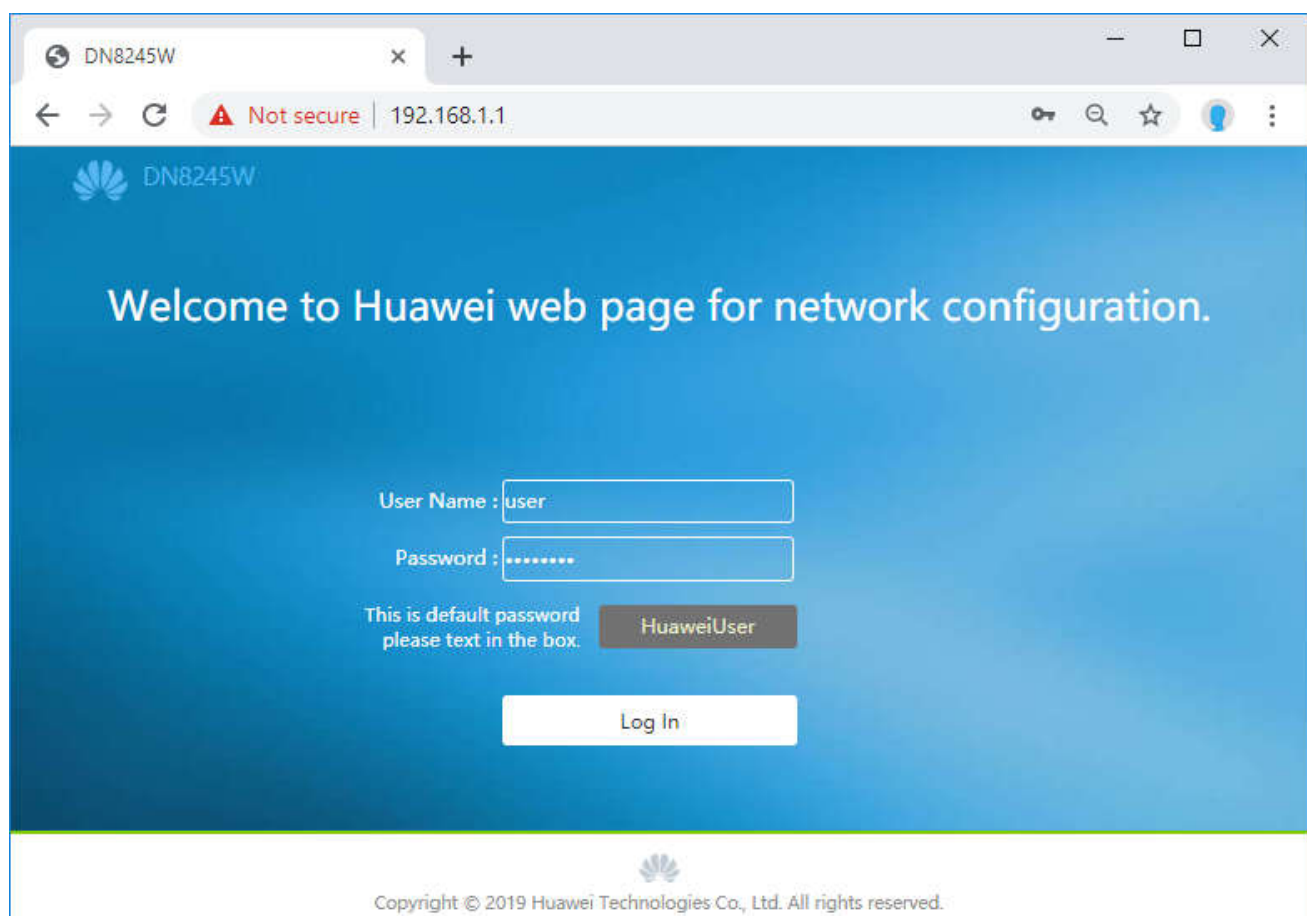


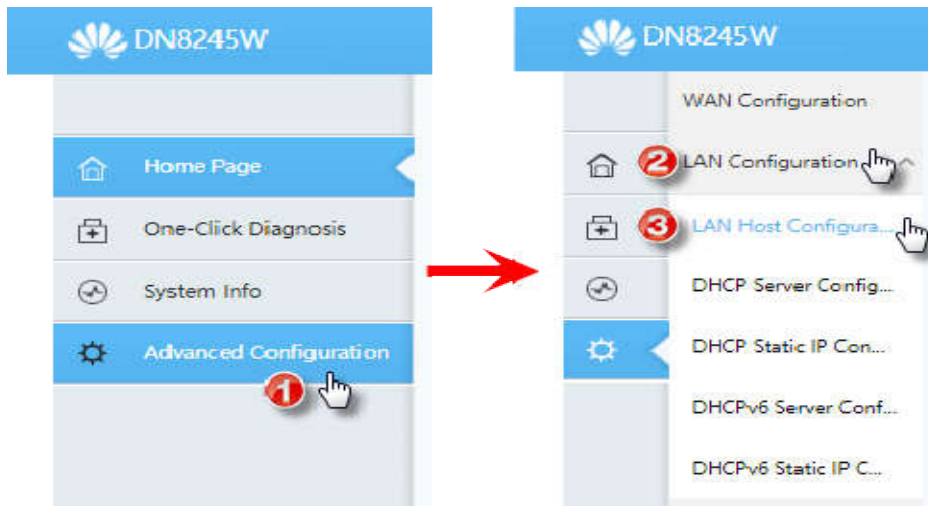
Set up LAN on HUAWEI DN8245W

1. Type 192.168.1.1 at Browser and press Enter, User = user,
Password = HuaweiUser
(For first time Login, it's compelled to change the password and it should not be repeated with default password)



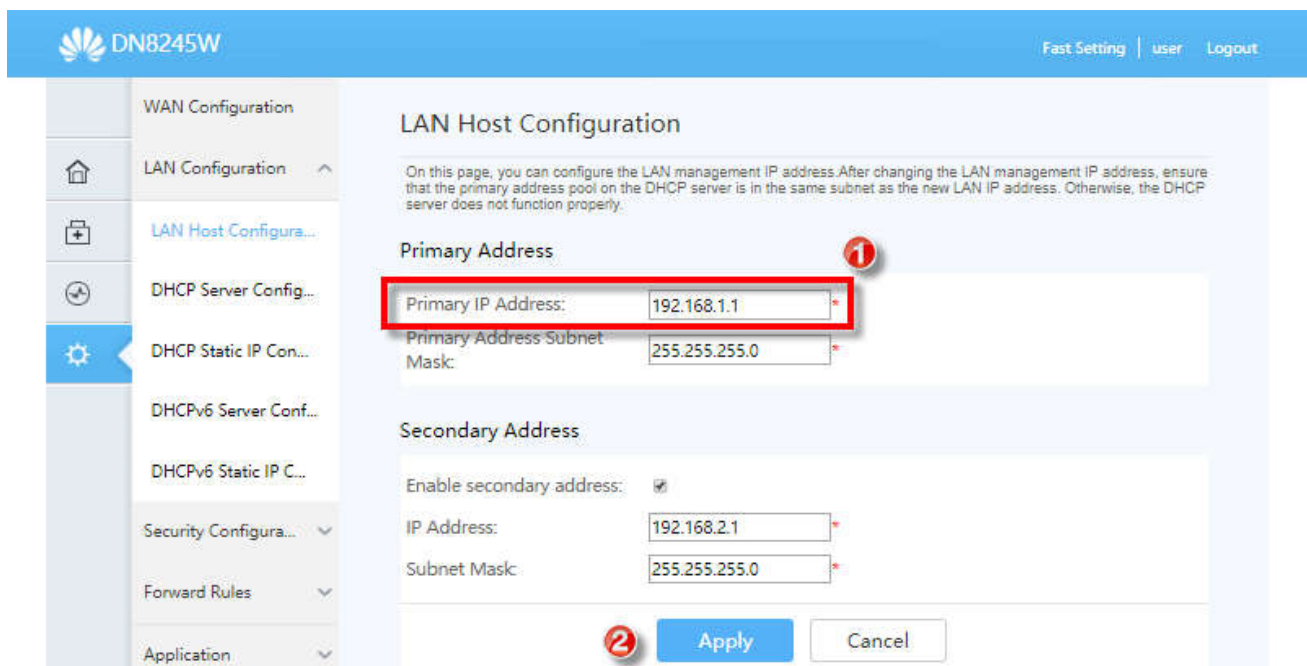
2. LAN Host Configuration

2.1. Click Advanced Configuration > LAN Host Configuration



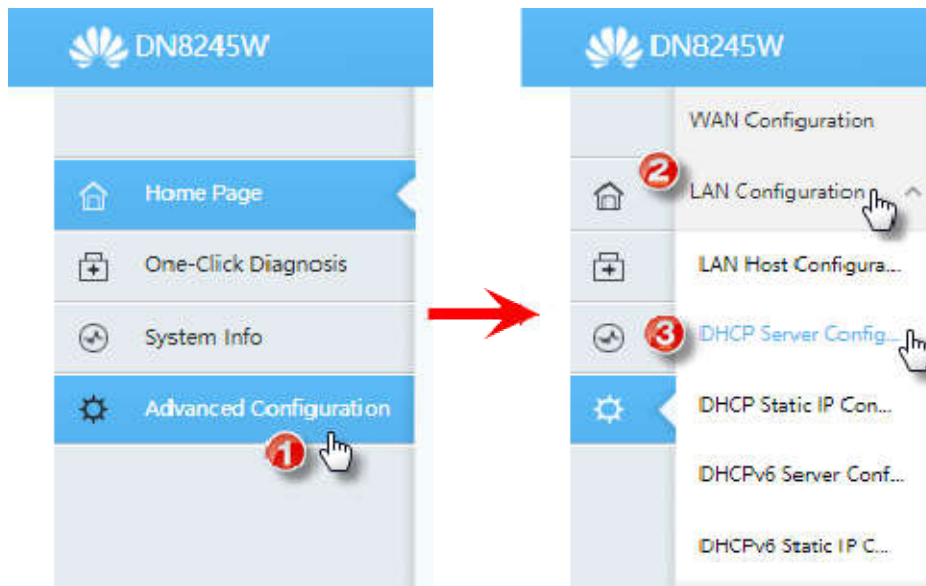
2.2. Default Gateway

- Primary IP Address : for Default Gateway or IP Address of Router setup
- When finished, press Apply



3. DHCP Server Configuration

3.1. Click Advanced Configuration > DHCP Server Configuration



3.2. IP Address setup

- Enable Primary DHCP Server : click a check to automatically allow Router distribute IP Address to connecting device
- Start IP Address : Start IP Address distribute to connecting device
End IP Address : End IP Address distribute to connecting device
- can change IP number to be the same as Default Gateway
- When finished, press Apply

WAN Configuration

LAN Configuration

LAN Host Configura...

DHCP Server Config...

DHCP Static IP Con...

DHCPv6 Server Conf...

DHCPv6 Static IP C...

Security Configura...

Forward Rules

Application

WLAN

System Management

Maintenance Diagno...

DHCP Server Configuration

On this page, you can configure DHCP server parameters for the LAN-side device to obtain IP addresses.

Primary Address Pool

Enable Primary DHCP Server: ①

Enable DHCP Relay:

Enable Option125:

LAN Host IP Address: 192.168.1.1

Subnet Mask: 255.255.255.0

Start IP Address: 192.168.1.33 *(it must be in the same subnet as the IP address of the LAN host.) ②

End IP Address: 192.168.1.64 *

Lease Time: 1 day(s)

Primary DNS Server:

Secondary DNS Server:

Conditional Address Pool

Enable DHCP conditional server: ③

Apply Cancel