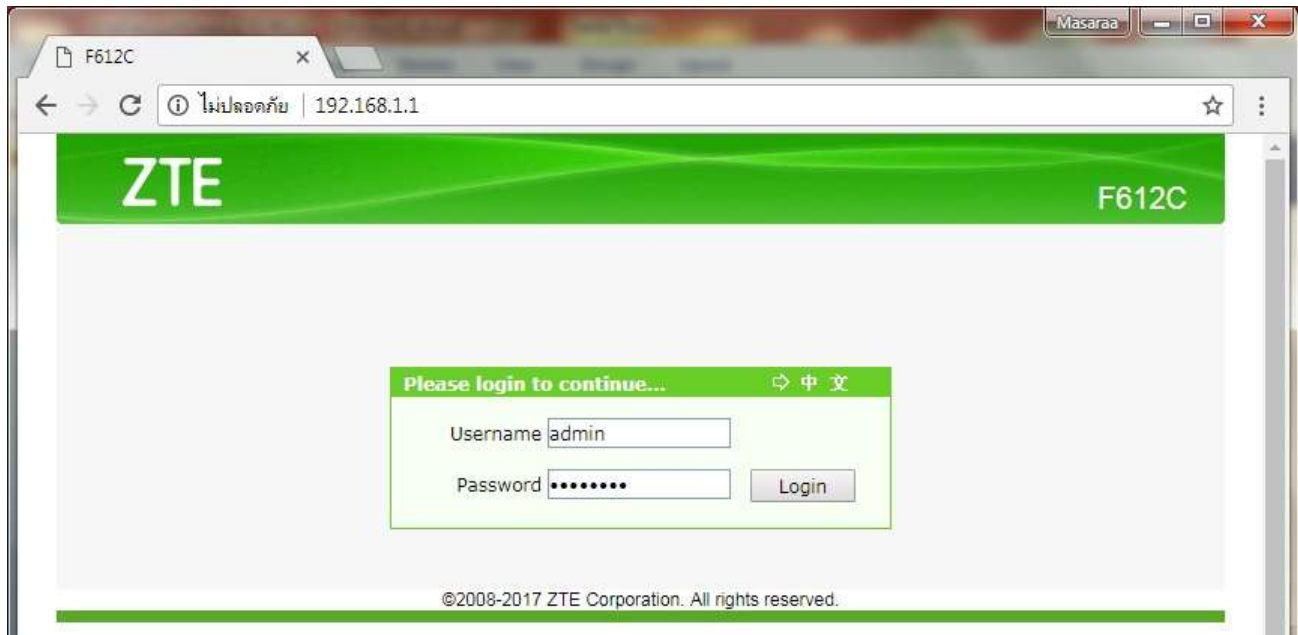


Change Password to access Router ZTE F612C

1. Open a Browser e.g. IE, Chrome and type <http://192.168.1.1> then press **Enter**
 - Username = **admin**
 - Password = **password**
 - Press **Login**



2. Go to **Administration > User Management > WEB User Management**

- **Old Password** : enter old password (**previously is password**)
- **New Password** : enter **new** password
- **Confirm Password** : enter **new** password again

ZTE F612C

Path:Administration-User Management-WEB User Management 中文 [Logout](#)

| | |
|------------------------|--|
| +Status | |
| +Network | |
| +Security | |
| +Application | |
| -Administration | |
| -User Management | |
| WEB User Management | |
| +System Management | |
| Log Management | |
| +Diagnosis | |
| +Loopback Detection | |
| +Help | |

Username

Old Password

New Password

Confirmed Password

©2008-2017 ZTE Corporation. All rights reserved.