

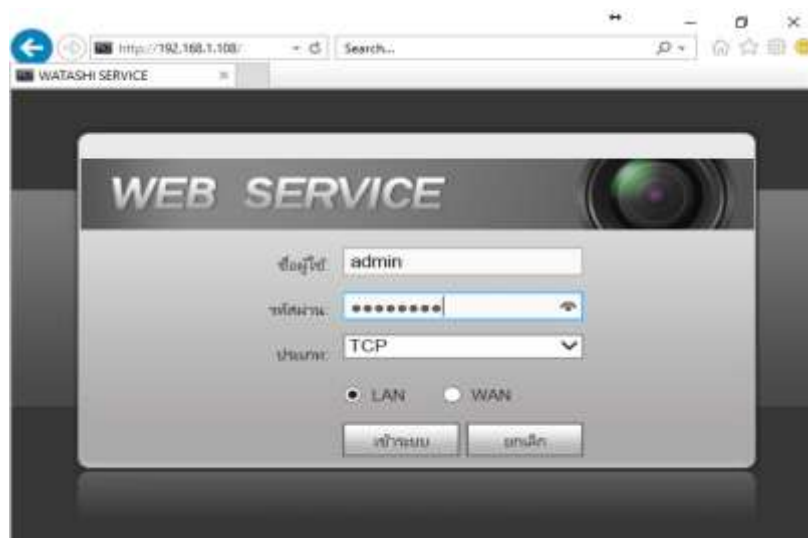
## Set up Fiberhome AN5506-04-CG to use TrueDDNS with CCTV

1. Check IP Address and Port of CCTV to set Port forwarding at Router

1.1. Check the setting at DVR that's used to record data from all cameras in house (ex. Watashi CCTV)

- Type IP Address of DVR at Browser, Ex. 192.168.1.108 then press Enter
- Enter Username and password of DVR then press Log in

\*\* in case don't know IP Address, Username and password of DVR, ask the technician who installs DVR



1.2. Check IP Address, go to Setting > Network > TCP/IP

- IP Address of DVR 192.168.1.108



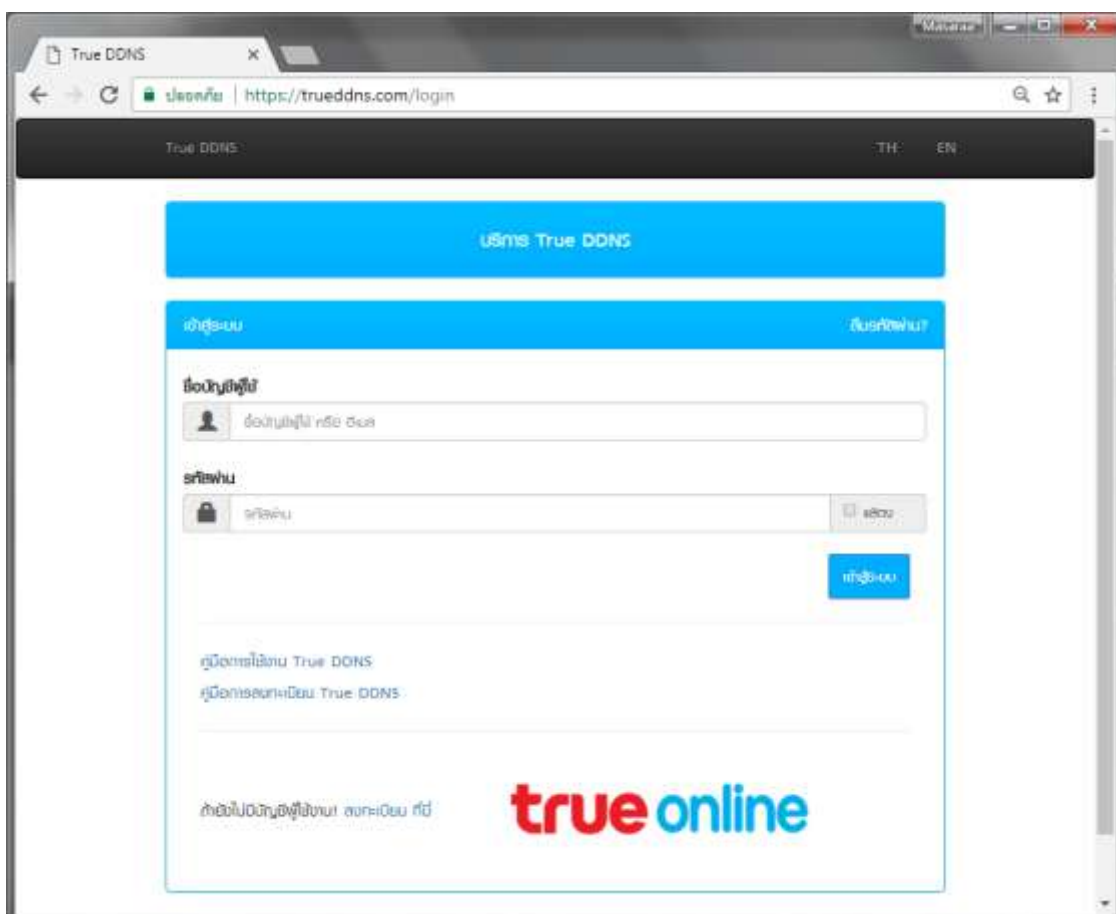
1.3. Check Port, go to Setting > Network > Connection, mostly used Port :

- TCP Port : 37777 (Port to view camera via Application on Smart Phone)
- HTTP Port : 81 (Port to view camera via Web Browser)



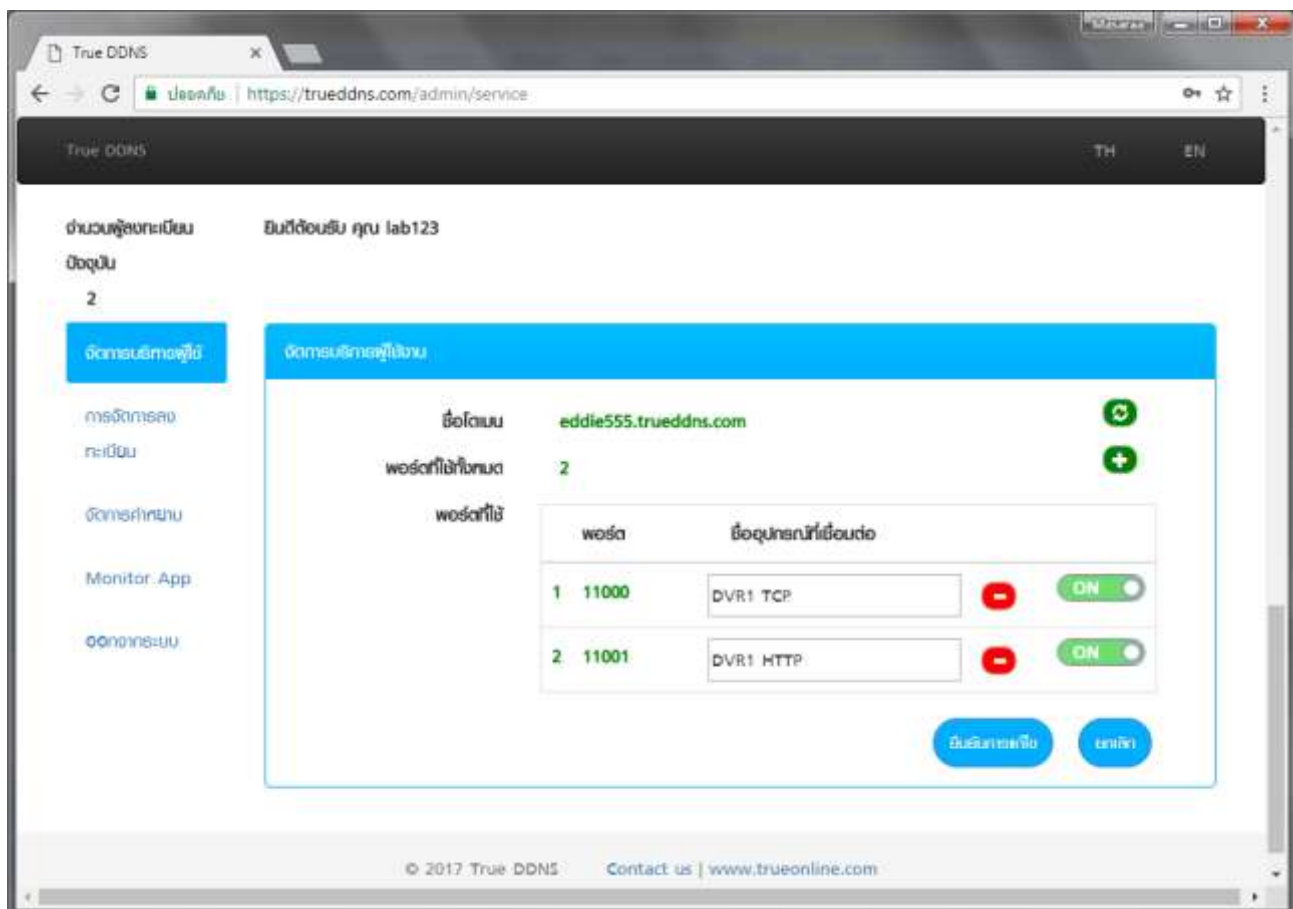
2. Type <https://trueddns.com/login> at Browser then press Enter

Login by using registered Username and password then press Log in



## 2.1 Select Service Management

- Pairing Port to align with DVR
- Port 11000 : set TCP name to be the same as TCP Port of DVR, click turn ON behind button
- Port 11001 : set HTTP name to be the same as HTTP Port of DVR, click turn ON behind button
- When finished, press Confirm



### 3. Set up Port Forwarding at Router

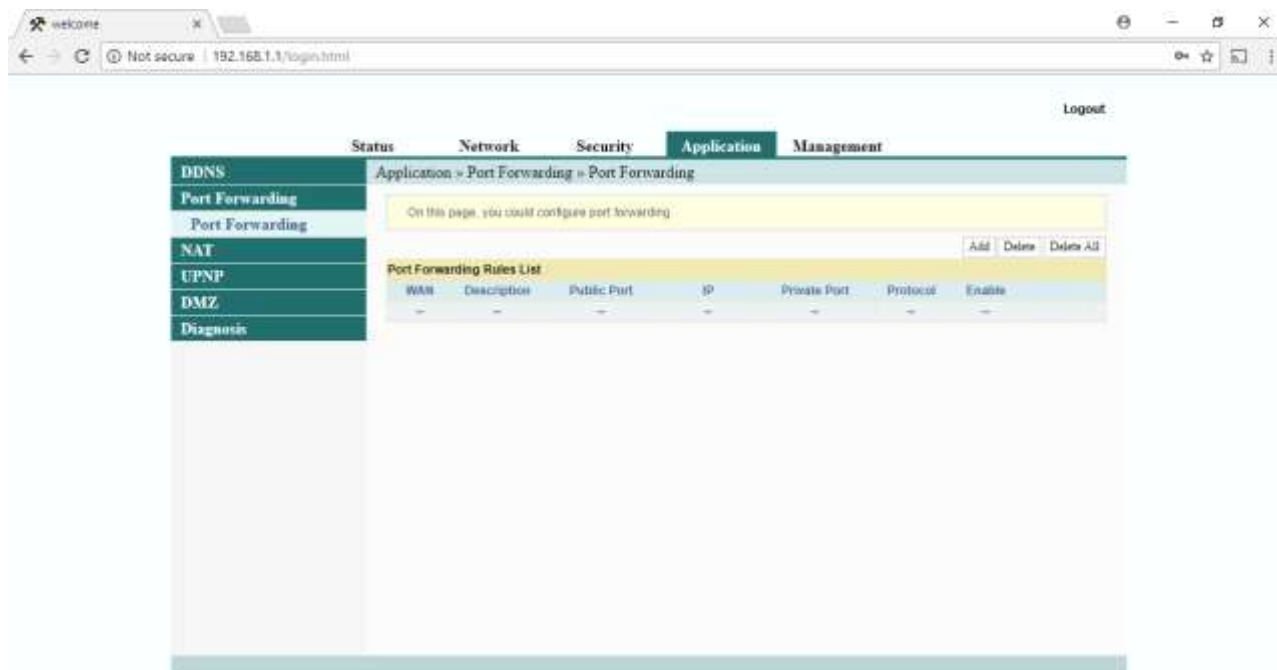
#### 3.1 Type 192.168.1.1

- Username = admin
- Password = password



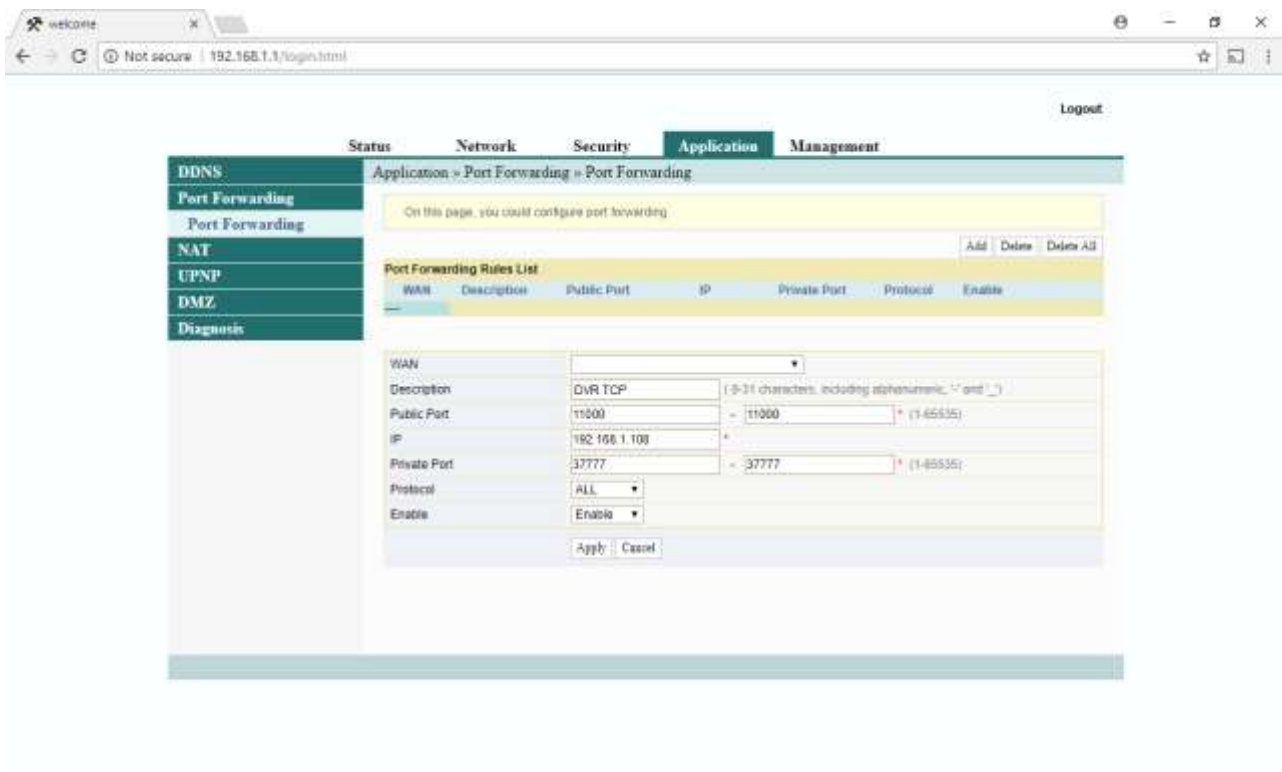
#### 3.2 Go to Application > Port Forwarding

- press Add



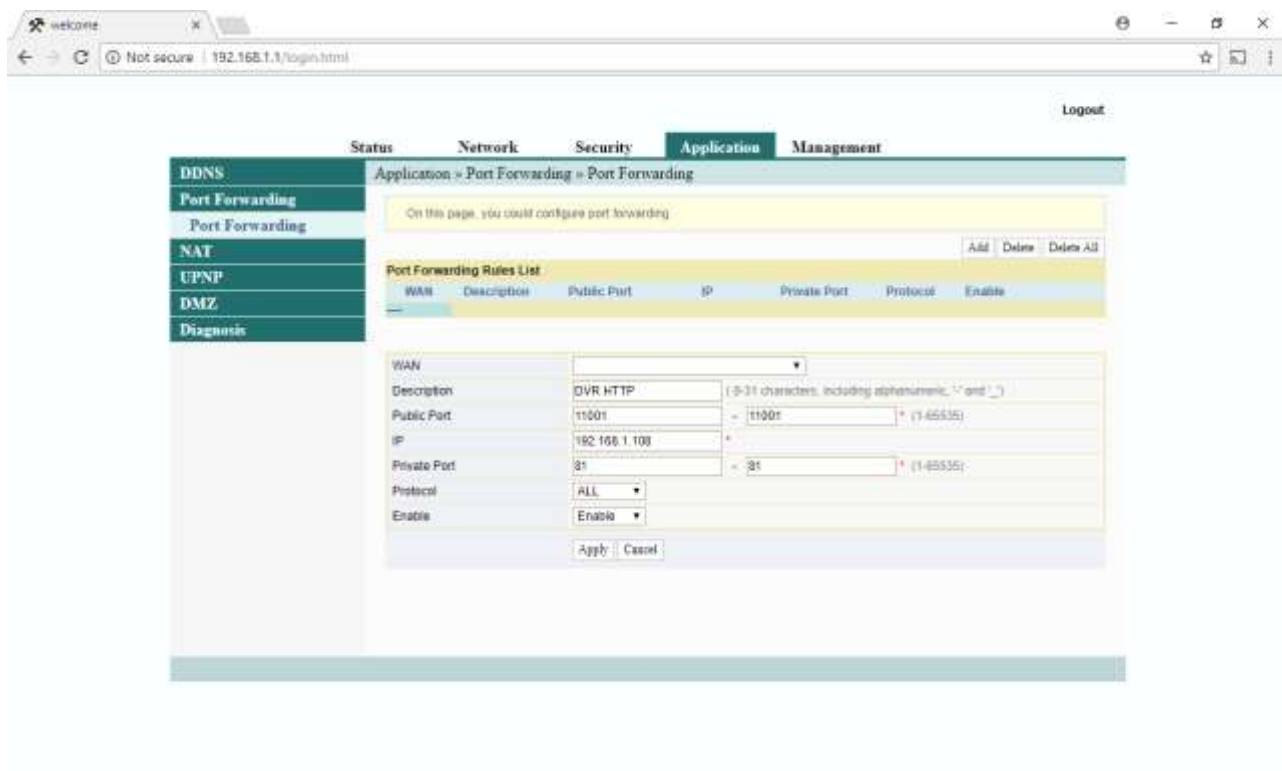
### 3.3 Set up as follows:

- WAN : select using Connection
- Description : enter name ex. DVR TCP
- Public Port : enter Port numbers received from True DDNS ex. 11000
- IP : enter IP Address of device to forward port ex. 192.168.1.108
- Private Port : enter Port numbers to forward ex. 37777
- Protocol : select ALL
- Enable : Enable
- Press Apply



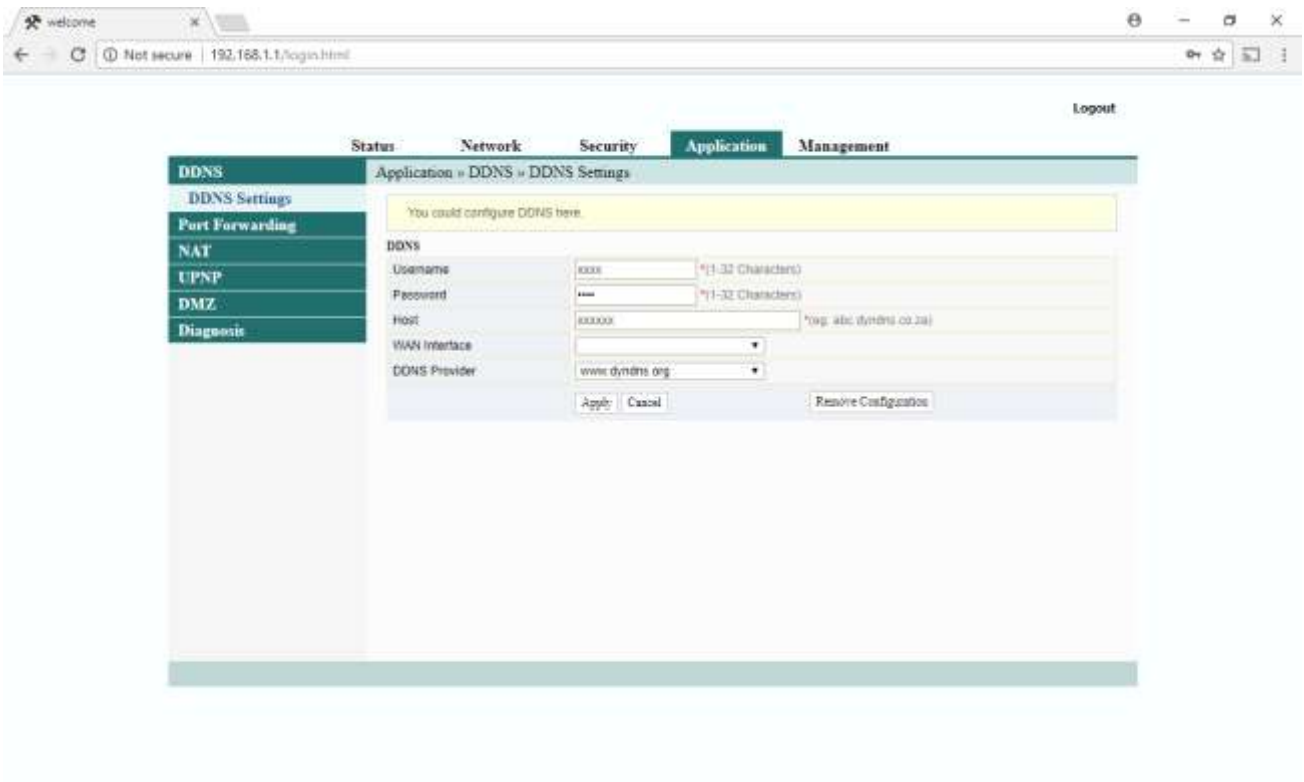
### 3.4 Set up HTTP Port > press Add

- WAN : select using Connection
- Description : enter name ex. DVR TCP
- Public Port : enter Port numbers received from True DDNS ex. 11001
- IP : enter IP Address of device to forward port ex. 192.168.1.108
- Private Port : enter Port numbers to forward ex. 81
- Protocol : select ALL
- Enable : Enable
- press Apply

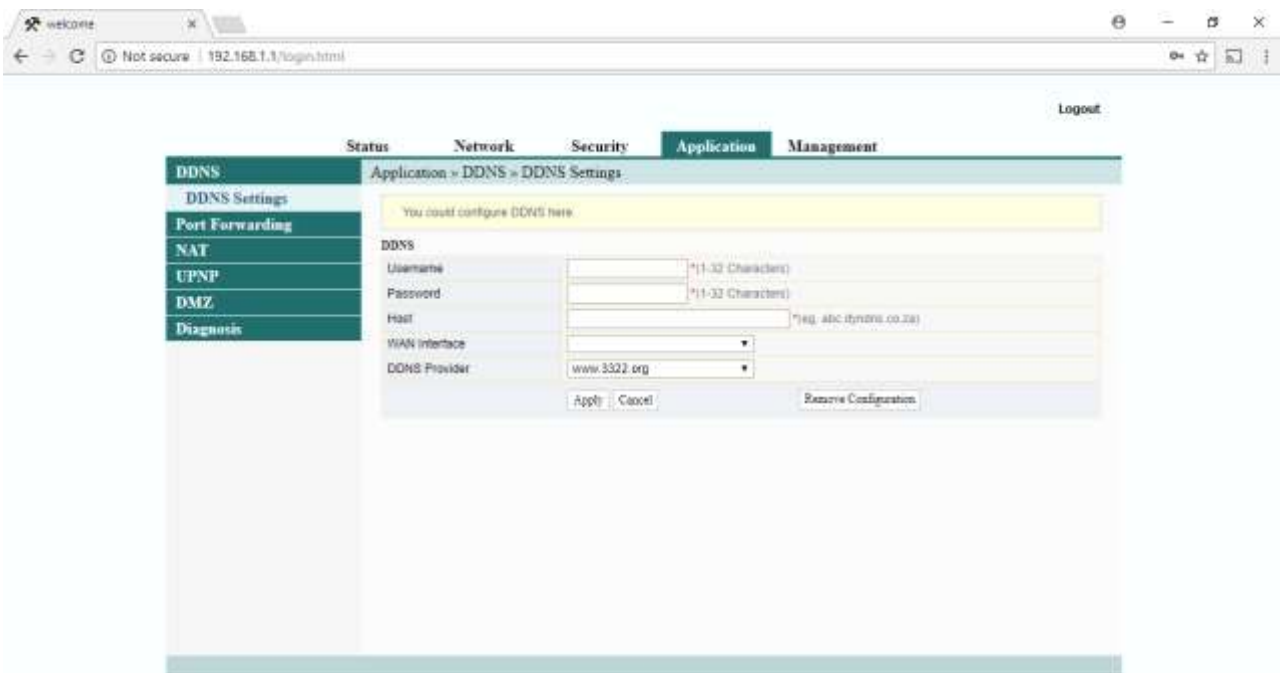


#### 4. Close DDNS setting at Router

##### 4.1 Application >> DDNS >> DDNS Setting



##### 4.2 Press Remove Configuration

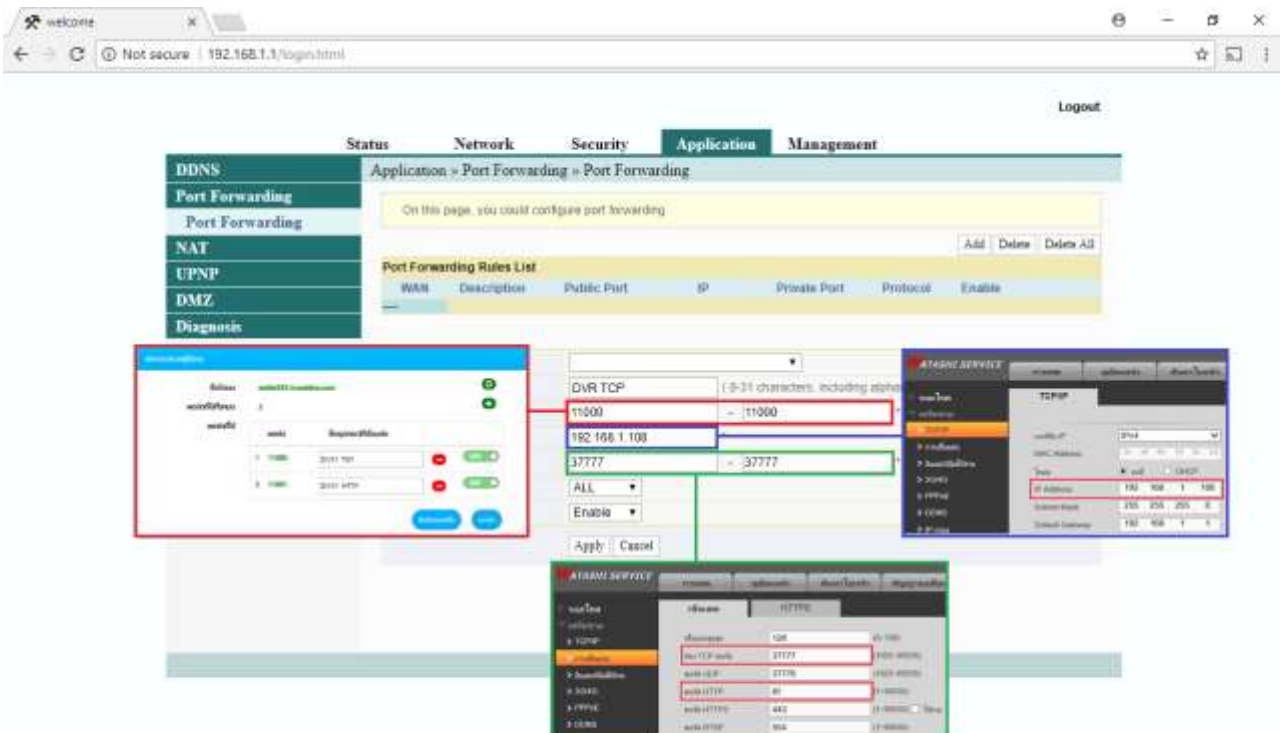


### 5. Close DDNS setting at DVR

- Go to Setting > DDNS
- Remove a check mark
- Press Save



### 6. Overall settings

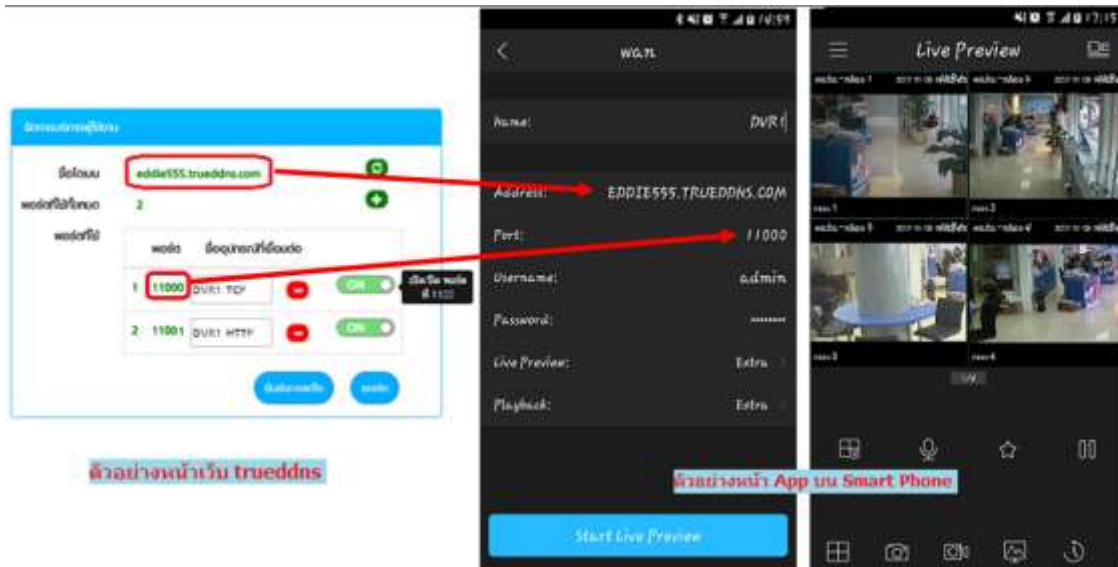




## 7. Test using via Mobile Internet or Internet that is different from at home

### 7.1 Test CCTV App on Smart Phone

- enter Domain name and Port numbers from TrueDDNS
- If the setting is correct, you'll see pictures from camera



### 7.2 Test the usage via Web

- enter Domain name : Port number from TrueDDNS Ex. eddie555.trueddns.com:11001
- If the setting is correct, you can access CCTV Web page

