

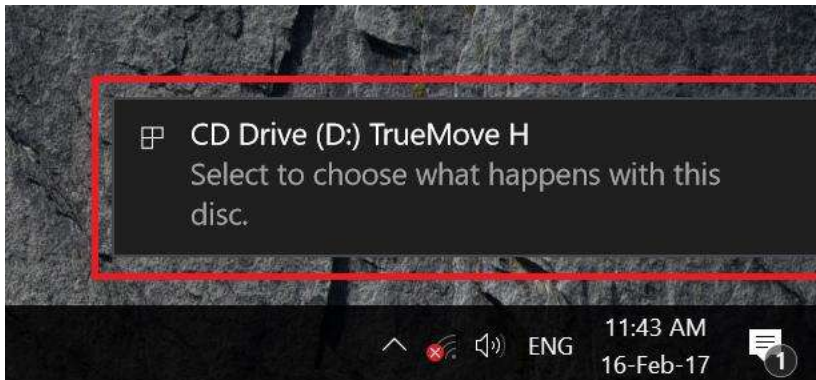
Install program and driver Aircard Power Surf II (ZTE MF668A) on Windows 10

This setting is applicable to Aircard Power Surf II (ZTE model MF668A) on computer with Windows 10 OS

1. Connect Aircard Power Surf II via computer's USB port



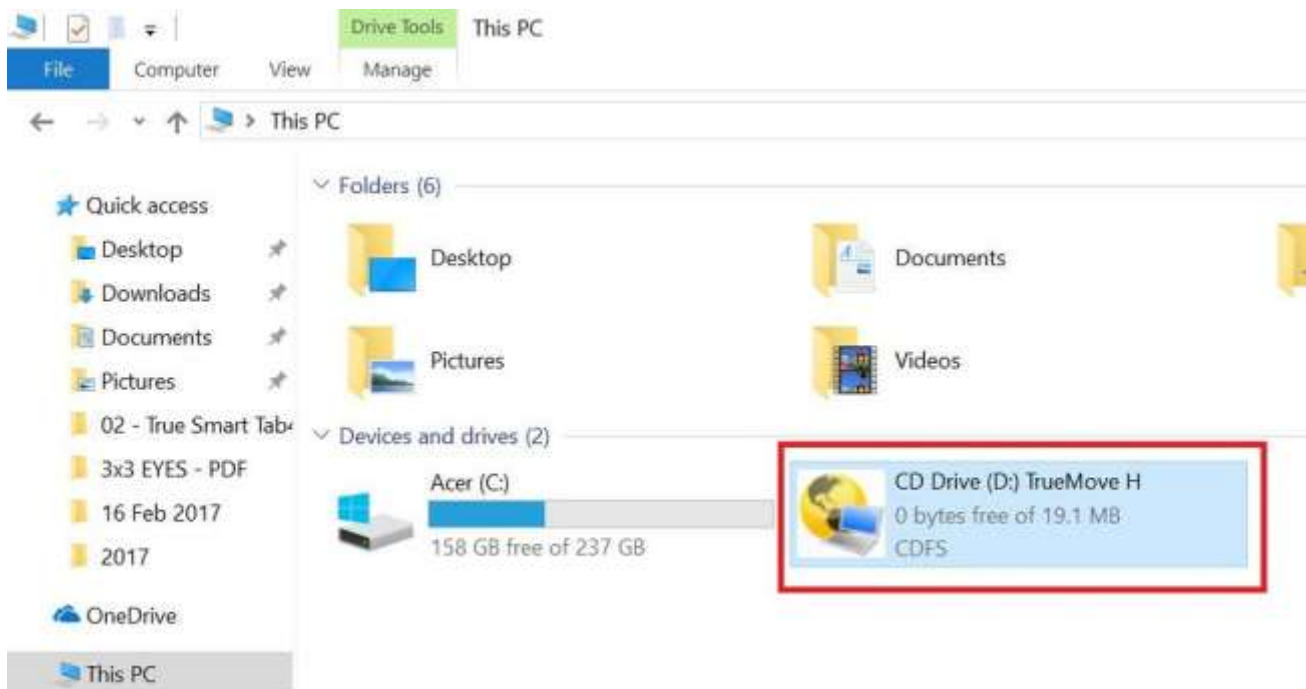
2. Wait a moment, Windows 10 system will check and find Drive :
Aircard TrueMove H for the installation of Driver and TrueMove H
high-speed connection App (if turn off auto check on Windows, this
page will not show)



3. Double click at This PC on Desktop



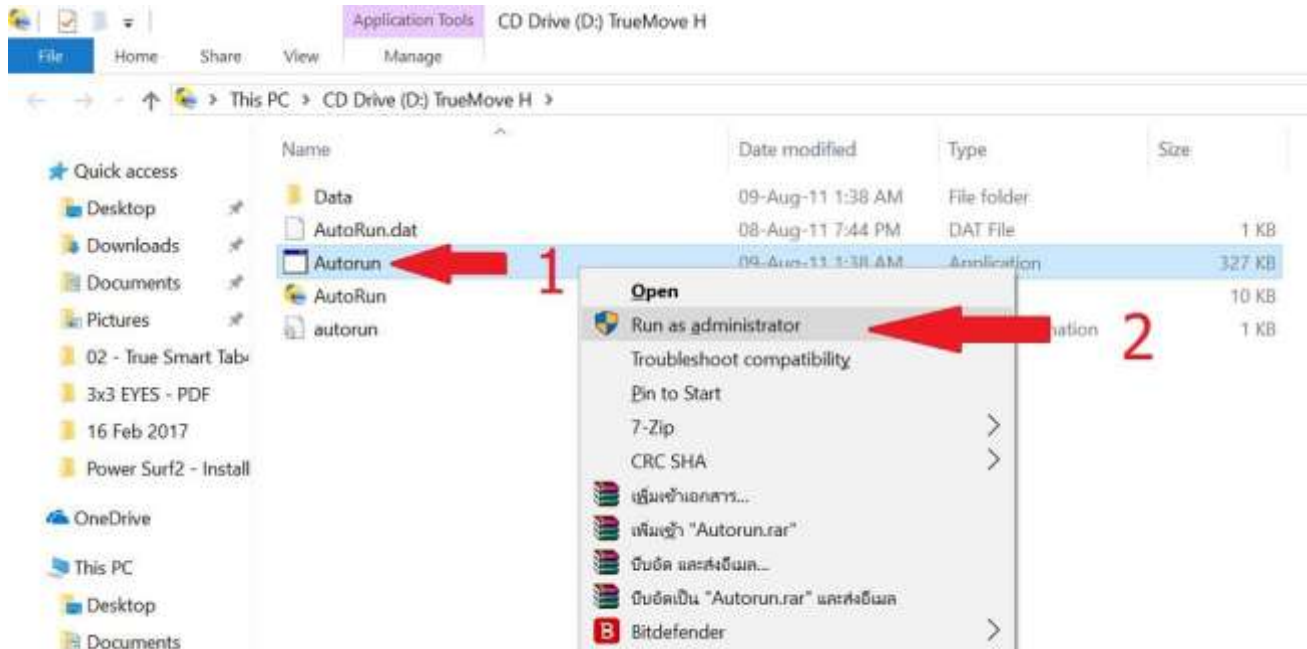
4. This PC in the center, you'll find Drive of TrueMove H Air Card



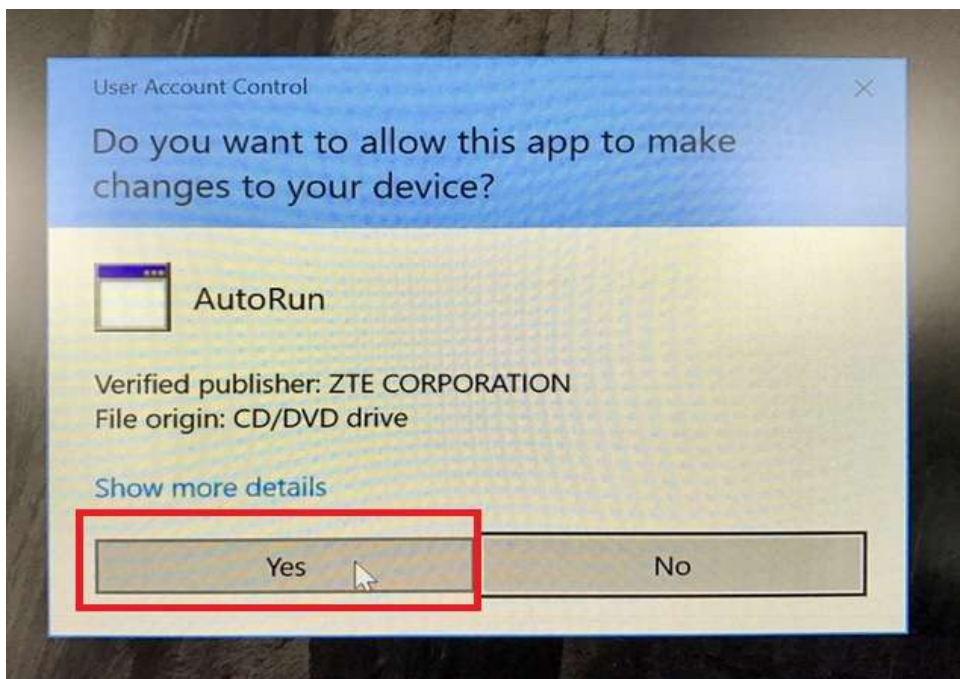
5. Right click at Drive: TrueMove H and select Open in new window



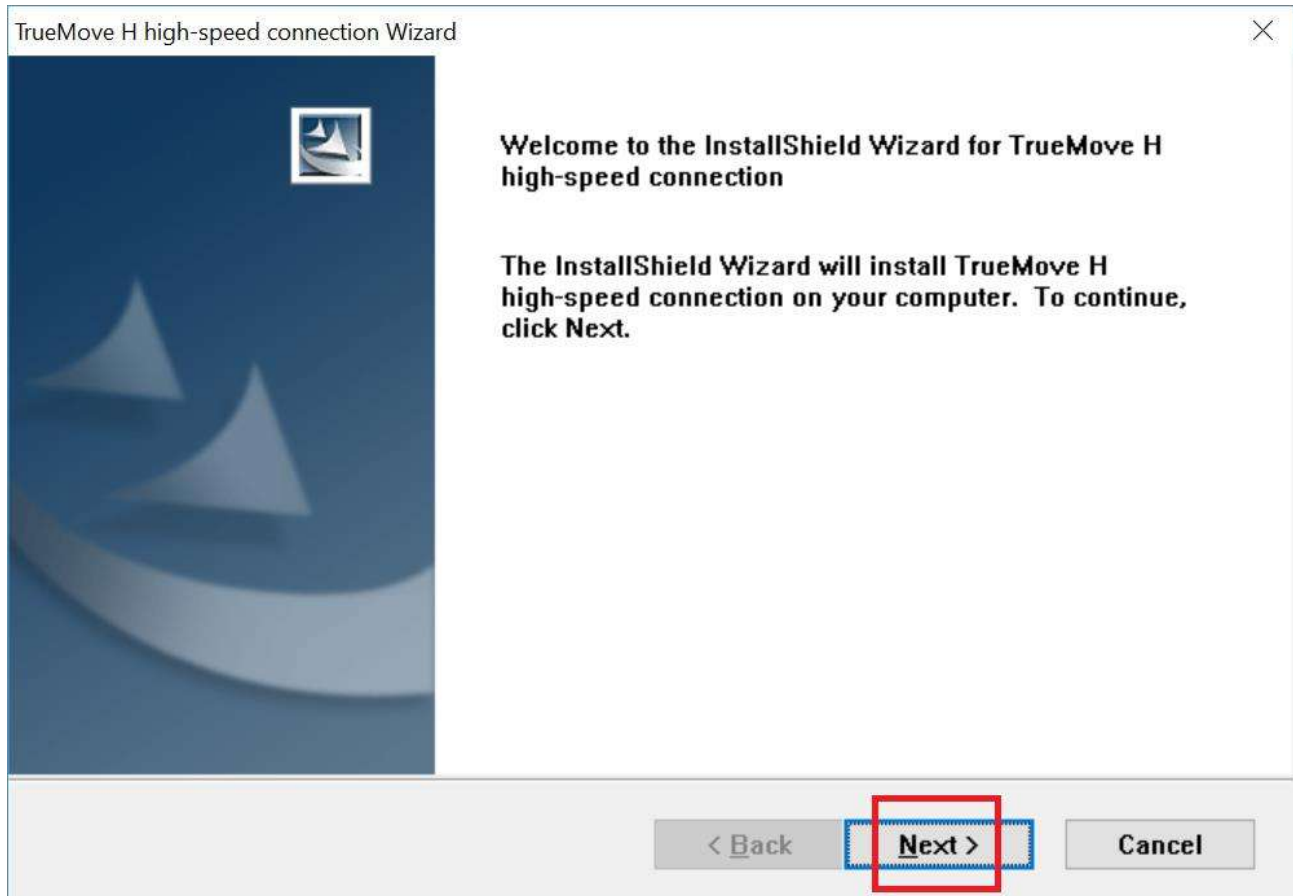
6. Drive TrueMove H : right click at Autorun (Type: Application, size : 327KB) then select Run as administrator



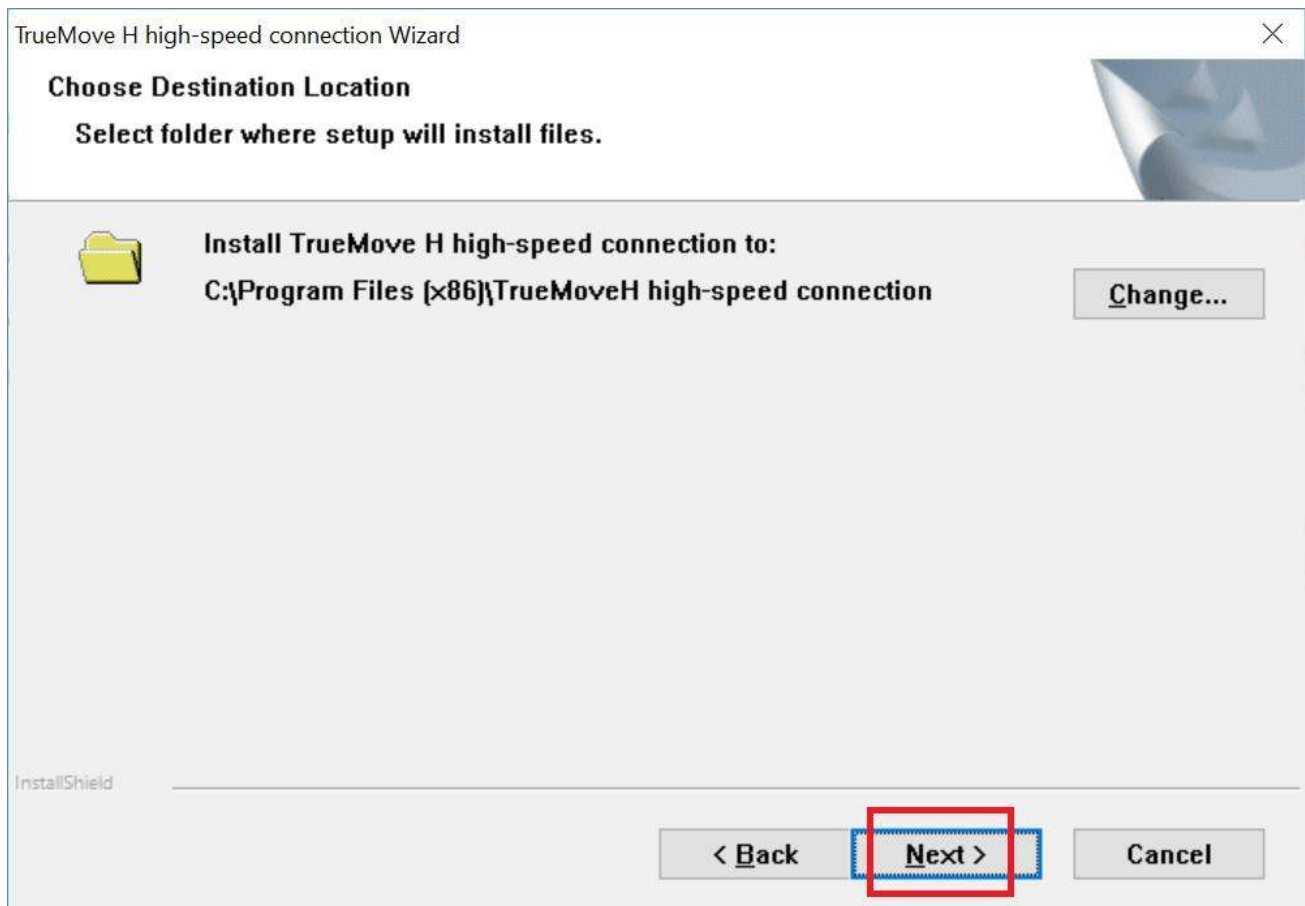
7. User Account Control, press Yes



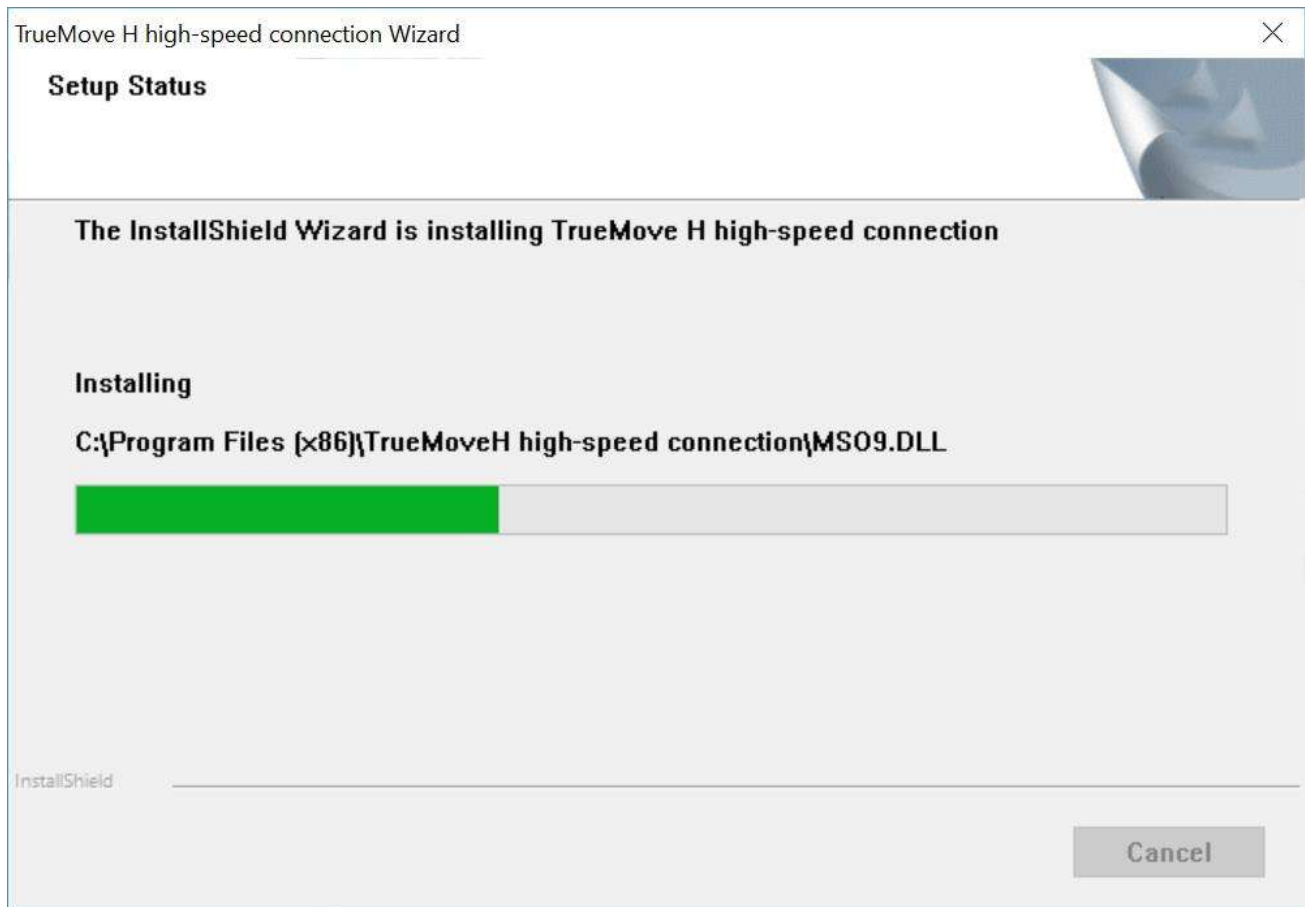
8. TrueMove H high-speed connection Wizard to install App and Driver of Aircard Power Surf II (ZTE MF668A), then press Next



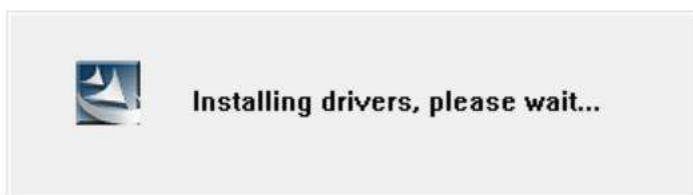
9. Choose destination location install App > do not change then press Next to continue



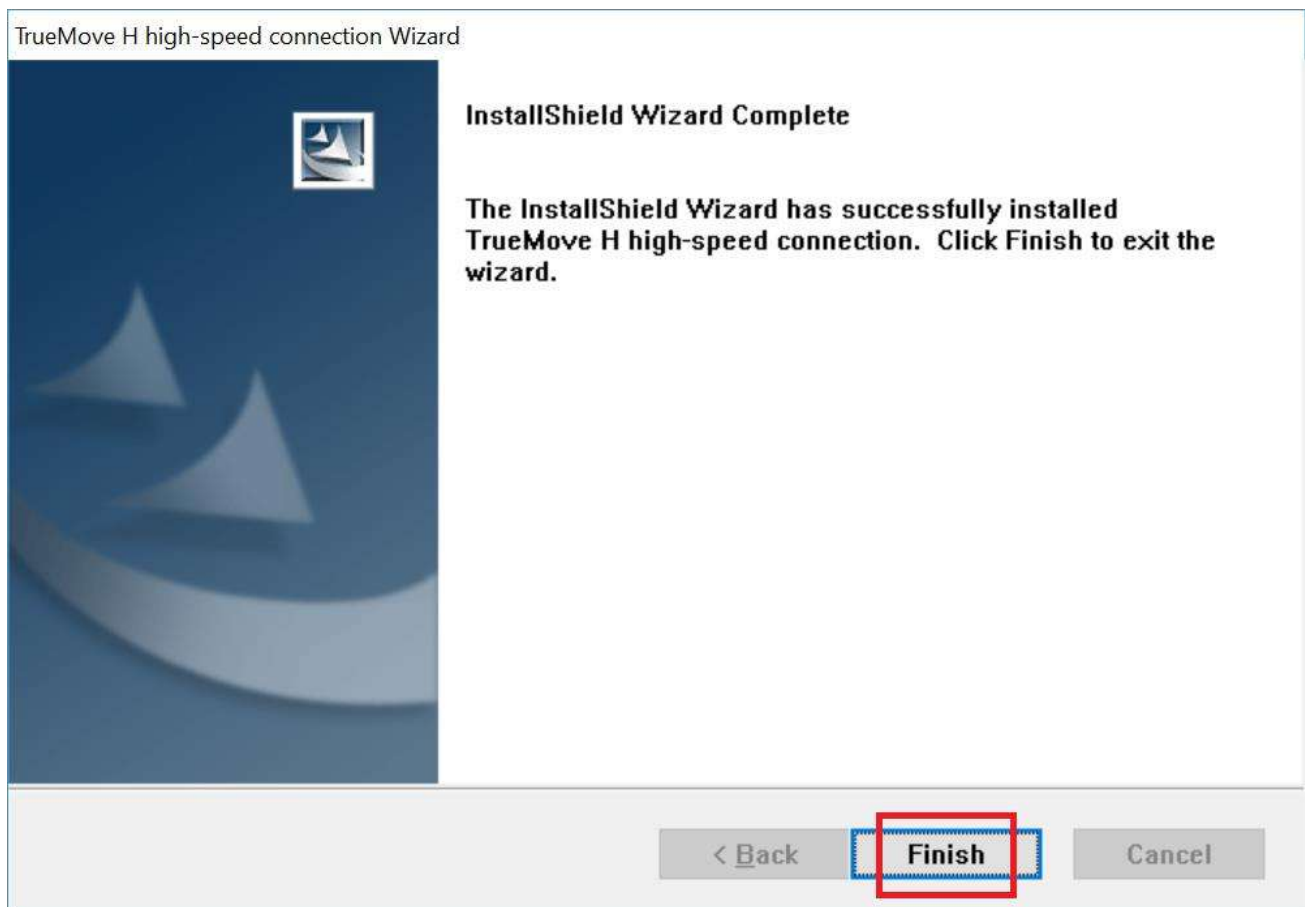
10. The system will start installing App



11. Installing... wait a moment



12. InstallShield Wizard Complete > press Finish to exit the wizard

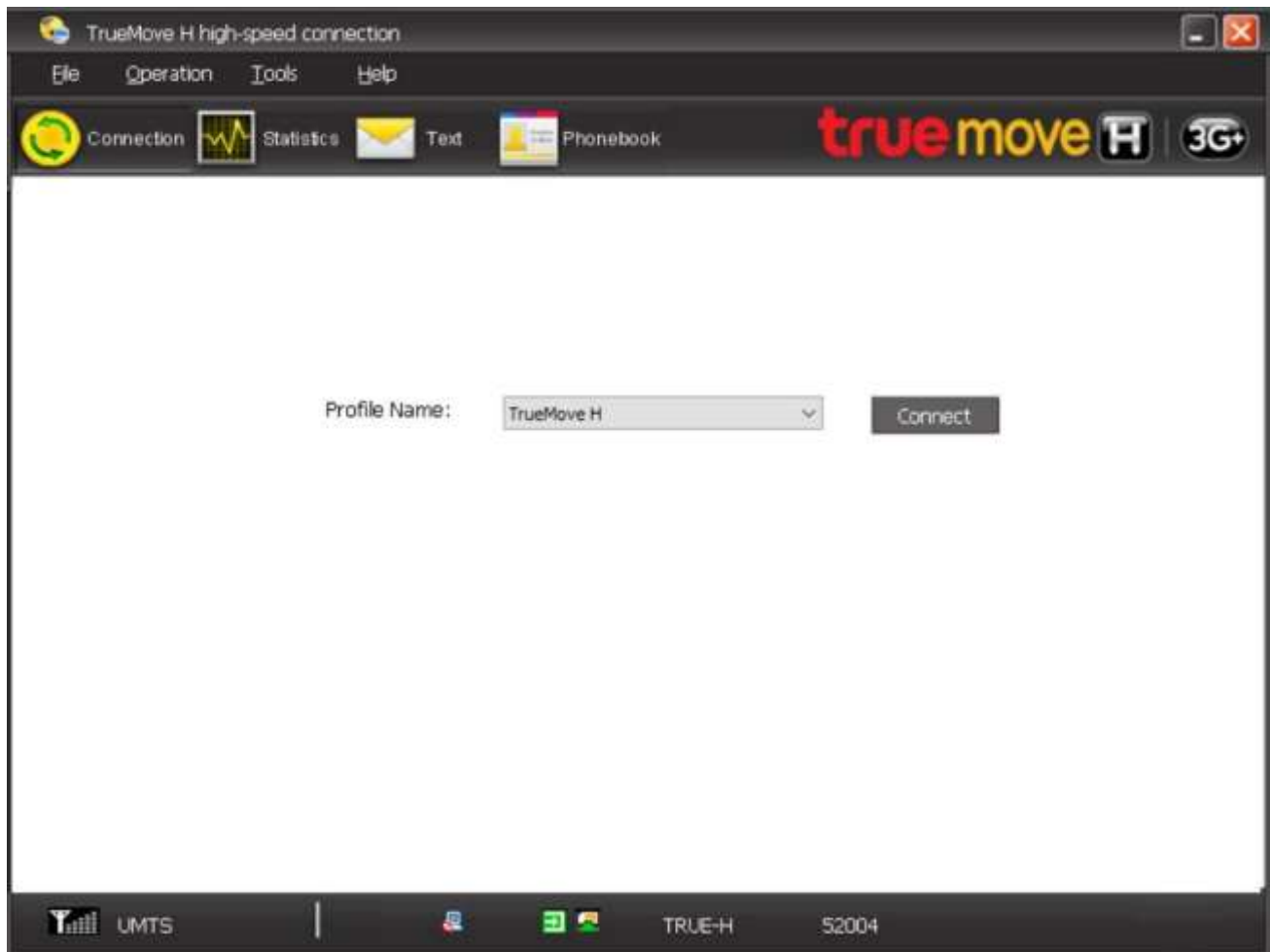


13. Back to Desktop:

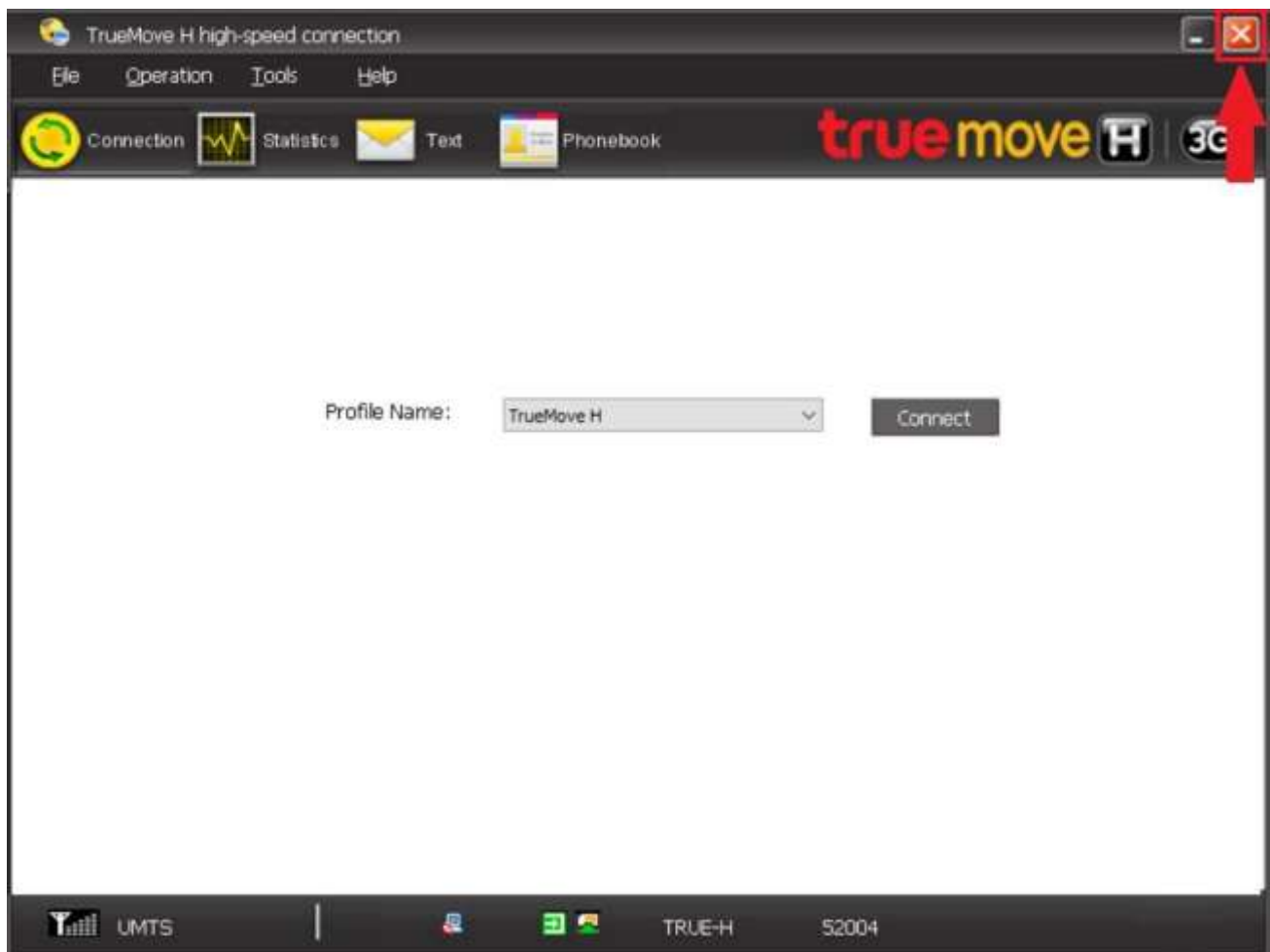
- Shortcut for TrueMove H high-speed connection App will appear
- Wait a moment, TrueMove H high-speed connection App will automatically open
- Initializing... UIMain.exe to start the usage of TrueMove H high-speed connection App (if notification is turned off, this message may not show)



14. TrueMove H high-speed connection App will appear



15. To close App, press red X on the top right corner



16. Close the software? press Yes to close App



17. **Advisory:** since Windows 10 operated with 64bit but TrueMove H high-speed connection App is 32bit, you may face App Error.

This can be solved by pressing Restart on computer to restart using App again

- Click Windows at bottom left
- Click turn off icon
- Click Restart

