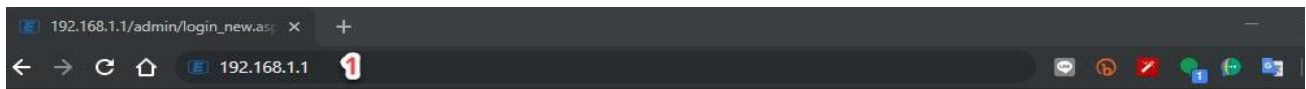


Set up Wi-Fi on SERCOM T3 ST-244F

1. Type 192.168.1.1 and press Enter, User = admin /Password = enter letters shown below, and press Login



UserLogin

UserName:

Password:

n T C g 9 d t x

2. At Status, select WLAN

Logout
Firmware ver: V3.3.4

Status
LAN
WLAN
Firewall
Advance
Admin
Statistics

Device Status

This page shows the current status and some basic settings of the device.

System	
Device Name	ST-244F
Uptime	34 min
Firmware Version	V3.3.4
CPU Usage	1%
Memory Usage	34%
Name Servers	
IPv4 Default Gateway	
IPv6 Default Gateway	::

LAN Configuration	
IP Address	192.168.1.1
Subnet Mask	255.255.255.0
DHCP Server	Enabled
MAC Address	78B213D24448

WAN Configuration						
Interface	VLAN ID	Connection Type	Protocol	IP Address	Gateway	Status
ppp0_nas0_0	100	INTERNET_TR069	PPPoE			down 0sec / 0sec

3. Set up WLAN : 5GHz

3.1. Basic Settings

- Disable WLAN Interface : turn off Wi-Fi
- Band : select Band to use, by default is 5GHz (A+N+AC)
- SSID : Wi-Fi name
- Channel Width : select channel width, by default is AUTO
- Channel Number : select Wi-Fi channel, by default is AUTO
- Radio Power : by default is Standard
- Associated Clients : show active WLAN clients connected to Wi-Fi 5GHz

Status LAN WLAN Services Firewall Advance Admin Statistics

wlan0 (5GHz)

Basic Settings

Advanced Settings

Security

Access Control

WDS

Site Survey

WPS

Status

wlan1 (2.4GHz)

WLAN Basic Settings

This page is used to configure the parameters for WLAN clients which may connect to your Access Point. Here you may change wireless encryption settings as well as wireless network parameters.

Disable WLAN Interface 1

Band: 2 5 GHz (A+N+AC) →

5 GHz (A)
 5 GHz (N)
 5 GHz (A+N)
 5 GHz (AC)
 5 GHz (N+AC)
 5 GHz (A+N+AC)

Mode: AP Multiple AP

SSID: 3 true_home5G_448

Channel Width: 4 AUTO →

20MHz
 40MHz
 80MHz
 AUTO

Control Sideband: Auto

Channel Number: 5 Auto →

Auto
 36
 40
 44
 48
 149
 153
 157
 161
 165

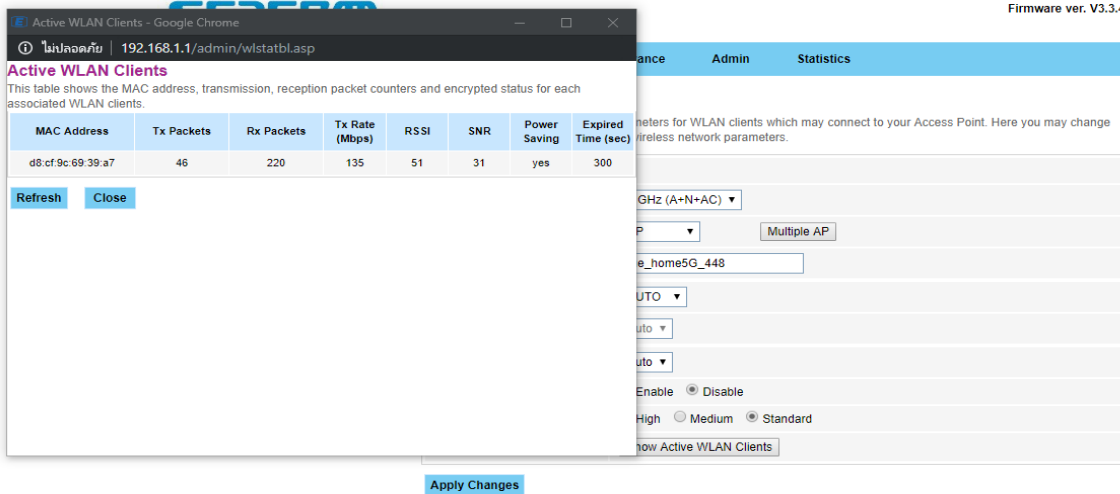
DFS: Enable Disable

Radio Power: 6 High Medium Standard

Associated Clients: 7 Show Active WLAN Clients

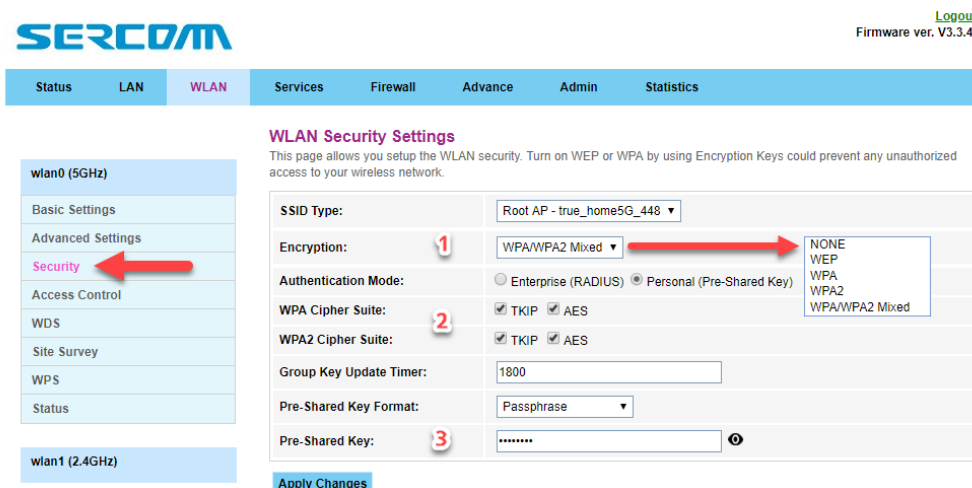
Apply Changes

TRUE CORPORATION PUBLIC COMPANY LIMITED
 18 TRUE TOWER, RATCHADAPHISEK ROAD,
 HUAI KHWANG, BANGKOK 10310 THAILAND
 WWW.TRUECORP.CO.TH



3.2. Security

- Encryption : select Wi-Fi encryption type, by default is WPA/WPA2 Mixed
- WPA Cipher Suite & WPA2 Cipher Suite : select Wi-Fi encryption type
- Pre-Shared Key : set Wi-Fi password



4. Set up WLAN : 2.4GHz

4.1. Basic Settings

- Disable WLAN Interface : turn off Wi-Fi
 - Band : select Band to use, by default is 2.4GHz (B+G+N)
 - SSID : Wi-Fi name
 - Channel Width : select channel width, by default is 20MHz
 - Channel Number : select Wi-Fi channel, by default is AUTO
 - Radio Power : by default is Standard
 - Associated Clients : show active WLAN clients connected to Wi-Fi
- 2.4GHz

The screenshot shows the SERCOM web interface for WLAN Basic Settings. The page title is "WLAN Basic Settings" and it includes a description: "This page is used to configure the parameters for WLAN clients which may connect to your Access Point. Here you may change wireless encryption settings as well as wireless network parameters." The interface has a navigation menu with tabs for Status, LAN, WLAN, Services, Firewall, Advance, Admin, and Statistics. The WLAN tab is active, and the left sidebar shows options for wlan0 (5GHz) and wlan1 (2.4GHz), with "Basic Settings" selected for wlan1. The main content area contains the following settings:

- 1** Disable WLAN Interface
- 2** Band: 2.4 GHz (B+G+N) (Dropdown menu options: 2.4 GHz (B), 2.4 GHz (G), 2.4 GHz (B+G), 2.4 GHz (N), 2.4 GHz (G+N), 2.4 GHz (B+G+N))
- 3** Mode: AP (Dropdown menu options: AP, Multiple AP)
- 4** SSID: true_home2G_448
- 5** Channel Width: 20MHz (Dropdown menu options: 20MHz, 40MHz)
- Control Sideband: Upper
- 6** Channel Number: Auto (Dropdown menu options: Auto, 1, 2, 3, 4, 5, 6, 7, 8, 9, 10, 11)
- 7** Radio Power: High Medium Standard
- 8** Associated Clients: Show Active WLAN Clients

An "Apply Changes" button is located at the bottom of the settings area.

Active WLAN Clients

This table shows the MAC address, transmission, reception packet counters and encrypted status for each associated WLAN clients.

MAC Address	Tx Packets	Rx Packets	Tx Rate (Mbps)	RSSI	SNR	Power Saving	Expired Time (sec)
d8.cf.9c.69.39.a7	14	157	65	64	30	yes	300

Refresh Close

Apply Changes

4.2. Security

- Encryption : select Wi-Fi encryption type, by default is WPA/WPA2 Mixed
- WPA Cipher Suite & WPA2 Cipher Suite : select Wi-Fi encryption type
- Pre-Shared Key : set Wi-Fi password

WLAN Security Settings

This page allows you setup the WLAN security. Turn on WEP or WPA by using Encryption Keys could prevent any unauthorized access to your wireless network.

SSID Type: Root AP - true_home2G_448

Encryption: 1 WPA/WPA2 Mixed → NONE, WEP, WPA, WPA2, WPA/WPA2 Mixed

Authentication Mode: Enterprise (RADIUS) Personal (Pre-Shared Key)

WPA Cipher Suite: 2 TKIP AES

WPA2 Cipher Suite: TKIP AES

Group Key Update Timer: 1800

Pre-Shared Key Format: Passphrase

Pre-Shared Key: 3

Apply Changes