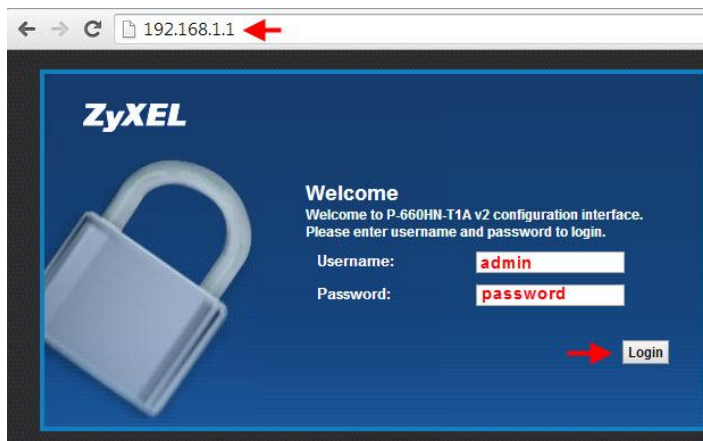


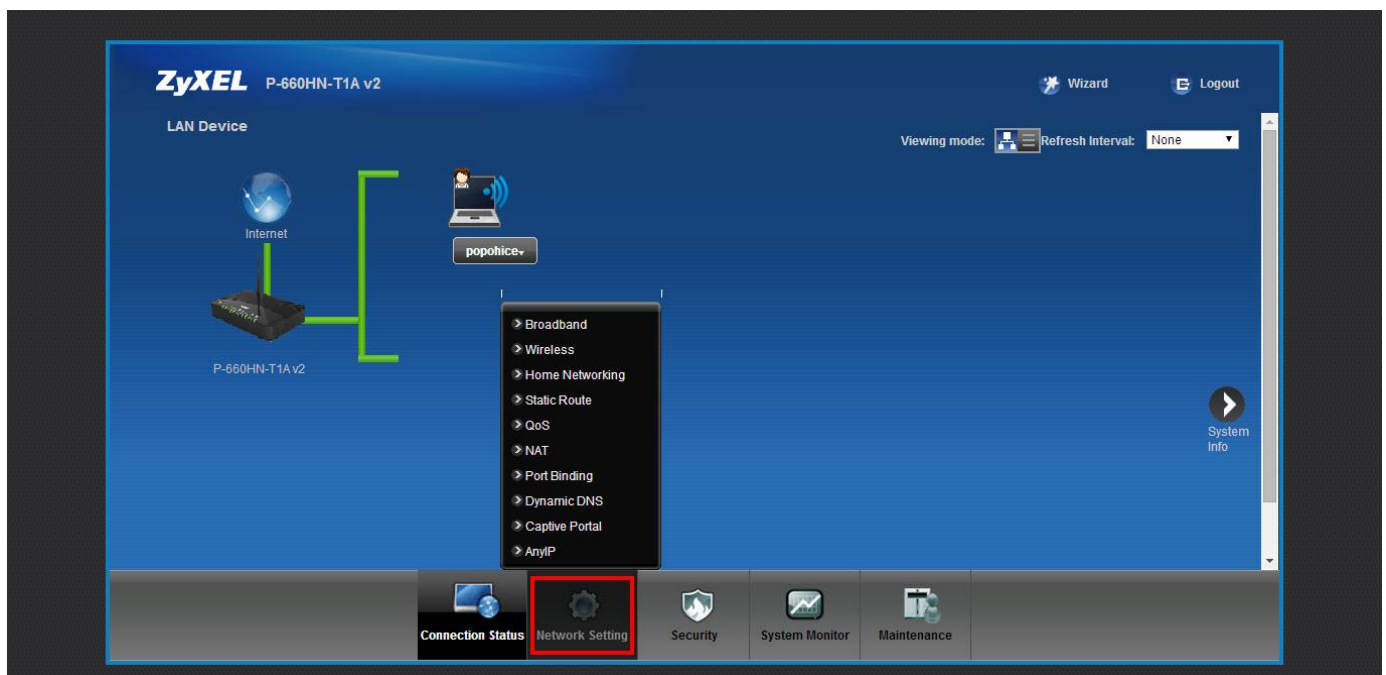
How to set up WAN on Zyxel P660HN T1A V2

Set up Router to be connected with internet

1. Type `http://192.168.1.1` at the Address bar and enter. At Login page enter Username = admin / Password = password and then click OK

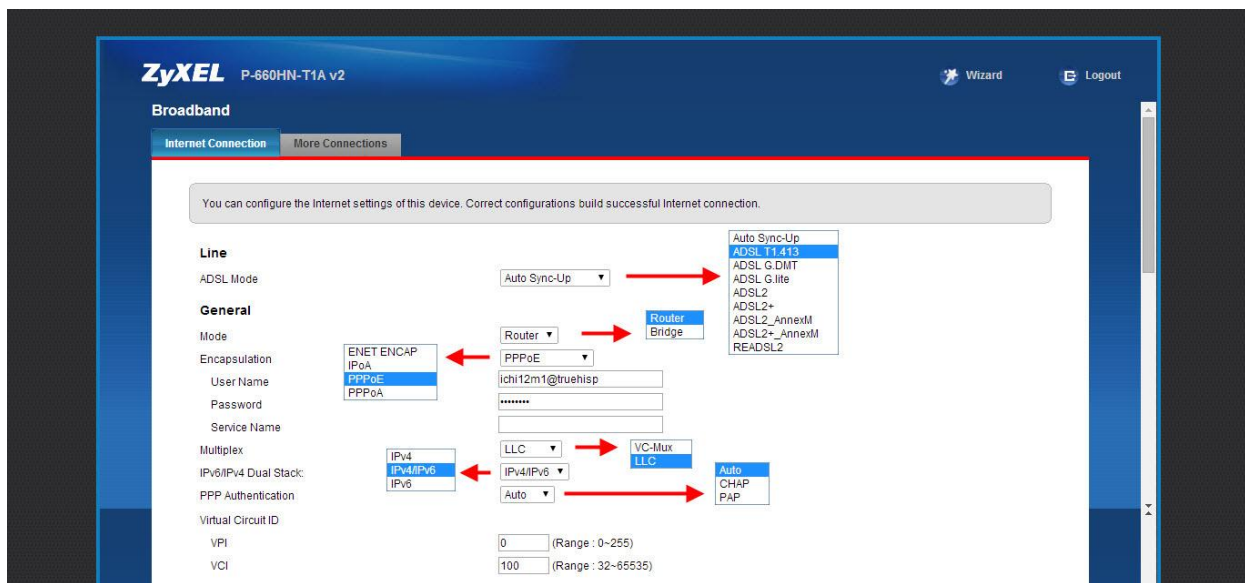


2. Go to Network Setting -> list menu will appear, click Broadband



3. Set up as follows:

- Mode = Routing
- Encapsulation = PPPoE
- Username and Password to connect with True
- Multiplex = LLC
- VPI = 0
- VCI = 100



4. After completed, scroll down and click Apply

