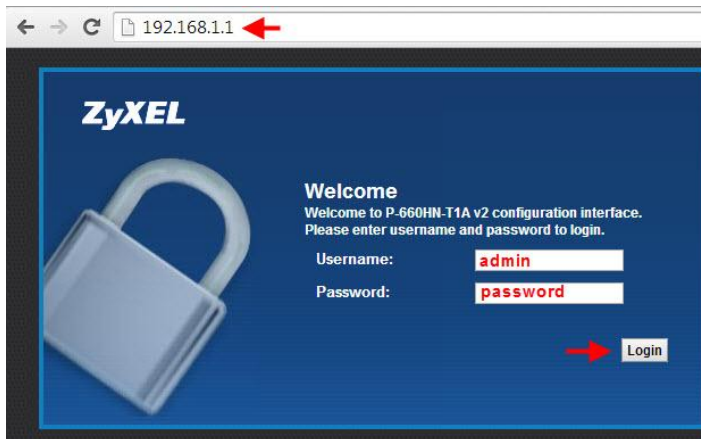
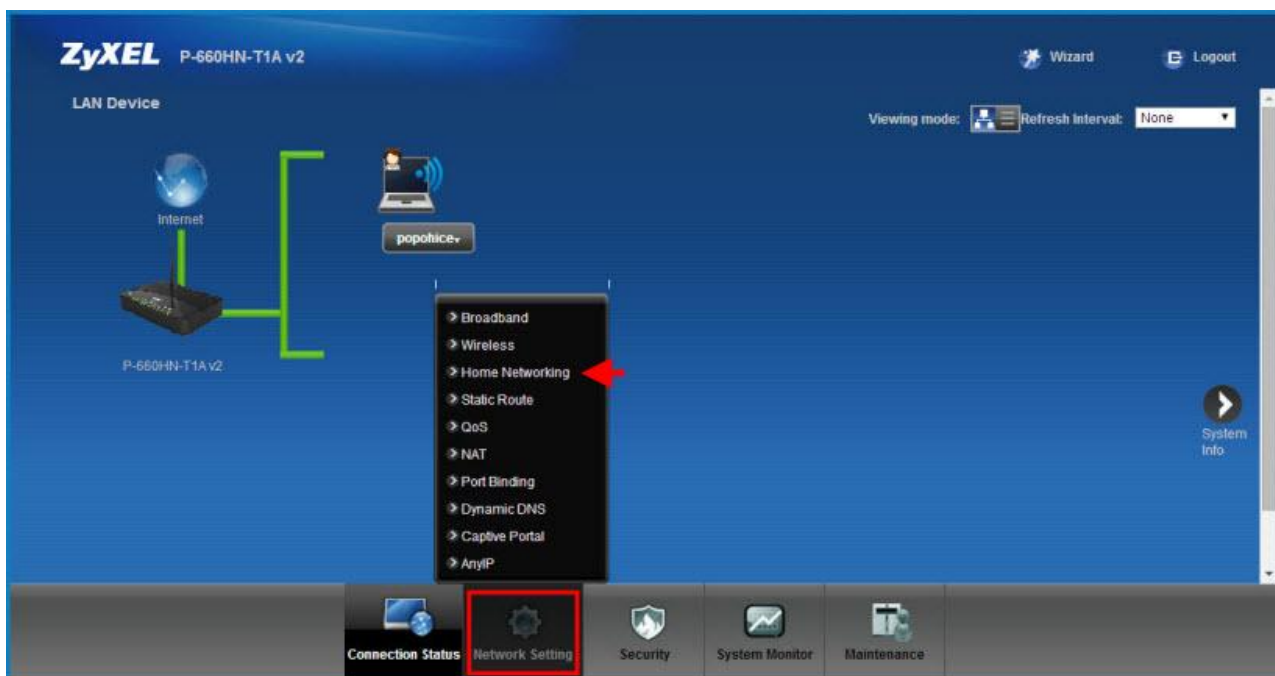


How to set up LAN on Zyxel 4 Port P660 HN T1A V2

1. Type `http://192.168.1.1` at the Address bar and enter. At Login page enter Username = admin / Password = password and then click OK



2. Go to Network Setting -> Home Networking



3. You can change IP Pool Starting Address, by Default is 192.168.1.33

The screenshot displays the ZyXEL P-660HN-T1A v2 configuration interface for Home Networking. The 'LAN Setup' tab is active, showing various network configuration options. The 'IP Addressing Values' section is highlighted with a red box, showing the 'IP Pool Starting Address' set to 192.168.1.33 and 'Pool Size' set to 32. The 'DNS Values' section shows 'DNS Proxy' set to 192.168.1.1. A red box highlights the 'DNS Proxy' dropdown menu, which is currently set to 'DNS Proxy'. Other options include 'Obtained From ISP', 'UserDefined', and 'None'. The 'Apply' and 'Cancel' buttons are visible at the bottom right of the configuration area.