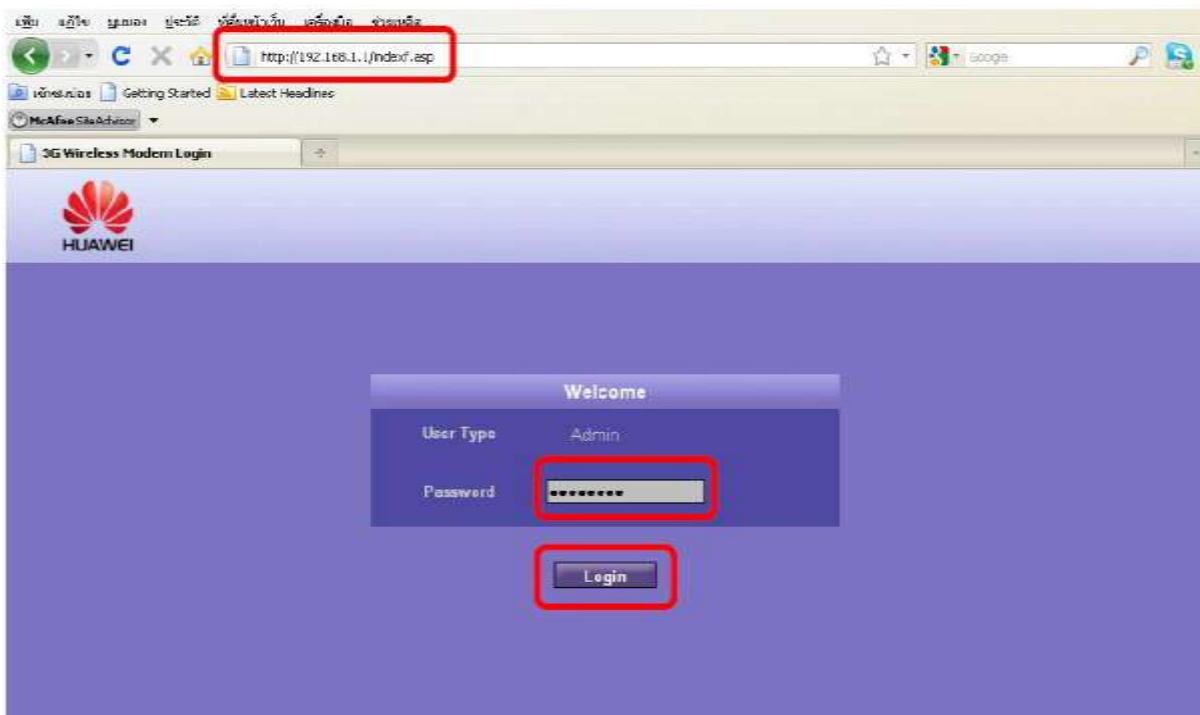


How to choose 2G or 3G network for MiFi Huawei E5836



1. Connect WiFi and 3G MiFi Huawei and open a Browser then type <http://192.168.1.1> The login page appears, enter the password = admin

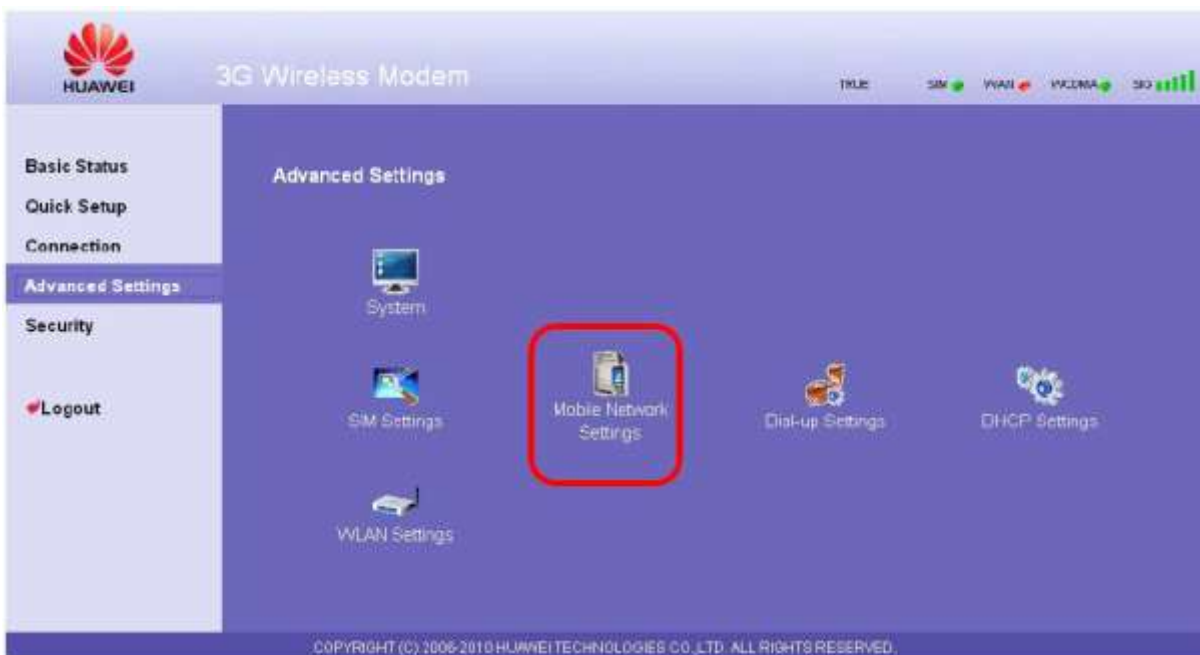




2. Select 'Advance Settings' (notice WAN at the right top, if internet is not connected, it will be red)



3. Select 'Mobile Network Settings'



4. Select 'Network Settings'



5. At 'Preferred Mode' you can choose your preferred network



6. Example: GSM only is selected which means using GPRS or EDGE (2G) network only



GSM Preferred means both 2G and 3G network selected but will connect 2G first

WCDMA Preferred means both 2G and 3G network selected but will connect 3G first

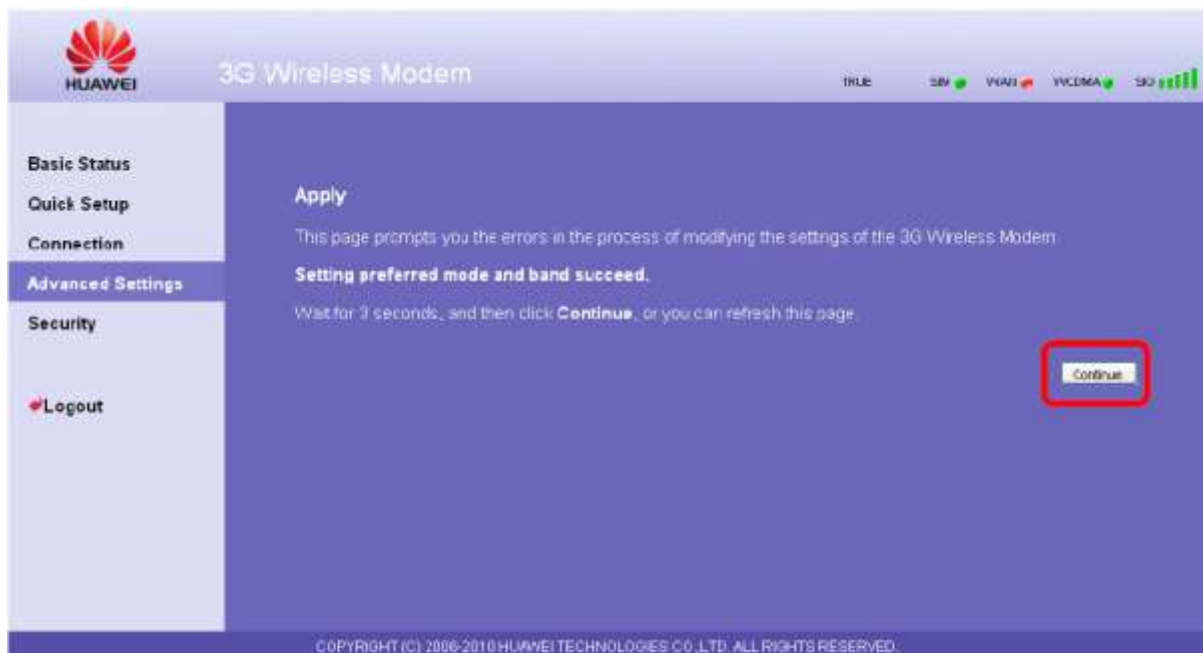
GSM only means using 2G only

WCDMA only means using 3G only

7. Click 'Apply' button



8. Click Continue



9. Return to previous page once finished setting



10. Notice the light on 3G MiF9 Huawei E5836 M letter will be green when connecting 2G and turn blue when connecting 3G

